

CREKS AND HARBOURS OF PORT PHILLIP

A Mariner's Companion and a guide to cruising and fishing

Third edition — *2002.*

by

RICHARD HAWKINS

with

AN INTRODUCTION TO THE BIRD LIFE

by

VAL CURTIS

RICKETTS POINT TO HALF MOON BAY

Plans B 18, 23, 24

Boats should keep a quarter of a mile off-shore along this two mile stretch of rocky coast on which is located the Beaumaris Yacht Club (off-the-beach sailing) and which is a very popular fishing ground.

There is a measured mile marked by transit beacons at Ricketts Point and at Quiet Corner, a headland to the north.

Half Moon Bay is the home of the **Black Rock Yacht Club**.

Facilities: Sailing Club
Launching Ramp (0.3 m)
Jetty (3 m)
Hire Boats
Kiosk

Caution:

1. Access to and from the launching ramp should be navigated with care due to a sand bar in the vicinity.
2. Passage between the wreck of H.M.V.S. "Cerberus" and the jetty is not advised due to the reef which extends 150 metres from the cliff. Boats should pass round the north end of the wreck, on which there is a light (F1.5s.).

Navigation Landmarks:

The northern side of Half Moon Bay is formed by a well known conspicuous red cliff known as Red Bluff which being 34 m above sea level can be seen from well out in the Bay (15 n.m from height of observer's eye at 10 ft).

The Johns Perry lift tower in Sandringham (constructed in 1986) is another useful landmark from Mornington across the bay to Williamstown. Its position is 071°(T) 2,500 metres from Red Bluff and the top of the 74.5 m tower is 110 m above sea level, making it visible during the day to an observer at height of eye 10 ft from 25 n.miles.

HALF MOON BAY TO SANDRINGHAM HARBOUR

Plans B 18, 24, 25

A string of 2 m shoals runs out north west for 750 metres from the rocky promontory of Half Moon Bay. There are three other shoals between Half Moon Bay and Picnic Point: **Anonyma Reef** - this hazard lies in six metres of water and shoals steeply to 1.7 metres with outlying 3m outcrops over three hundred metres in a NW-SE direction. It is marked by a West and an East Cardinal Mark.

Yorkies Reef - an unmarked hazard 0.5 n.m. north east from the Anonyma pile which shoals from 5 to 2 metres over two hundred metres.

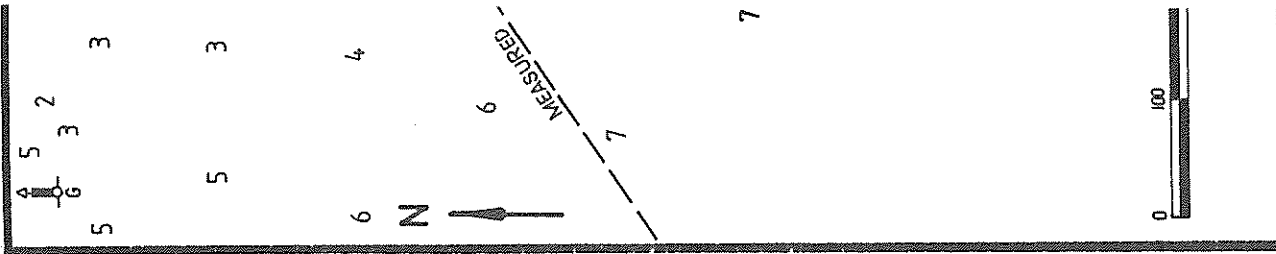
An unnamed oval shallow patch 400 metres offshore 0.5 n.m. north of Half Moon Bay. It shoals from 4 to 1 metre and has depths less than two metres over its 500 metre length which lies along a NW - SE axis.

Craft heading north from the Bay have two choices in order to clear these shoals:

- a course of 317° (True) with the stern of H.M.V.S. "Cerberus" astern and with Newport Chimney (183 m) fine on the starboard bow will pass between Anonyma and Yorkies Reefs in good depth of water (3 - 5 m).
- to make northing as above until Red Bluff is abaft the beam and then stand out into Port Phillip with Red Bluff astern until Anonyma pile can be passed to starboard on a course 340°(T) or greater.

Note: Anonyma Reef and Yorkies Reef lie in the red sector of the low powered light on Sandringham breakwater which is visible for 4 n.m.

Half a mile north of Yorkies Reef is a promontory named Picnic Point which forms the south side of Sandringham anchorage. The shore here is steep-to with the 3 m line 200 metres from the H.W.M. south of the white Trig. beacon and closing to within 100 metres at the root of the breakwater. Four small unlit yellow yacht racing buoys are located one to two miles west of Sandringham (Plan B 18). They are of no navigational significance.



HARBOUR

for 750 metres Bay. There are d Picnic Point: s of water and i outcrops over It is marked by

.m. north east 5 to 2 metres

1 400 metres t shoals from 4 es over its 500

.ve two choices

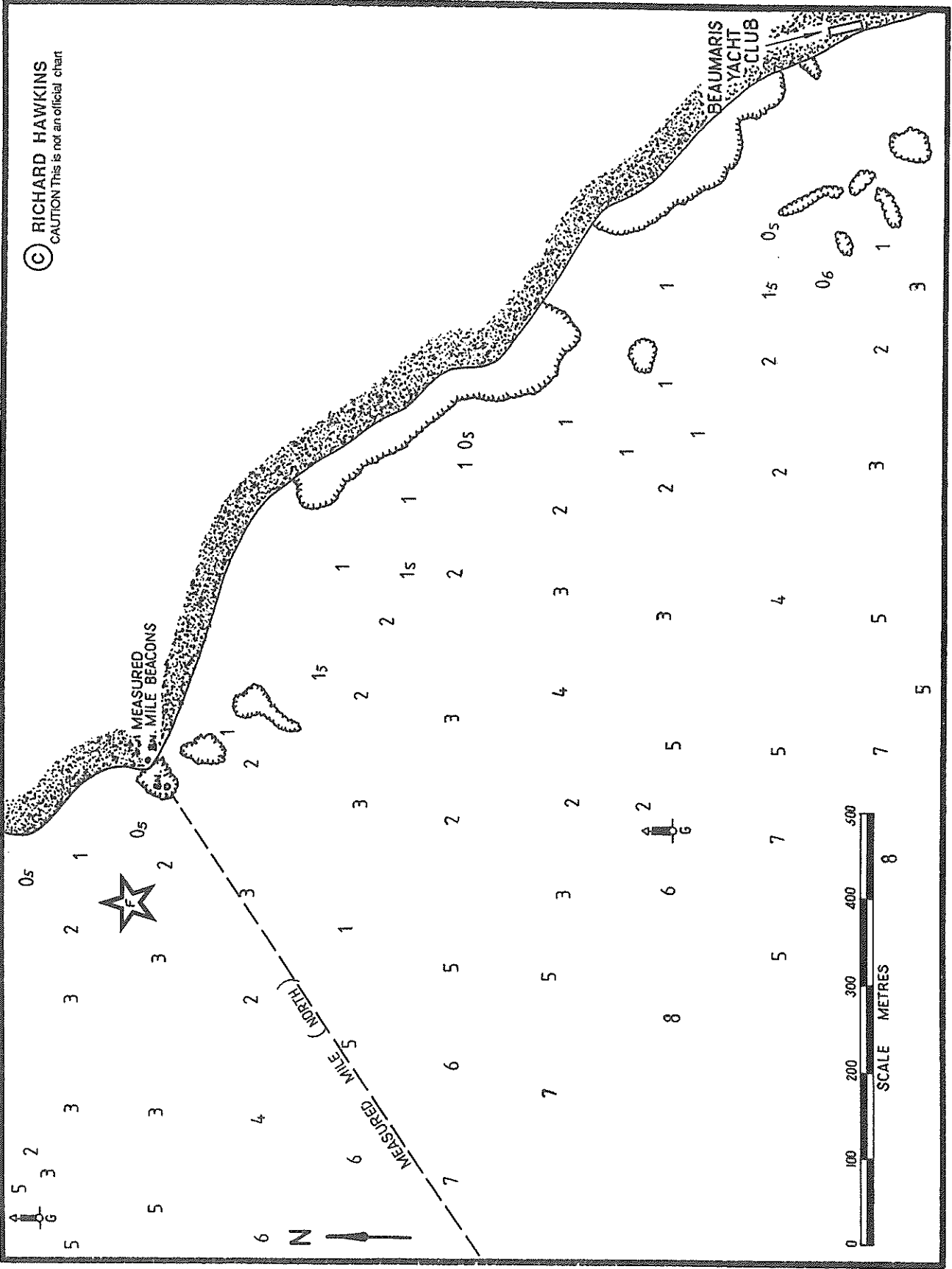
m of H.M.V.S. y (183 m) fine Anonyma and i).

1 Bluff is abaft with Red Bluff starboard on a

n the red sector eakwater which

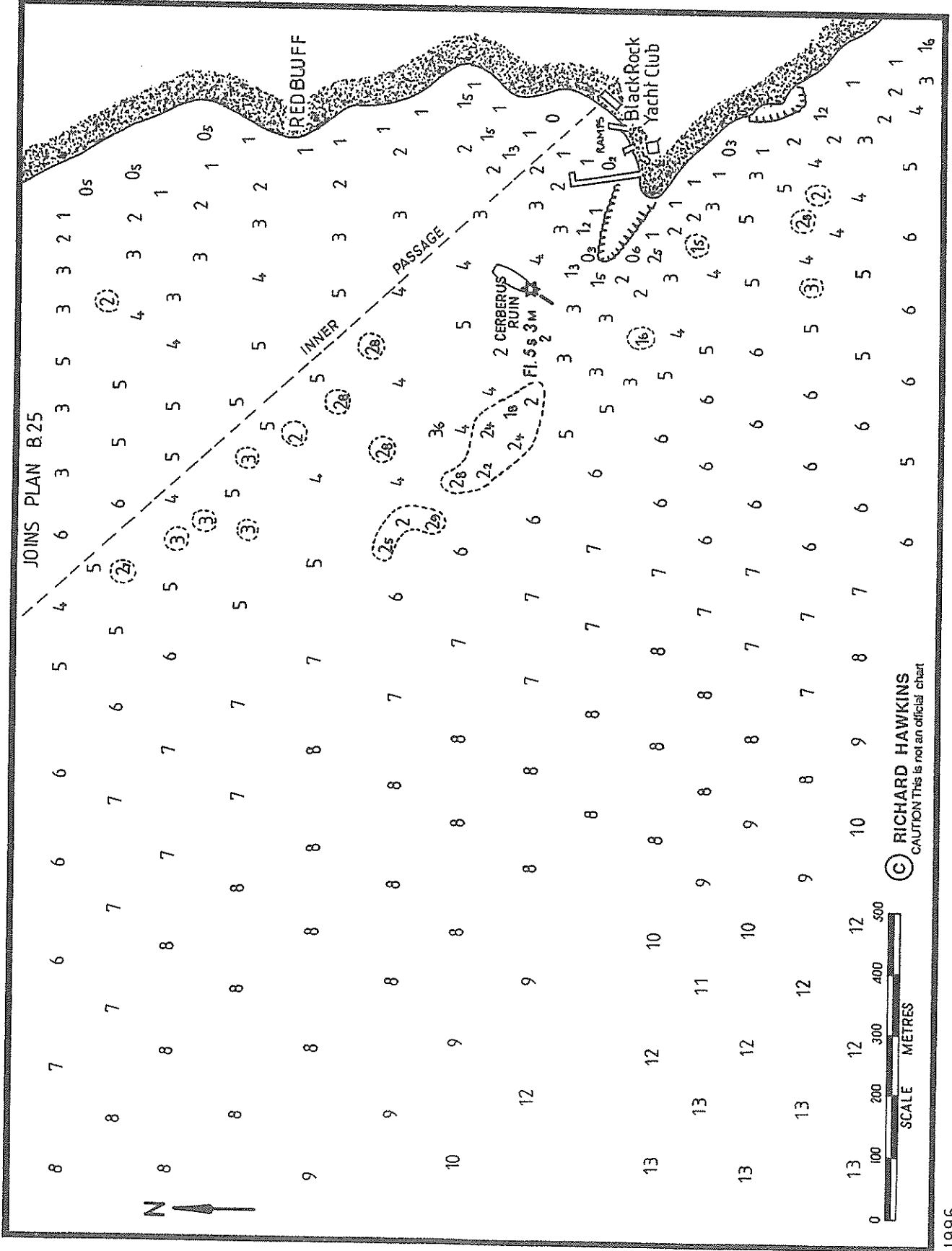
s a promontory south side of eep-to with the th of the white s at the root of ht racing buoys ngham (Plan B

B23 RICKETS POINT TO QUIET CORNER

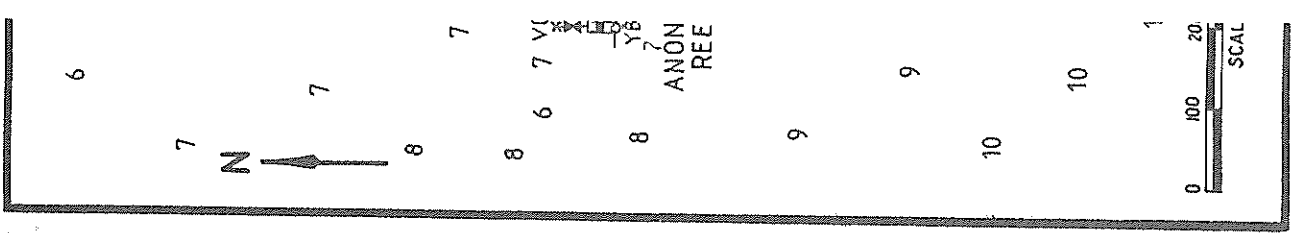


1996

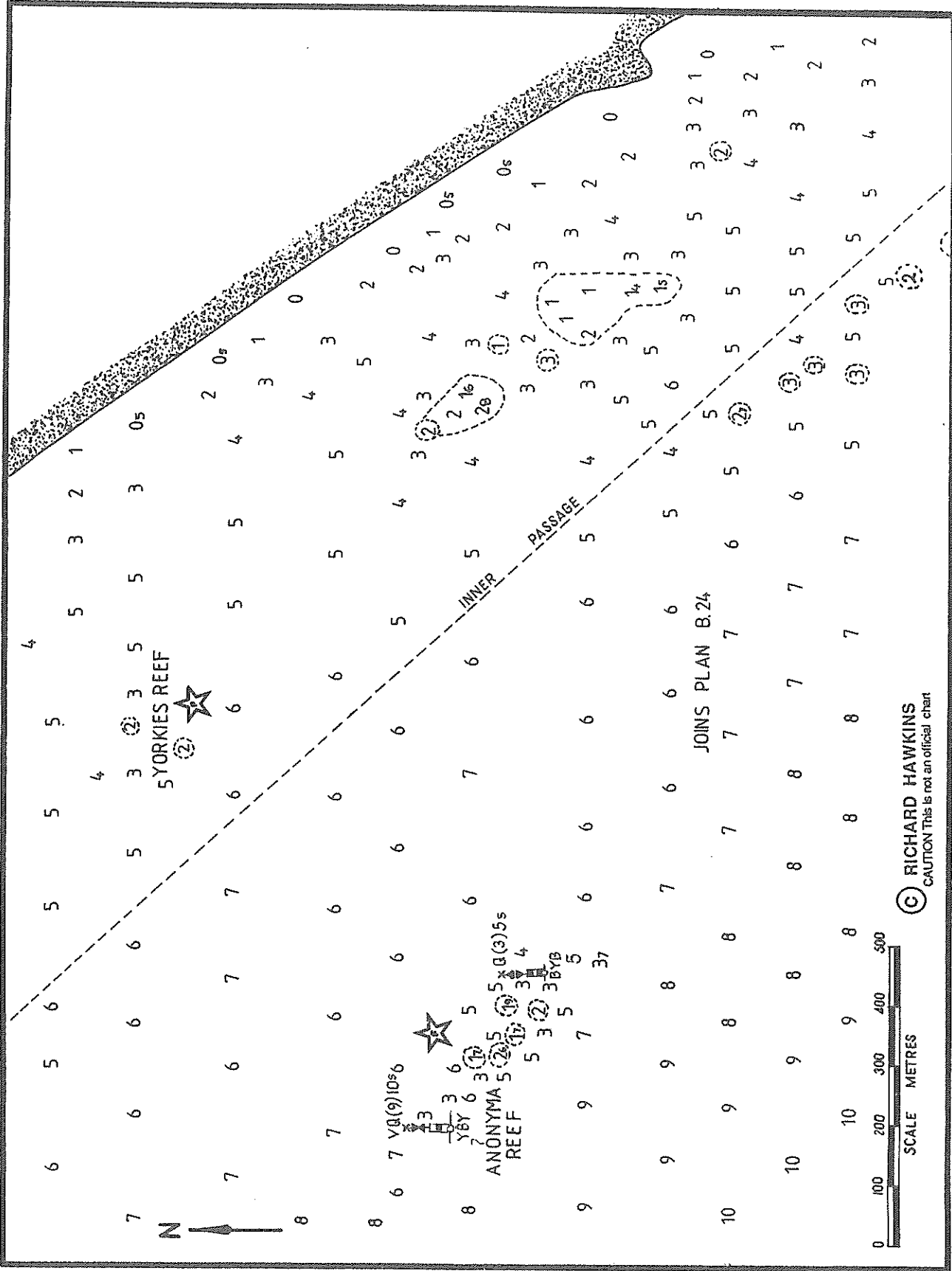
B24 HALF MOON BAY



B25 ANON

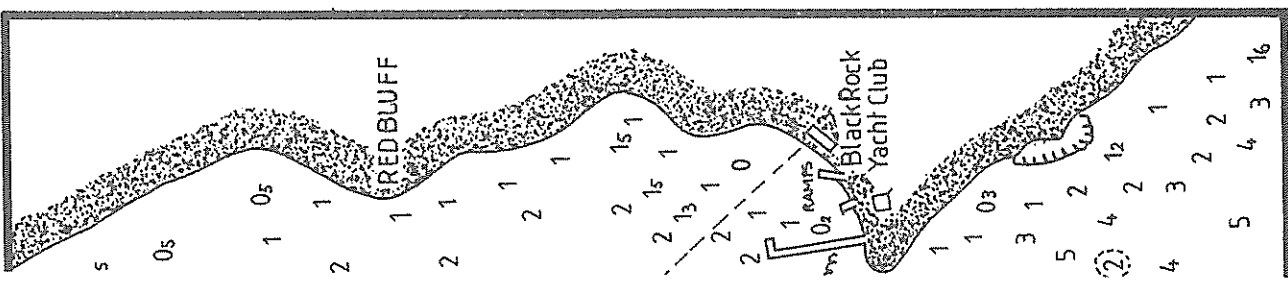


B25 ANONYMA AND YORKIES REEFS



© RICHARD HAWKINS
CAUTION This is not an official chart

1998



SANDRINGHAM

Plans B 18, B 26

Facilities:

- Breakwater Light Fl. (2) G 5s. 4 miles
- Sandringham Yacht Club with:
 - Fuel, Water and Power
 - 40 tonne travel lift
 - Launching Ramp
 - Rigging Crane
 - Dry Storage and 318 Wet Berths
- Hampton Sailing Club
- Public Jetty (2m. at head)
- Life Saving Club
- Hotels
- Shops
- Hospital
- Chandlery
- Restaurants

An artificial rock breakwater extends north west from Picnic Point, providing shelter from southerly and westerly winds. A wave barrier gives protection from northerlies. In the harbour are the piers and mooring pens providing the yacht club berths, and the other facilities listed above.

Within the berthing complex are the remains of earlier attempts to create a sheltered harbour – the wreck of a J-class submarine which served as a breakwater.

Boats should enter round the outside of the wave barrier. Although all the berths are taken up on a permanent basis, the yacht club can usually find a temporary berth at the outer end of the pens for visiting craft. Arrangements should be made before arrival, if possible.

Note:

- Useful leads for approaching Sandringham harbour are the Johns Perry Lift Tower (see Half Moon Bay) and a house with a blue tiled roof on the Esplanade just north of the breakwater.
- The Victorian Headquarters of the Australian Volunteer Coastguard Association is located just above Sandringham Harbour. From this site radar coverage of almost the entire area of Port Phillip is obtained.

B26 SANDRING

© RICHARD
CAUTION THIS IS A

N

35

37

37

39

4

41

41

36

42

39

42

4

41

42

38

43

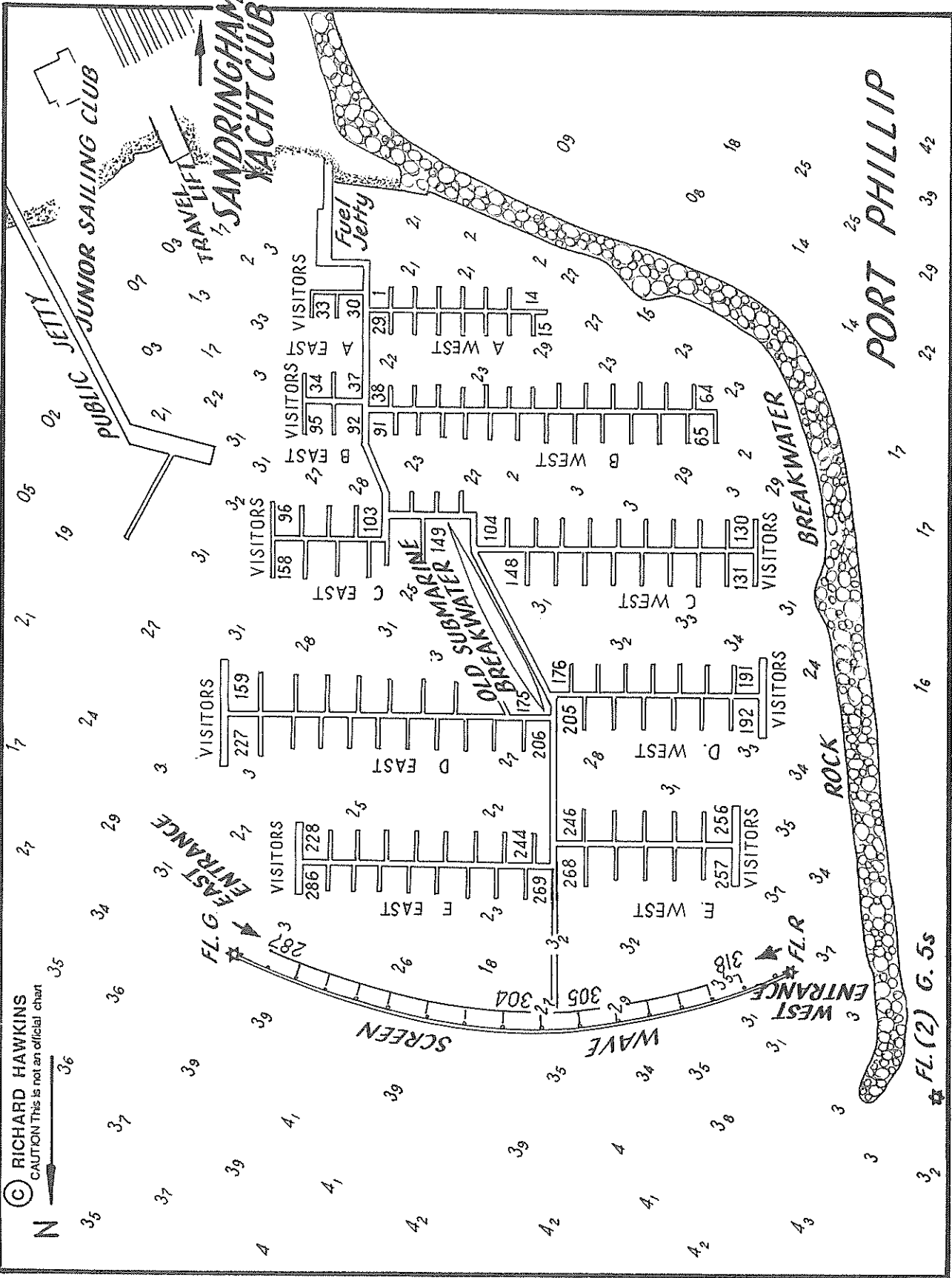
3

3

32

2002

B26 SANDRINGHAM HARBOUR



© RICHARD HAWKINS
CAUTION This is not an official chart

00 Sandringham B'water Lt.

S 37° 56.57'
E 144° 59.48'

2002

SANDRINGHAM TO BRIGHTON

Plans B 18, B 27

The coast runs in a north westerly direction to Green Point when it swings north to Middle Brighton Pier. There is a 1.3 m. shoal 650 metres north of Sandringham breakwater, otherwise there are no off-lying hazards until Green Point.

Between Green Point and Middle Brighton Pier there are two hazards:

1. A small 1.0 m. shoal midway between Green Point and the pier, 400 metres off the Brighton Life Saving Club.
2. Bonnet Rock just south of the Pier which is marked to seaward by an unlit green starboard hand pile.

Three miles offshore from Sandringham is the conspicuous 17 metre high Fawkner Beacon which is the way point for the approach to the Shipping Channel leading to the Port of Melbourne. Its light is visible for 17 miles (theoretically visible from Mornington to Portarlington).

BRIGHTON Plan B 28

- Facilities:**
- Royal Brighton Yacht Club (179 pens)
 - Crane and slipway
 - Shops
 - Hotels and Restaurants
 - Public Launching Ramp 1 km north of the harbour (small boats only)

The Royal Brighton Yacht Club has a new 179 pen marina under construction and due for completion October 2002. Dredging is planned to achieve 3.1 metres. It may be able to accommodate visiting yachts for short stays, but prior arrangements should be made.

BRIGHTON TO HOBSONS BAY

Plans B 27, B 28, B 29, B 30

This stretch of Port Phillip contains the St. Kilda Marina and the Royal Melbourne Yacht Squadron berths, slipway and club premises within the arm of St. Kilda Pier.

Between Point Ormond and St. Kilda Marina are several off-lying rocks which are marked by green piles. Coal Reef (1.5 m) is marked by an IDM 283° 1300 metres from St. Kilda Marina Light. Otherwise the coast is clear of hazards with the 3 m. line running within 400 metres of the H.W.M.

Note:

Between the coast and the Shipping Channel from Brighton to St. Kilda are six small unlit orange or yellow yacht racing buoys and three more closer to St. Kilda Pier. They are of no navigational significance.

