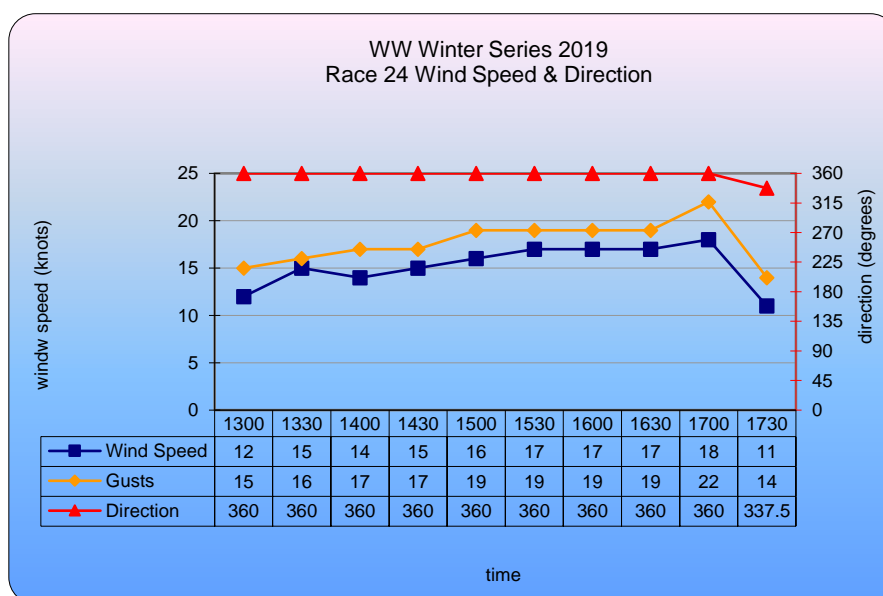


Spring Like Conditions in Winter Wednesday Wonders Winter Series 2019 Race 24 (11 Sep 2019)



There was probably a bit more breeze for this race than many anticipated. Nevertheless, it did settle down early on and although there were occasional gusts it remained a northerly direction that averaged about 15 knots at Fawkner Beacon for the afternoon. It was enough to see all 30 yachts around the 10.6 nautical mile course 40. Although this course had been selected twice before, this is the first time the course was sailed in its entirety.



A median start time of 39 seconds (the highest this series) showed yet again that finding the start line in a northerly is more difficult than judging the start in a southerly. There are exceptions. Both ARCH DE TRIOMPHE (Alistair Murray) and UPBEAT (Peter Dunne) tied for Start of the Day both crossing the start line on their 38 minute handicaps. STAMPEDE (Christopher Gendala) was first across the finish line but was penalised by not meeting the crew sign on requirement. ROLLER COASTER (Geoffrey Simpson) claimed her first win of the series. BABYDOLL (Brendan Kruger) was next across the finish line to receive her first glass of the series. In 3rd place was WHITE POINTER (Tom Raft) who becomes the first yacht to have 4 podium finishes this winter. Although STAMPEDE did not sign on her crew she still sailed the course in the fastest time – the 4th time this series.

WICKED (Mike Welsh) continues to lead the aggregate followed by FOGGY DEW (Joe O'Grady & Frank Hilliard) in second place with ARCH DE TRIOMPHE moving back into 3rd spot after a week in 5th position.



ROLLER COASTER has completed 8 races this series and recorded 3 top ten finishes including 2 podium finishes. She started this race from 7th place 76 seconds late for her 26 minute handicap. She made her slowest start of the series for her lowest handicap. She sailed the first 4 legs of the course in 1:19:32 and led the fleet around SYC 4. It took 46 minutes 34 seconds for ROLLER COASTER to complete the last 3 legs of the course and she crossed the finish line at 16:03:22 – 2 minutes 20 seconds ahead of BABYDOLL. She moves up from 35th to 33rd position in the aggregate.

BABYDOLL has 6 top ten finishes from her 14 races. She was the 15th yacht to start this race 25 seconds late for a 37 minute handicap. She sailed the first 4 legs of the course particularly well and was in 5th place at the first rounding of SYC 4 only 2 minutes 39 seconds behind the leader. She sailed the last 3 legs of the course in 46 minutes 15 seconds and crossed the finish line at 16:05:41. BABYDOLL moves up from 14th to 10th place in the aggregate her highest place so far this series.

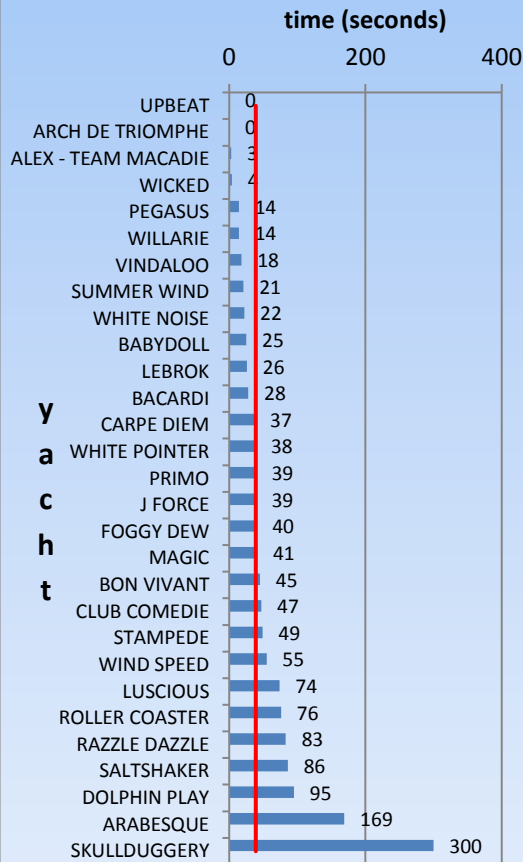


During the last 6 races WHITE POINTER's handicap as increased from 29 to 38 minutes. Even so she has accumulated 4 podium finishes (3 firsts and a third). She started from 18th place 38 seconds late for her handicap. By the first rounding of SYC 4 she was in 10th place 26 seconds



behind UPBEAT and 1 minute 59 seconds ahead of ARCH DE TRIOMPHE both of whom had 38 minute handicaps. WHITE POINTER sailed the last 3 legs of the course in 44 minutes 39 to finish 4 places ahead of UPBEAT and 5 ahead of ARCH DE TRIOMPHE. WHITE POINTER is now 18th in the aggregate her best place of the series.

WW Winter Series 2019 Race 24 Start of the Day

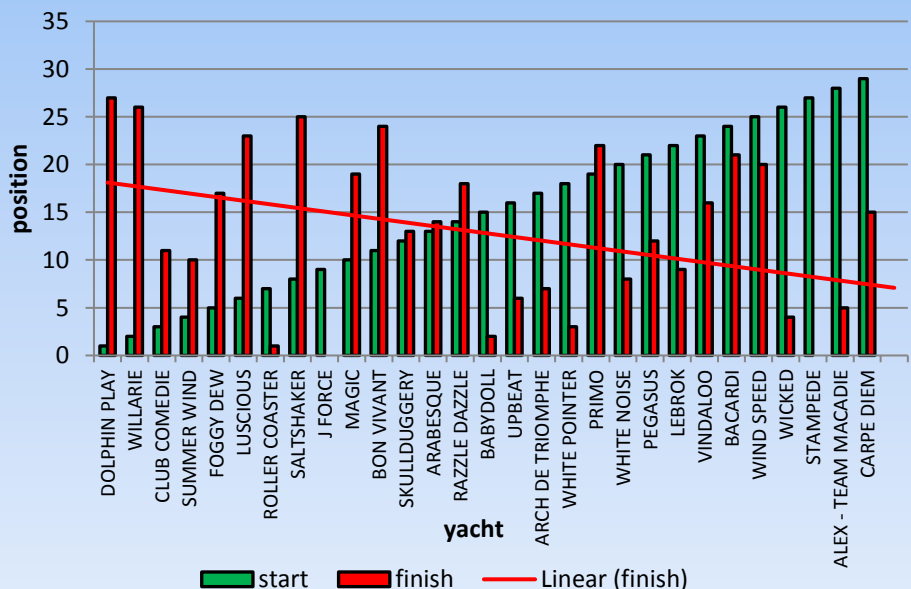


Only 4 yachts started within 10 seconds or less of their handicaps whilst 7 yachts started more than a minute late for theirs. It was the 2nd time UPBEAT had won the start. ARCH DE TRIOMPHE as now won start of the day 5 times. This was her best start to date.

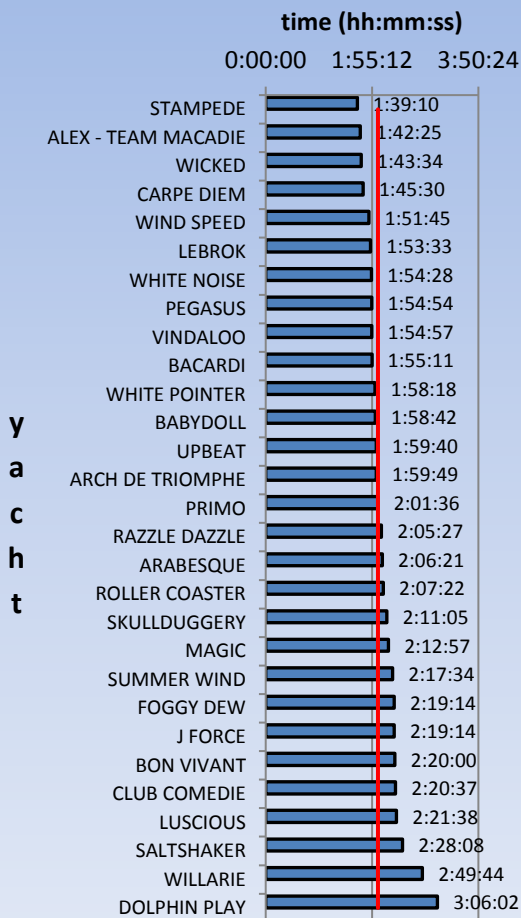


It was a good result for the yachts that started mid fleet with 5 of them among the first 5 to finish. The fleet started 54 minutes 2 seconds apart but this gap was only 15 minutes at the first rounding of SYC 4. It increased to become 32 minutes 40 seconds at the finish line.

WW Winter Series 2019 Race 24 Position at Start & Finish



WW Winter Series 2019 Race 24 Elapsed Time



With a time of 1:39:10 STAMPEDE was the fastest yacht around the course. She was 3 minutes 15 seconds faster than ALEX TEAM MACADIE and 4 minutes 24 seconds faster than WICKED. The median elapsed time for the race was 2:01:36.



(Left) ANDANTE 1 had a "trial start" dipped over the line about 10 minutes too soon and was judged DNS.



(Right)
SKULLDUGGERY
started 1 second too
soon and was penalised
5 minutes.

SUMMER WIND
(left) had her 3rd top
ten finish in 9 races.



ALEX TEAM MACADIE (below) was last to start & finished 5th in her first race of the series.



(Below & right) Both sides of LUSCIOUS.



SALTSHAKER (left) completes her 18th race of the series whilst MAGIC (right) completes her 16th.





Something to ponder.



DOLPHIN PLAY (left) was first to start but last to finish.
(Below) WICKED finished 4th & leads the winter aggregate.



Photos
By Bruce Parry
&
Graham Furness

*Graham
Furness*