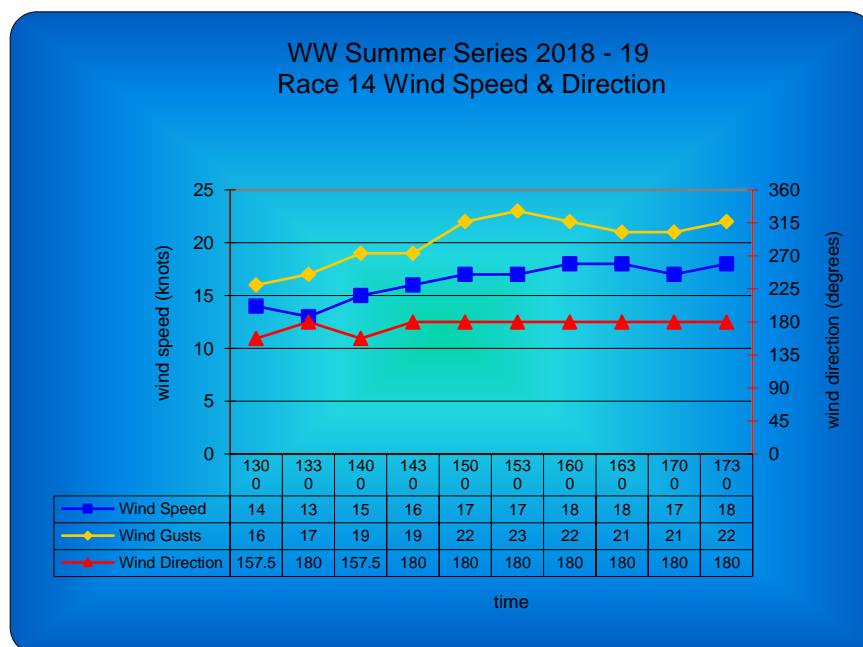


## Closest Finish of the Series Wednesday Wonders Summer Series 2018-19 (9 Jan 2019)



With all 31 yachts finishing the race within 13 minutes of each other this was the closest finish of the series. On average a yacht crossed the finish line every 25 seconds. Not only was there another new winner for start of the day but there were also two new podium finishers. Helped by a southerly breeze that averaged about 16 knots for the afternoon (gust to 23 knots), and despite choppy seas, the fleet sailed around the 9.8 nautical mile course 12 in the second fastest elapsed time of the series.



On a day that saw the best median start time of series FOGGY DEW (Joe O'Grady) won start of the Day with a time of 1 second. SURI (Rick Blanck) became the second yacht to record 2 wins in the series when she was first across the finish line. STAMPEDE (Christopher Gendala) gained her first podium finish by finishing in 2<sup>nd</sup> place. Also recording her first podium finish of the series was WHITE POINTER (Tom Raft) who finished 3<sup>rd</sup>. For the second successive week and the 6<sup>th</sup> time this series ESPRIT (Garry Anderson) sailed the course in the fastest elapsed time.

PIPPA (Jeffrey Woolhouse) not only remains at the top of the aggregate for the third successive week she also leads the contest for the Shebessa Shield. Second in the aggregate is BON VIVANT (Russell Keays) with SURI (RICK BLANCK) 3<sup>rd</sup>. DESPITE finishing 21<sup>st</sup> in this race CASSANDRA of MELBOURNE (Bob Reeves) is the current leader in the contest for the Noelle Coram Trophy.



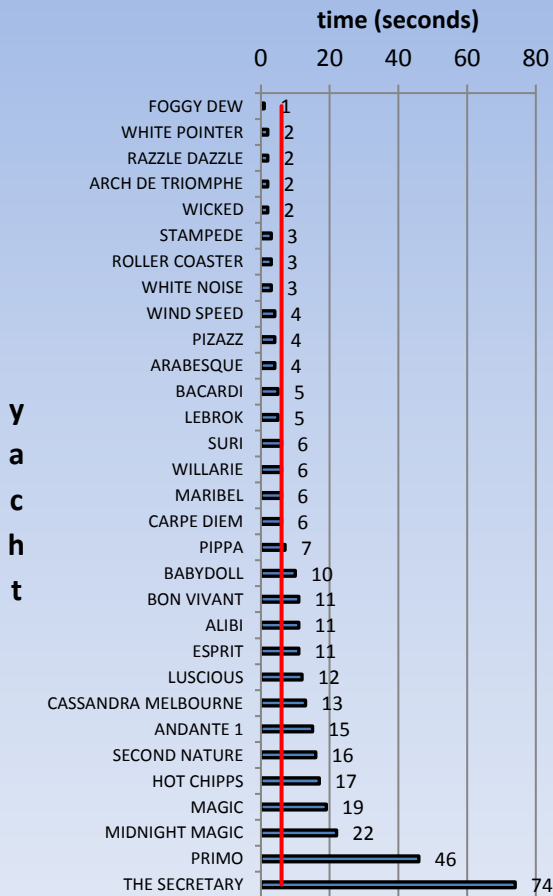
SURI moved up from 9<sup>th</sup> into 3<sup>rd</sup> place in the summer aggregate – her best position in the aggregate so far. She has completed 10 races and recorded 4 top ten finishes including two 1<sup>st</sup> places. SURI started this race from 9<sup>th</sup> place 6 seconds late for her 25 minute handicap – the highest this series. She sailed the first 4 legs of the course in 1:11:47 and moved up into 5<sup>th</sup> place 4 minutes 13 seconds behind the leader. SURI completed the final three legs of the race in 39 minutes 7 seconds to be first across the finish line at 15:46:00. She had started the race 1 minute 58 seconds ahead of PIZAZZ (P Martyn & R Kemp) but sailed faster to finish 5 minutes 39 seconds and 12 places ahead.

STAMPEDE has completed six races this summer and before this race her average finish position was 32<sup>nd</sup>. She had a 52 minute handicap at the start of the series but this was reduced 49 minutes for this race. She started the race from 28<sup>th</sup> place only 3 seconds late for her handicap. STAMPEDE was 19<sup>th</sup> at the first rounding of SYC 4 still 11 minutes 59 seconds behind the leader. She completed the last three legs of the course in 33 minutes 34 seconds to cross the finish line at 15:48:13 – 2 minutes 13 seconds behind the winner. STAMPEDE recorded the 2<sup>nd</sup> fastest elapsed time of the race and a “personal” best for the series. Even though she sailed well in this race she only moved up from 46<sup>th</sup> to 45<sup>th</sup> in the aggregate.



This was the first podium finish for WHITE POINTER in 10 races. She was one of two yachts in this race with a 34 minute handicap and had her best start of the series – only 2 seconds late from 16<sup>th</sup> place. She made only slow progress during the first 4 legs of the race passing SYC 4 for the first time in 13<sup>th</sup> position. She sailed the last 3 legs of the course in 37 minutes 40 seconds and crossed the finish line at 15:48:20 only 7 seconds behind STAMPEDE. White POINTER sailed the course 3 minutes 35 seconds faster than SECOND NATURE (Paul Mentiplay) the other yacht with a 34 minute handicap. WHITE POINTER moved up from 30<sup>th</sup> to 19<sup>th</sup> in the aggregate and is currently 8<sup>th</sup> in the contest for the SHEBESSA SHIELD.

## WW Summer Series 2018-19 Race 14 Start of the Day

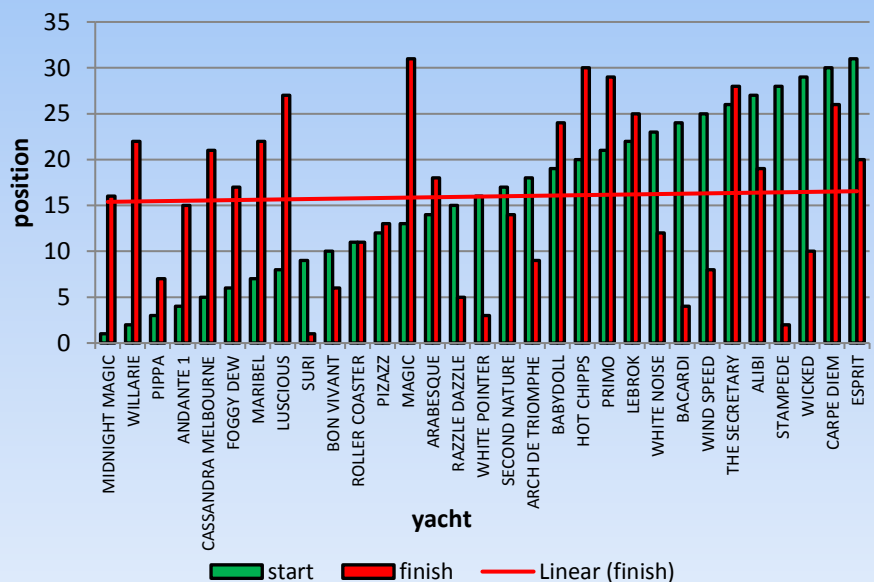


The median start time was 6 seconds the best of the series. FOGGY DEW excelled herself by winning start of the day with a time of one second. Her average start time for the series (12 races) is a little over 20 seconds. Eight yachts recorded their best start of the series. They were: BACARDI, FOGGY DEW, RAZZLE DAZZLE, ROLLER COASTER, STAMPEDE, WHITE POINTER, WICKED and WIND SPEED.



For the second successive week there was a tie. It was between WILLARIE and MARIBEL who both crossed the finish line at 15:53:56. There was an even distribution of early, mid fleet and late starters among the early finishers in the closest finish of the series so far. The 31 starters were 51 minutes 49 seconds apart at the start, 18 minutes 30 seconds apart at SYC 4 and finished within 13 minutes of each other.

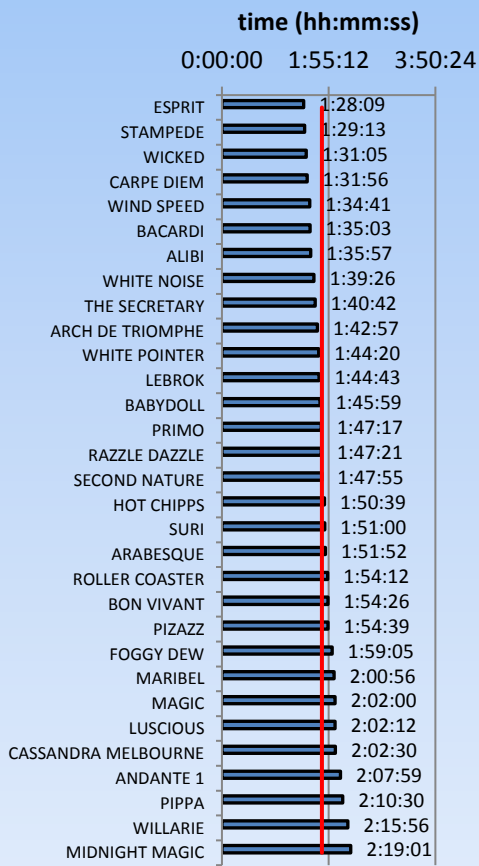
## WW Summer Series 2018-19 Race 14 Position at Start & Finish





## WW Summer Series 2018-19 Race 14 Elapsed Time

y  
a  
c  
h  
t



With a median elapsed time of 1:47:55 this was the second fastest race this summer. There was a range of 50 minutes 52 seconds in elapsed times compared to 52 minutes range of handicaps. As mentioned, ESPRIT was the fastest, 64 seconds faster than STAMPEDE.



PIZAZZ & ROLLER COASTER stayed close throughout the race. Started 2 seconds apart were 97 seconds apart at SYC 4 & finished 27 seconds apart.





(Above left) PIPPA finished 7<sup>th</sup>, leads the aggregate & the contest for the Shebessa Shield. (Above right) WILLARIE finished 22<sup>nd</sup> but holds on to 14<sup>th</sup> place in the aggregate.

SECOND NATURE (left) & MAGIC (right) - a couple of well heeled yachts



Both BACARDI (left) & RAZZLE DAZZLE right recorded their best result of the series.







A bit of water over the decks of both ARABESQUE & STAMPEDE.



STARBOARD!

MARIBEL (below left) finished 3 seconds ahead of BABYDOLL (below right).



(Right) ARCH DE TRIOMPHE equalled her best start of the series and is a serious contender for the Misty Blue Trophy.



(Below) CASSANDRA leads the race for the Noelle Coram Trophy.



BON VIVANT takes the lead of a small group around SYC 1.



Photos  
By  
Bruce Parry  
&  
Graham Furness

Windward  
Buoy