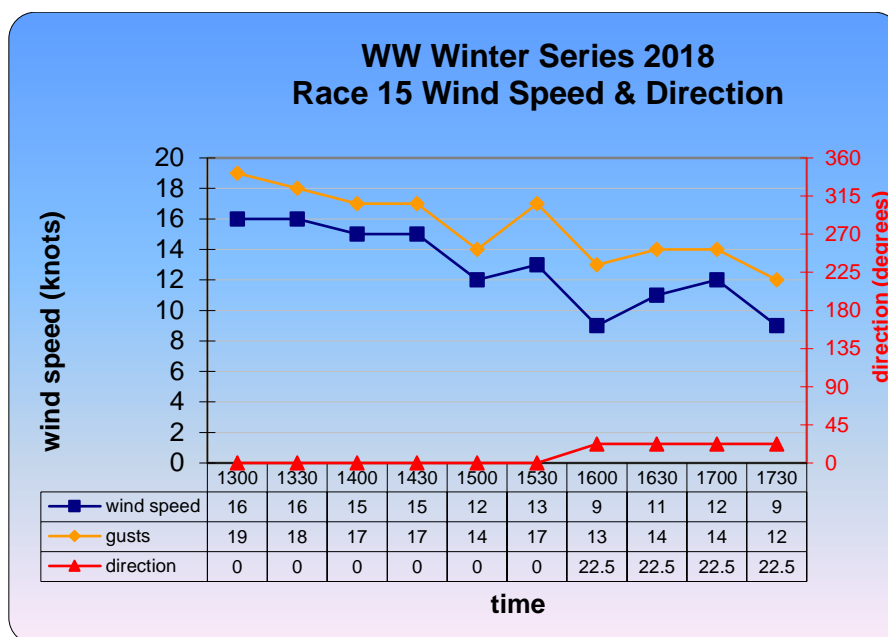


Wednesday Sailing Returns Wednesday Wonders Series 2018 Race 15 (11 Jul 2018)



After 2 abandoned races WW's was back with gusto on the coldest day of the year. A fleet of 38 yachts took part in a fascinating race around the 9.8 nautical mile course 12. Rather than the usual start to windward, the first leg of this race was downwind – a long run to SYC 5. The north to north easterly breeze eased as the race progressed and averaged about 13 knots for the afternoon so this was not the quickest race of the series.



There was a tie for Start of the Day with both ARCH DE TRIOMPHE (Murray/Davis/Taylor) and PIPPA (Jeffrey Woolhouse) starting only 2 seconds late for their respective handicaps. It proved a good race for three Beneteau First yachts. Skipped by the 2017 Stirrer of the Year and co-handicapper the Beneteau First 35 WHITE NOISE (Daniel Edwards) made this her first win. In 2nd place, and collecting her 2nd podium finish was the Beneteau First 40 BRANNEW (Clive Sondheim). Third and recording her 3rd podium finish of the series was another Beneteau First 40, WICKED (Mike Welsh). With a time of 1:49:08 it was WICKED that sailed the course in the fastest elapsed time.

Not only did WHITE NOISE and BRANNEW record the best result of the series so far but so did CONQUEST (Paul Jacka), LEBROK (Theo Korbel) and PATRIOT (Jason Close). They finished 13th, 5th and 9th respectively.

It's a long wait to the top if you want to lead the WW series aggregate. After staying in the aggregate top ten from the start of the series PHOENIX (Alex Tseberg) finally made it to the top after finishing in 4th place. CAFE RACER (Alan Clapham) moves into 2nd place following her 7th place whilst WHITE POINTER (Tom Raft) slips from 2nd into 3rd place.



WHITE NOISE is one of six yachts that has completed all 13 races this series. On average she has finished mid fleet but still has two 4th places and now a win to her credit. She started the series with a 44 minute handicap but she started this race from 29th place 4 seconds late for her 40 minute handicap. She sailed the first 4 legs of the course in 1:14:31 and had moved into 10th position at the first rounding of SYC 4. WHITE NOISE started 2 seconds after ARCH DE TRIOMPHE but was already 10 places and 5 minutes 12 seconds ahead. She went on to sail the last 3 legs of the course in 42

minutes 27 seconds and was first across the finish line at 16:07:02. This helped WHITE NOISE from 22nd to 11th in the aggregate – her best place of the series so far.

BRANNEW's 2nd place helped her from 26th to 18th in the aggregate. Like WHITE NOISE she has completed all 13 races and, on average, has been finishing mid fleet. Before this race she had only one top ten finish. BRANNEW started the series with a 49 minute handicap but was allocated a 47 minute handicap for this race. She had a good start from 34th place, only 5 seconds late for her handicap. By SYC 4 she had moved into 17th place still 13 minutes 4 seconds behind the leader. She sailed the last 3 legs of the course in 42 minutes 6 seconds and crossed the finish line at 16:09:27 – 2 minutes 54 seconds behind the winner. BRANNEW sailed the entire course in 1:52:56 the 3rd fastest elapsed time of the race.



For her 12 races WICKED has had a handicap ranging from 54 to 49 minutes. She started this race from 36th place, 10 seconds late for her 51 minute handicap. At the completion of the first 4

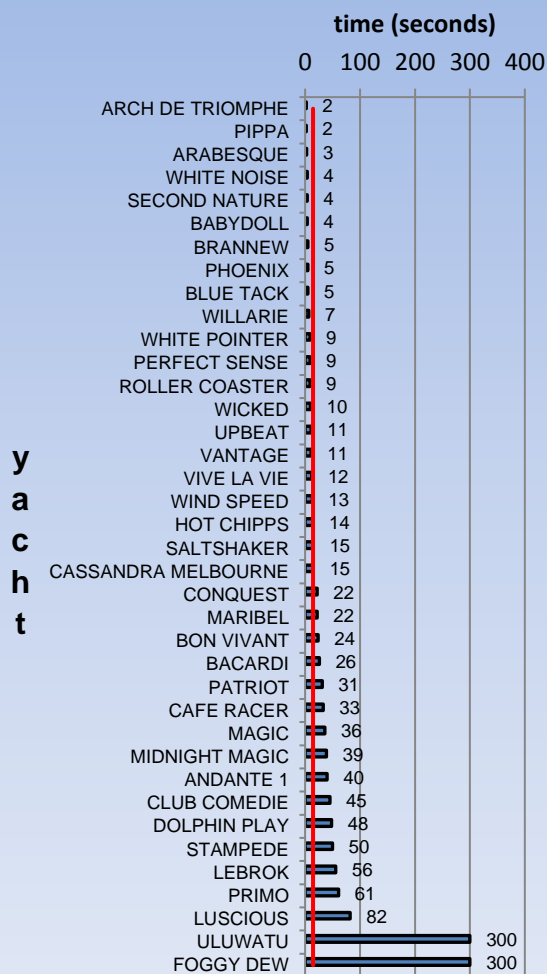


legs of the race she was in 18th place, 1 place and 1 minute 41 seconds behind BRANNEW. WICKED sailed the last three legs of the race 60 seconds faster than BRANNEW to finish only 12 seconds behind. She had completed the course in 1:49:08 the fastest elapsed time of the race and crossed the finish line at 16:10:08. Of the two Beneteau First 40's in the series WICKED has been able to keep ahead of BRANNEW in the aggregate. She moves from 16th into 7th place following her 3rd place in this race.

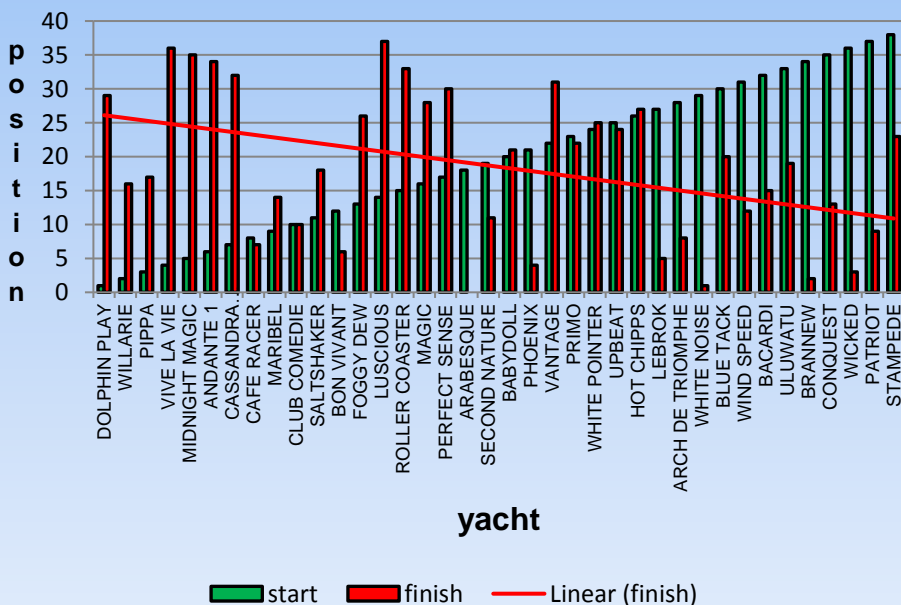
This was the 3rd tie for Start of the Day this series. It was the first win for PIPPA (Jeffrey Woolhouse) and the second for ARCH DE TRIOMPHE. The median start time was 14.5 seconds (red line) with 2 yachts starting more than 60 seconds late and a further 2 penalised for starting too soon.



WW Winter Series 2018 Race 15 Start of the Day



WW Winter Series 2018 Race 15 Position at Start & Finish



The late starters finished well in this race with 7 of them among the first third of the fleet to finish. The 38 yachts started 56 minutes and 2 seconds apart. By the first rounding of SYC 4 there was a gap of 22 minutes 57 seconds which had increased by the end of the race to 33 minutes 43 seconds. Only 1 second separated WIND SPEED and CONQUEST at the finish line.

Race 3 of the Century Class resulted in a win for BON VIVANT with the two Tritons WILLARIE and PIPPA finishing 2nd and 3rd. The three races have resulted in three different winners with SALTSHAKER wining race 1 and DOLPHIN PLAY race 2.

Century Class Winter Series 2018 Race 3						
POSITION	YACHT	DESIGN	SKIPPER	ELAPSED	FINISH	HANDICAP
1	BON VIVANT	S80	Russell Keays	2:18:35	16:12:35	0:24:00
2	WILLARIE	Triton 24	Graeme Kaufman	2:40:16	16:16:16	0:06:00
3	PIPPA	Triton 24	Jeffrey Woolhouse	2:37:33	16:16:33	0:09:00
4	SALTSHAKER	Jarkan 925	Ken Gayler	2:25:49	16:16:49	0:21:00
5	MAGIC	S & S 39	Phil Spry-Bailey	2:24:03	16:23:03	0:29:00
6	DOLPHIN PLAY	Triton	John Brennan	2:56:30	16:23:30	-0:03:00
7	CASSANDRA MELBOURNE	Mottle 33	Bob Reeves	2:36:26	16:24:26	0:18:00
8	MIDNIGHT MAGIC	East Coast 31	Bernadette Moore	2:50:58	16:30:58	0:10:00

By The Way

The table below shows the aggregate positions of the yachts that make up the aggregate top ten on completion of race 15. Two yachts (PHOENIX and PIPPA) have not left the aggregate top ten since the start of the series. In contrast SUMMER WIND, WILLARIE and BON VIVANT started the series well outside the top ten and have improved their positions as the series progressed. WHITE POINTER and CAFE RACER have also improved their aggregate positions as the series progressed but WICKED, ALIBI and WIND SPEED have had more fluctuating fortunes.



WW Winter Series Aggregate Top Ten															
YACHT	RACE NUMBER														
	1	2	3	4	5	6	7	8	9	10	11	12	13	14	15
PHOENIX	4	3	2	2	4	7	3	3	3	6	7	6	6	6	1
CAFE RACER	10	15	8	10	14	16	11	2	6	1	5	5	5	5	2
WHITE POINTER	12	12	11	17	12	9	7	11	4	7	3	2	2	2	3
PIPPA	1	2	3	3	10	3	4	1	1	2	1	1	1	1	4
BON VIVANT	23	33	22	21	25	31	20	20	24	17	10	8	8	8	5
WILLARIE	31	38	30	24	26	20	9	8	5	4	4	4	4	4	6
WICKED	24	14	19	7	2	2	5	9	15	9	15	16	16	16	7
SUMMER WIND		42	46	46	46	39	35	22	11	8	2	3	3	3	8
ALIBI	9	13	14	11	5	8	8	12	9	11	12	10	10	10	9
WIND SPEED	13	19	16	16	7	11	12	14	13	14	9	15	15	15	10



UPBEAT crew find time to relax



MIDNIGHT MAGIC & MAGIC unable to pull the rabbit from the hat this week.



Rounding marks during peak hour.



ARABESQUE (left) had a good start but retired from the race.

Finishing 34th wasn't the best result for ANDANTE (right).





CLUB COMEDIE (left) started 10th and finished 10th.

It wasn't such a bad day for WIND SPEED (below) or BACARDI (right) who finished 12th and 15th respectively.



PATRIOT recorded the second fastest elapsed time in her second WW race of the series.

Photos
By
Bruce Parry
Ian Whitbread
Graham Furness

windward-buoy@outlook.com

Windward
Buoy