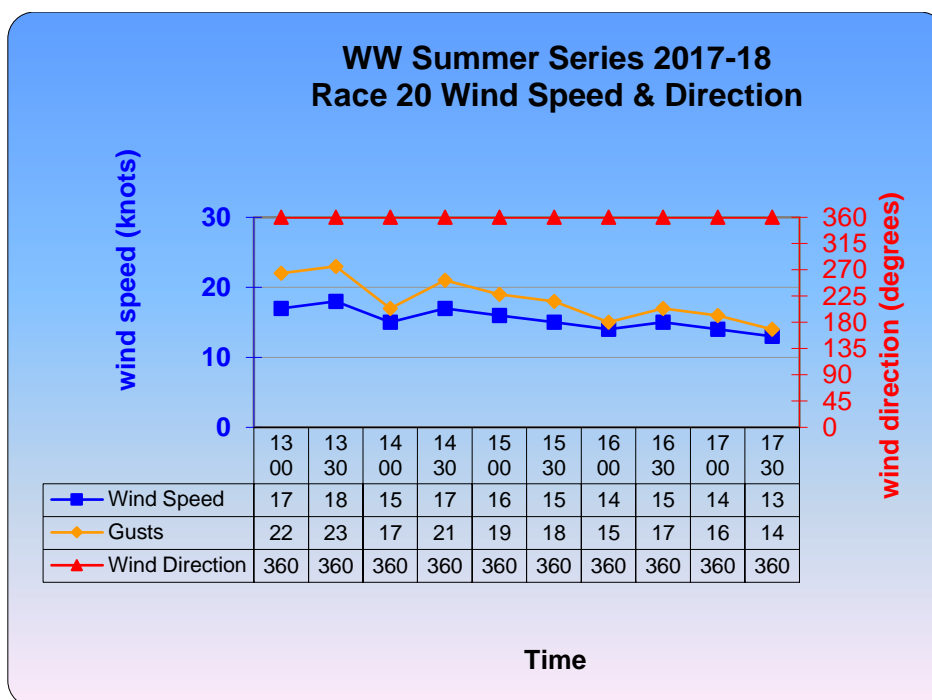


# ‘Many are called but few are chosen’ Wednesday Wonders Race 20 Summer series 2017-18

21/2/2018



Vindaloo was 3 places ahead at the start; at halfway she was 6 secs in front, at the finish White Noise was 8 places in front



**First**      **Vive La Vie Sm491**

**Handicap:** Zero, same as last race

**Start time:** 2:11 late.. **First time past number 4** was first by 6:42mins. Crossed the finish line at 15:34:17, 6min ahead of second place.

**Second**      **Foggy Dew Sm 32**

**Handicap:** A 7 minute handicap reduction =16mins

Start time + 12 secs. First time past No 4 - 5<sup>th</sup> place, about 11mins off first. Finished 1 min in front of 3<sup>rd</sup>

**Third**      **Second Nature Sm6161**

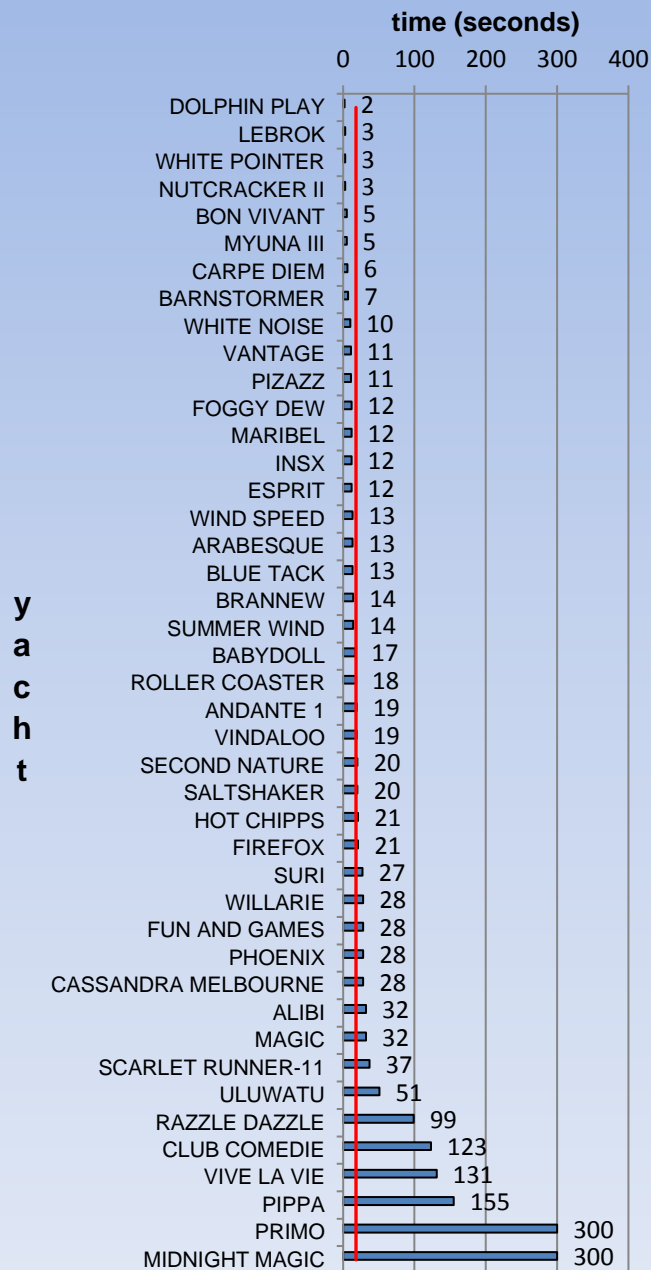
**Handicap 30 mins.** A 7 minute handicap reduction

Start 20 seconds late. At half way 10<sup>th</sup> 10mins off the leader.

## **Dotty Bits for Race 20**

- Handicaps based upon wind speed of 10 to 15 knots;
- Observations at Fawkner indicate northerly breeze of 15 knots for the afternoon;
- In general, the breeze decreased as the afternoon wore on;
- 43 yachts start and finish the 6 leg, 9.9 nautical mile course 26;
- DOLPHIN PLAY becomes 13<sup>th</sup> different yacht to win Start of the Day;
- Median start time – 18 seconds;
- Fleet stated 68:01 minutes apart and finished 32 minutes 29 seconds apart;
- VIVA La VIE becomes 16<sup>th</sup> different yacht to win a race;
- Winning margin of 6 minutes 42 seconds the second highest of the series;
- FOGGY DEW records her first podium and 6<sup>th</sup> top ten finish when she finishes in 2<sup>nd</sup> place;
- SECOND NATURE records her second 3<sup>rd</sup> place and 7<sup>th</sup> top ten finish of the series;
- Both FOGGY DEW & SECOND NATURE received a 7 minute handicap reduction for this race; Neither have made frequent podium finishes but they both feature strongly in the top ten.
- ULUWATU (26<sup>th</sup>) has her best place this series;
- SCARLET RUNNER-II completes her first race of the series in 3<sup>rd</sup> fastest elapsed time;
- Closest finish was 2 seconds between PHOENIX and MYUNA III with INSX and FIREFOX separated by the same margin;
- NUTCRACKER II (1:49:27) records the fastest time of the race for 13<sup>th</sup> time;
- Average elapsed time for the race 131.63 minutes;
- FUN & GAMES (2:30:41) sailed the course 1 second faster than LEBROK (2:30:41);
- The same margin separated VANTAGE (2:10:22) from PRIMO (2:10:23) but had a penalty added
- WHITE POINTER continues to lead the aggregate; The yellow flag won't come undone
- FOGGY DEW re enters aggregate top ten as does ROLLER COASTER;
- INSX and RAZZLE DAZZLE slip out of the aggregate top ten;

## WW Summer Series 2017-18 Race 20 Start of the Day



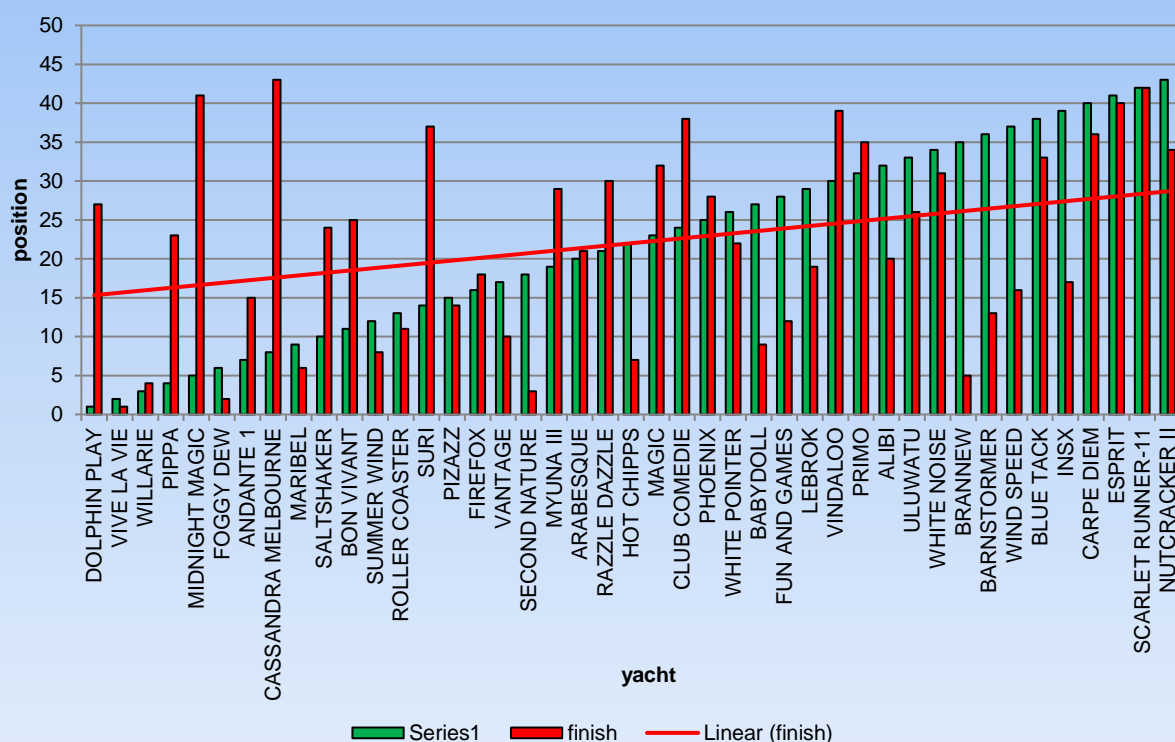
### Start of the day: Dolphin Play

Best race yet

Dolphin Play was sitting in the top 20 until one bad tack approaching the finish mark placed her in a melee of yachts and she dropped to 27<sup>th</sup>. On the first time past Number 4 she was in third place and only on the final leg did the red Triton manage to get in front of her by heading for the club end of the finish line away from the crowd, finishing 23<sup>rd</sup> and just 1 min in front of Dolphin Play. Well done John Brennan.



# WW Summer Series 2017-18 Race 20 Position at Start & Finish



The strong breeze at the start of the race was an advantage for the early starters. Sm 5985 INSX started at 34<sup>th</sup> position (49mins); by half way had dropped to 35<sup>th</sup> but improved 16 places at the end of the race finishing 17<sup>th</sup>. Sm99 Primo was 4 second early starting. It looks like she was finishing close to INSX but an extra 5 mins penalty recorded her finish 35<sup>th</sup>

## WW Summer Series 2017-18 Race 20 Elapsed Time

	time (hh:mm:ss)
	0:00:00      1:55:12      3:50:24
NUTCRACKER II	1:40:19
ESPRIT	1:49:13
SCARLET RUNNER-11	1:49:27
BRANNEW	1:51:23
INSX	1:54:03
CARPE DIEM	1:54:26
WIND SPEED	1:55:45
BARNSTORMER	1:55:58
ALIBI	1:59:45
BLUE TACK	2:00:44
ULUWATU	2:00:51
BABYDOLL	2:01:02
WHITE NOISE	2:01:39
SECOND NATURE	2:02:02
FUN AND GAMES	2:03:40
LEBROK	2:03:41
HOT CHIPPS	2:06:17
WHITE POINTER	2:08:01
y VINDALOO	2:09:25
a VANTAGE	2:10:22
c PRIMO	2:10:23
h ARABESQUE	2:12:57
t PHOENIX	2:13:08
FOGGY DEW	2:14:59
FIREFOX	2:15:05
MYUNA III	2:15:10
MAGIC	2:15:16
SUMMER WIND	2:15:49
PIAZZ	2:16:19
RAZZLE DAZZLE	2:16:26
MARIBEL	2:16:52
ROLLER COASTER	2:17:37
CLUB COMEDIE	2:17:59
BON VIVANT	2:21:43
VIVE LA VIE	2:24:17
SURI	2:24:36
SALTSHAKER	2:24:39
ANDANTE 1	2:25:33
WILLARIE	2:32:28
CASSANDRA..	2:39:46
PIPPA	2:40:31
MIDNIGHT MAGIC	2:44:45
DOLPHIN PLAY	2:45:38



Examples of how to get power into your jib. You may have to go to windward to make it look better.

WW Summer Series 2017-18 Handicap Adjustments																				
Boat Name	RACE NUMBER																			
	1	2	3	4	5	6	7	8	9	10	11	12	13	14	15	16	17	18	19	20
ALIBI		41	41	43	50	48	47	45	42	47	41	40	40	40	45	44	44	44	44	44
ALLIANCE	17	28	28	30	28	25	34	25	25	34	34	35	35	34	35	38	36	31	32	31
ANDANTE 1	3	8	9	9	17	13	17	14	8	17	11	15	18	18	15	20	19	17	19	17
ARABESQUE					35	32	36	32	32	32	33	32	32	33	35	32	32	31	32	31
BABYDOLL	36	34	34	34	39	36	39	35	35	39	36	35	35	36	40	38	37	38	37	38
BACARDI	40	41	41	38	43	43	43	43	41	43	42	40	40	40	45	47	47	46	47	46
BARNSTORMER	43	40	40	41	49	47	45	46	42	45	45	46	46	46	51	45	45	46	45	46
BLUE TACK	44	40	40	41	42	47	41	46	44	41	42	40	40	42	46	43	42	45	43	47
BON VIVANT	25	18	18	14	20	22	18	22	16	18	18	16	19	19	19	23	26	21	25	23
BRANNEW	42	40	43	47	48	45	49	45	45	49	46	45	45	46	51	48	48	45	50	45
CAFE RACER	15	10	10	15	15	10	13	10	10	13	10	13	13	10	15	18	18	15	18	15
CARPE DIEM	47	47	47	50	51	48	53	46	45	53	52	52	52	52	52	54	52	50	54	54
CASSANDRA																				
MELBOURNE	18	14	14	11	11	5	11	12	12	13	24	22	22	23	26	23	20	19	18	17
CLUB COMEDIE				11	9	4	14	4	23	28	25	25	25	25	32	32	32	31	33	31
CONQUEST	43	43	43	45	52	51	53	51	46	53	47	52	52	48	53	54	54	52	54	52
DAYDREAMER										32	28									
DOLPHIN PLAY	2	2	2	1	3	1	1	1	0	1	1	1	1	1	0	0	0	0	0	0
ESPRIT	48	46	46	48	54	53	55	51	44	55	55	58	58	58	62	59	59	61	59	61
FIREFOX			28	22		25	23	25	24	24	24	24	24	24	24	24	24	24	28	28
FOGGY DEW	18	16	16	12	18	14	17	14	12	17	20	21	23	23	25	23	23	20	23	16
FUN AND GAMES	34	35	35	31	36	32	38	32	32	38	35	34	34	35	36	39	39	38	39	38
HOT CHIPPS	24	36	38	34	35	31	41	32	31	41	32	32	34	36	35	41	40	33	40	32
INSX	49	44	44	44	44	48	47	47	44	47	44	44	44	44	48	48	48	49	48	49
LEBROK	39	37	37	41	42	42	42	40	40	42	36	34	34	34	42	38	37	40	37	40
MAGIC	27	28	28	26	31	24	32	23	23	32	24	29	29	26	30	31	31	32	31	32
MARIBEL	17	15	15	12	10	16	22	18	20	22	21	20	20	20	25	23	20	20	20	20
MIDNIGHT MAGIC	3	1	1	0	3	1	0	2	0	1	1	1	1	1	1	8	8	6	6	6
MYUNA III	24	24	24	24	23	17	21	18	24	21	23	21	21	19	24	27	34	31	34	31
NUTCRACKER II	65	57	57	65	60	61	57	60	64	57	59	58	58	58	68	61	60	63	63	68
PERFECT SENSE	44	38	38	30	20	10	10	9	9	9	9	9	9	9	12	12	30	26	30	22
PHOENIX													30	30	35	32	32	33	32	33
PIPPA	5	4	4	2	2	1	1	4	3	4	5	3	5	7	11	11	11	8	7	4
PIAZZ	19	24	24	15	24	21	24	21	16	24	27	29	29	28	29	32	31	28	31	26
PRIMO	38	35	35	38	37	39	38	38	39	38	36	34	34	34	40	36	36	38	36	38
QUINCO													34	34	39	38	38	39	38	39
RAZZLE DAZZLE	35	32	32	29	35	30	32	30	27	32	28	30	30	30	31	34	31	30	31	30
ROLLER COASTER	19	25	25	19	25	18	33	18	16	33	20	31	31	20	23	35	35	26	35	24
SALTSHAKER	21	14	14	12	12	10	15	15	15	15	22	25	25	22	26	28	20	24	20	20
SCARLET RUNNER-11																				63
SECOND NATURE	26	28	28	34	31	30	36	31	30	36	31	33	33	31	35	35	37	30	37	30
SHIMMER	52	50	50	49	54	53	50	53	51	50	53	52	52	53	56	57	57	58	57	58
STAMPEDE	51	50	50	52	55	52	50	52	50	50	50	53	53	51	53	58	58	53	58	53
SUMMER WIND	14	18	18	11	23	23	23	25	15	24	24	22	22	22	20	27	27	27	27	23
SURI	10	17	17	18	18	13	23	12	16	23	23	21	24	23	23	29	29	26	29	24
THE SECRETARY	45	41	41	41	46	43	44	42	40	43	41	44	44	44	45	48	48	45	48	45
ULUWATU																52		44	44	44
UPBEAT			36	37	40	40	39	39	38	39	36	34	34	34	40	38	37	36	37	36
VANTAGE	34	34	34	28	35	32	37	31	28	37	31	29	29	28	32	34	32	31	32	30
VINDALOO		33	33	34	39	36	36	36	34	36	36	34	34	36	39	39	39	40	39	40
VIVE LA VIE	17	13	13	10	13	11	12	11	8	12	3	3	3	3	4	3	0	3	0	0
WHITE NOISE	42	39	39	43	44	45	46	42	42	43	39	37	37	37	44	41	42	45	42	45
WHITE POINTER	12	24	24	13	21	19	32	24	26	37	36	38	38	36	38	38	45	39	44	36
WICKED	48	44	44	49	53	53	52	50	48	52	47	47	47	48	52	52	51	53	51	53
WILLARIE	5	2	2	2	2	2	1	1	1	0	4	2	4	5	10	10	4	7	4	2
WIND SPEED	46	43	43	44	51	48	48	46	44	48	42	41	41	43	47	46	46	47	46	47
MIN	2	1	1	0	2	1	0	1	0	0	1	1	1	1	0	0	0	0	0	0
MAX	65	57	57	65	60	61	57	60	64	57	59	58	58	58	68	61	60	63	63	68
RANGE	63	56	56	65	58	60	57	59	64	57	58	57	57	57	68	61	60	63	63	68
AVE	30	29	30	29	32	29	32	29	28	32	30	31	31	31	34	35	34	34	35	34
MEDIAN	31	34	34	30	35	31	36	31	29	36	32	33	34	34	35	36	36	33	36	33
INCREASES		12	3	21	33	8	28	11	7	40	11	16	7	13	43	22	6	19	26	17
DECREASES		28	0	21	8	37	14	31	30	6	28	24	0	13	4	19	18	29	20	28



WW Summer Series 2017-18 Nos. Of Top Ten Finishes	
YACHT	NUMBER
WHITE POINTER	7
BON VIVANT	7
SECOND NATURE	7
WHITE NOISE	6
FOGGY DEW	6
LEBROK	6
WILLARIE	5
ESPRIT	5
PIAZZ	5
RAZZLE DAZZLE	5
BACARDI	5
FUN AND GAMES	4
NUTCRACKER II	4
MYUNA III	4
ALIBI	4
BARNSTORMER	4
HOT CHIPPS	4
BRANNEW	4
CASSANDRA MELBOURNE	4
INSX	4
PIPPA	4
MARIBEL	4
ROLLER COASTER	4
CARPE DIEM	4
ANDANTE 1	4
SUMMER WIND	3
WICKED	3
ALLIANCE	3
CONQUEST	3
UPBEAT	3
PRIMO	3
SURI	3
SALTSHAKER	3
BLUE TACK	3
WIND SPEED	3
THE SECRETARY	3
BABYDOLL	2
FIREFOX	2
MAGIC	2
STAMPEDE	2
VANTAGE	2
CAFE RACER	1
CLUB COMEDIE	1
PERFECT SENSE	1
ARABESQUE	1
VINDALOO	1
VIVE LA VIE	1
MIDNIGHT MAGIC	1



### **Sm354 Vantage.**

Making use of being on  
starboard tack. She  
finished 10<sup>th</sup> after starting  
off 30mins at 17<sup>th</sup>

First place: **Sm491 VIVE LA VIE.**



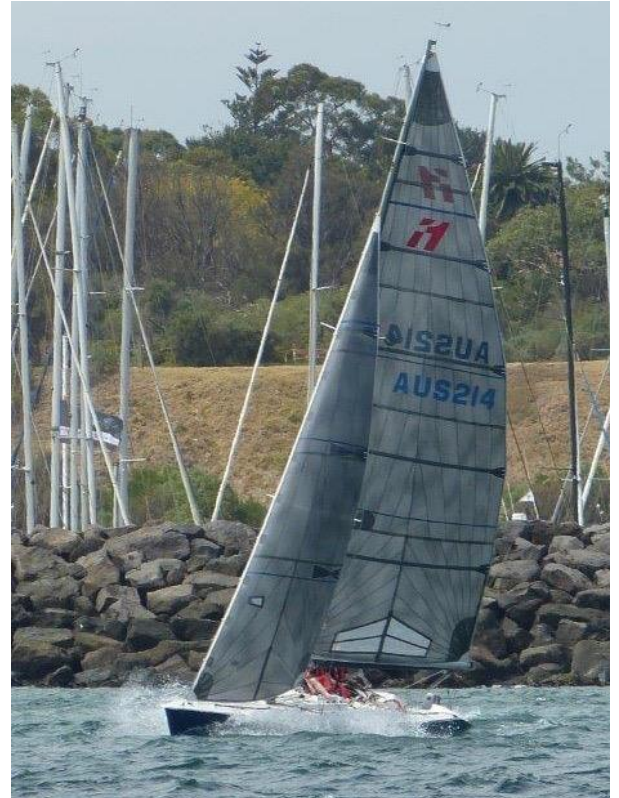
Second Place: **Foggy Dew** making the best use of her reduced handicap which dropped 7 mins. With another 6 mins she would have won. She rounded No 4 in 6<sup>th</sup> place.

Is that a Leprechaun sitting in the boom? Is that legal?





The last time Pippa saw this yacht in the race was when she could not make No 7 on Stb tack,



Which one of these yachts should you ask about the AMS results of this race?



Who  
did not

wipe their shoes or feet before climbing on the back of the boat?

Thanks to Windward Buoy, The Pappa Art Sea and Sandy Capper et al.

Maybe we will get a race in this week - a reminder it will be a Century Class race.

There is still room for more for the **Alma Doepel Tour** on March 5<sup>th</sup>. Contact Mark

*Sea U Soon   Mark Windward   mark-windward@live.com.au*