

Series Finale

Wednesday Wonders Winter Series 2016 Race 26

28th September 2016

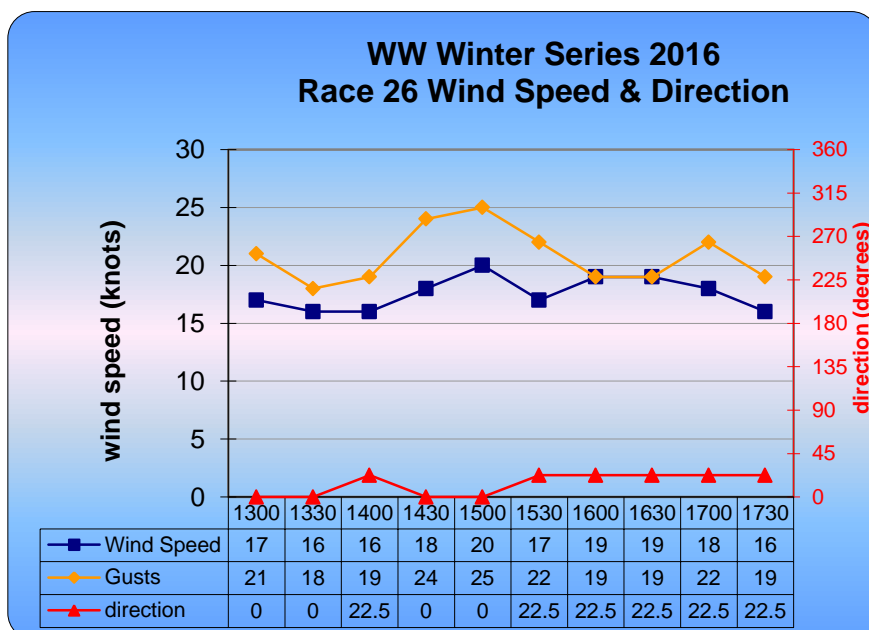


A strong fleet of thirty two yachts (including 5 casual entries) turned out for the last race of the series. It was contested in a nor-nor-easterly breeze that averaged around 18 knots at Fawkner Beacon. There appeared to be plenty of small gusts, not apparent in Fawkner observations, which kept the helmsmen on their toes. The race took the fleet around the 7 leg, 9.8 nautical mile course 7. This was the first time this series that the course had been selected and it suited two of the Oceanis yachts. The Oceanis 34 PIZAZZ (P. Martyn & R. Kemp) made this her first win of the series whilst the OCEANIS 43 WHITE POINTER (Tom Raft) finished 3rd. Finishing between those two was the Bavaria 40 VANTAGE (Darren Hunter) who recorded her 2nd podium finish of the series.

THE SECRETARY (George Shaw) had yet another perfect start to win Start of the day. This was the 3rd win for THE SECRETARY this series and the 2nd with a perfect start. She is in grave danger of winning the coveted Misty Blue Trophy.

NUTCRACKER II again recorded the fastest elapsed time around the course. On this occasion she was challenged by ESPRIT (Garry Anderson) and STAMPEDE (Christopher Gendala) who were only 16 and 25 seconds slower respectively.

GUN BOAT (Bruce Alexander) finished 13th but rather than being unlucky it confirmed her as the aggregate winner. She is one of only 2 yachts to have completed all 19 races in the series and finished with a total of 49 points - 10 point lead over the rest of the fleet. This race had some impact on other positions in the aggregate with MAGIC (Phil Spry Bailey) finishing in a tie with FOGGY DEW (Grahame Jones) for 9th place.





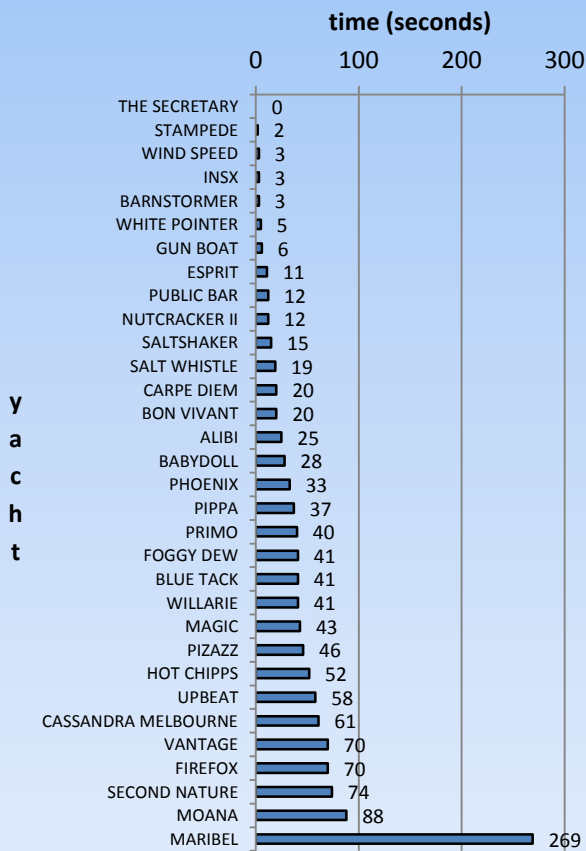
This was the second podium finish for PIZAZZ. Her first was in the first race of the series in which she finished 3rd. She started this race from 8th place 46 seconds late for her 25 minutes handicap. PIZAZZ was already leading the fleet by 2 minutes 55 seconds at the first rounding of number 4 after sailing the first 4 legs in 1:04:29. PIZAZZ was able to retain her lead for the remaining three legs of the course and was first across the finish line at 15:35:53 – a margin of 32 seconds. PIZAZZ has sailed 14 races and finished 19th in the aggregate.

VANTAGE was one of 3 yachts with a handicap of 25 minutes. She did not have the best of starts being 70 seconds late especially when one of her starting companions, WHITE POINTER, was only 5 seconds late. VANTAGE moved from 16th position to be 4th at the first rounding of number 4. She was still 69 seconds behind WHITE POINTER. It was during the later stages of the race that VANTAGE made her move when she sailed the last 3 legs of the course 83 seconds faster than WHITE POINTER. If only she had made a better start she may have caught PIZAZZ. VANTAGE sailed 9 races and finished 27th in the aggregate.



WHITE POINTER has sailed 15 races this series and already has a first and second place to her name. She was only 5 seconds late for her start from 15th place. After she sailed the first 4 legs of the course in 59 minutes 35 seconds she had moved into 2nd place. It was only during the last 3 legs of the race that WHITE POINTER was overtaken by VANTAGE. WHITE POINTER had sailed the 7 legs of the course in 1:32:39 crossing the finish line at 15:36:39 only 14 seconds behind VANTAGE. This 3rd place helped WHITE POINTER finish 15th in the aggregate.

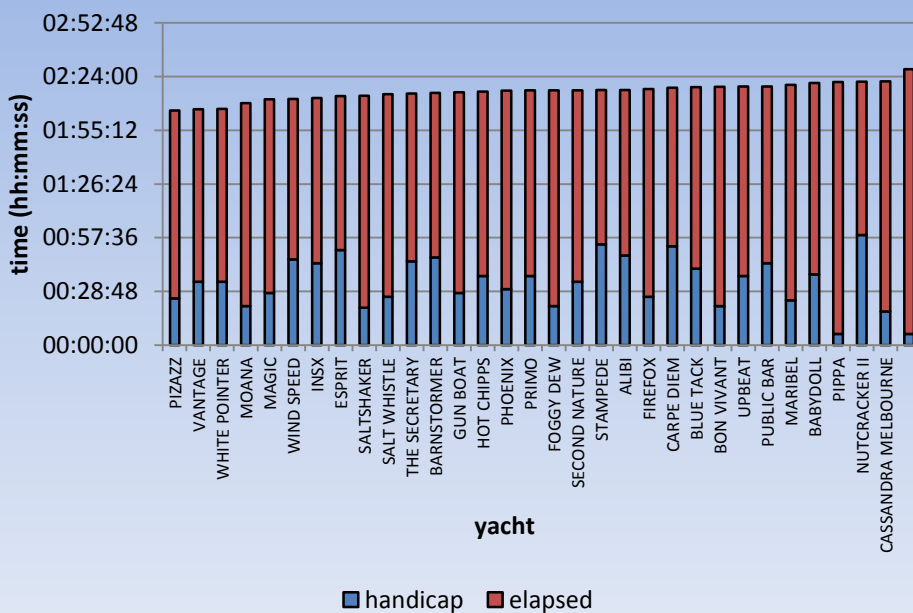
WW Winter Series 2016 Race 26 Start of the Day



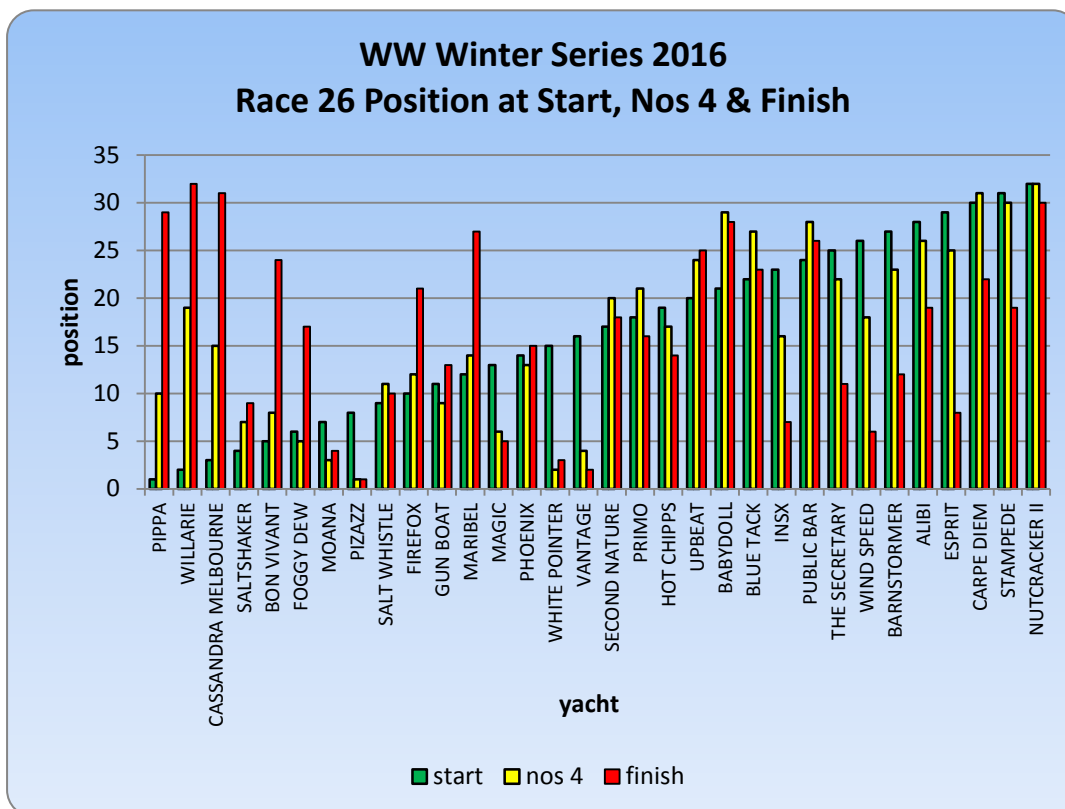
For the 10th time this series a yacht won Start of the Day with a perfect start. On this occasion it was THE SECRETARY repeating her performance of race 13. The median start time for the race was 28 seconds – the highest of the series and follows on from the lowest median start time recorded in race 25. In this race only 7 yachts started within 10 seconds or less of their handicaps whilst 6 yachts started more than a minute late.

Although the fleet finished 22 minutes and 6 seconds apart there were some close finishes. There was a tie for 19th place between STAMPEDE and ALIBI (Denis Hambleton). Only 13 seconds separated the 5 yachts finishing 16th to 19th whilst 13 yachts finished within 10 minutes of the winner

WW Winter Series 2016 Race 26 Result

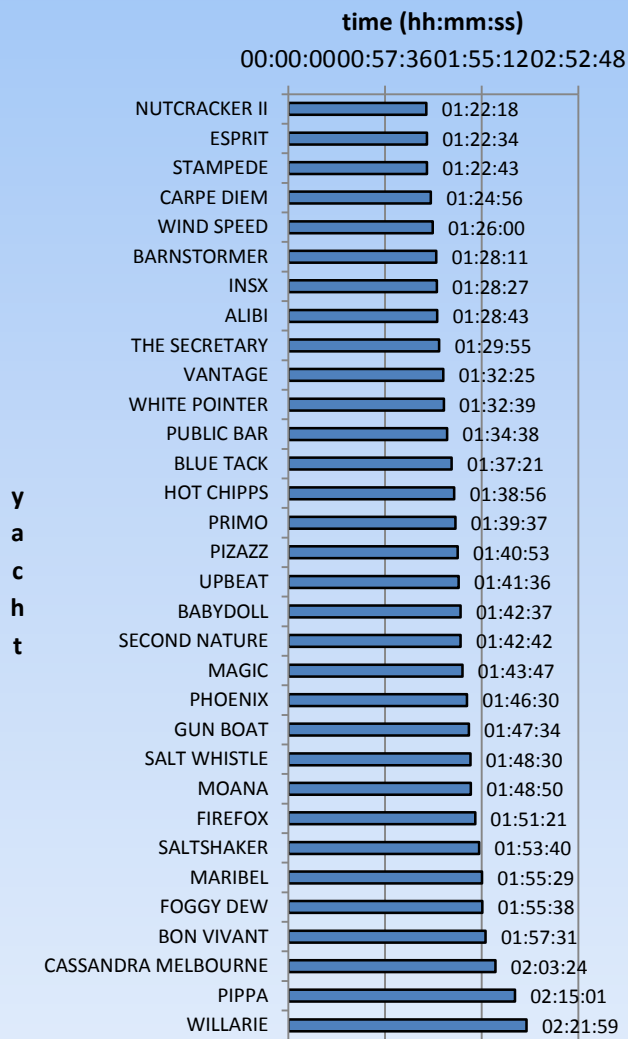


There was a lot of positional change in this race with each finishing an average of 13 places away from where it started. Most of the positional change took place in the last 3 legs rather than the first 4 legs of the course. The top ten finishers comprised 4 that started among the early starters, 3 from mid fleet and 3 from the late starters.



This was one of the faster races of the series with an average elapsed time of 1:42:05 and a range of 59 minutes 41 seconds separating the fastest from the slowest yacht. No two yachts sailed the course in the same elapsed time but BABYDOLL (Brendan Kruger) and SECOND NATURE (Paul Mentiply) came within 5 seconds of each other.

WW Winter Series 2016 Race 26 Elapsed Time



The last of the 6 Century Class races was won by MOANA with MAGIC 2nd and SLATSHAKER 3rd. Complete results are shown in the table below.

CENTURY CLASS SERIES 2016 RESULT RACE 6					
YACHT	DESIGN	SKIPPER	ELAPSED	FINISH	HCAP
MOANA	Bluewater 400	Stan Rankin	1:48:50	15:39:50	0:21:00
MAGIC	S & S 39	Phil Spry-Bailey	1:43:47	15:41:47	0:28:00
SALTSHAKER	Jarkan 925	Ken Gayler	1:53:40	15:43:40	0:20:00
BON VIVANT	S80	Russell Keays	1:57:31	15:48:31	0:21:00
PIPPA	Triton 24	Jeffrey Woolhouse	2:15:01	15:51:01	0:06:00
CASSANDRA MELBOURNE	Mottle 33	Bob Reeves	2:03:24	15:51:24	0:18:00
WILLARIE	Triton 24	Graeme Kaufman	2:21:59	15:57:59	0:06:00

The winner of the WW aggregate was GUNBOAT, one of only two yachts to complete all 19 races. Throughout the series she accumulated 9 top ten finishes which included 2 wins and a third place. GUN BOAT started the series with a handicap of 23 minutes and following a number of adjustments finished with a 28 minute handicap.



WW Winter Series 2016 GUN BOAT RACE RECORD									
RACE	DATE	POSN	ELAPSED	FINISH	HCAP	SOD	COURSE	DISTANCE	WIND SPEED
1	6-Apr-16	14	1:41:57	15:34:57	0:23:00	3	63	9.1	15
2	13-Apr-16	6	2:13:37	16:06:37	0:23:00	100	61	9.8	10
3	20-Apr-16	18	2:12:44	16:05:44	0:23:00	15	61	9.8	14
5	4-May-16	22	1:50:48	15:43:48	0:23:00	7	38	10.2	18
7	18-May-16	19	2:02:24	15:55:24	0:23:00	6	64	10.1	16
9	1-Jun-16	1	1:46:19	15:39:19	0:23:00	2	61	6.4	6
12	22-Jun-16	4	1:48:02	15:42:02	0:24:00	3	64	10.1	15
13	29-Jun-16	20	1:56:51	15:51:51	0:25:00	8	61	9.8	18
14	6-Jul-16	1	1:49:03	15:44:03	0:25:00	7	16	9.8	16
16	20-Jul-16	7	1:45:15	16:22:15	0:27:00	15	13	5.3	6
17	27-Jul-16	12	1:38:07	15:36:07	0:28:00	17	16	9.8	17
18	3-Aug-16	3	1:44:30	15:42:30	0:28:00	14	14	7.4	10
20	17-Aug-16	6	1:32:03	15:41:03	0:29:00	1	13	4.5	6
21	24-Aug-16	6	1:59:34	15:59:34	0:30:00	4	14	9.8	11
22	31-Aug-16	31	2:03:12	16:03:12	0:30:00	10	14	9.8	15
23	7-Sep-16	24	1:49:23	15:48:23	0:29:00	7	61	9.8	18
24	14-Sep-16	10	1:58:42	16:26:42	0:28:00	40	61	9.8	23
25	21-Sep-16	20	1:55:12	15:53:12	0:28:00	3	16	9.8	14
26	28-Sep-16	13	1:47:34	15:45:34	0:28:00	6	7	9.8	18

WW Winter Series 2016 Aggregate Top Ten			
POSN	YACHT	SKIPPER	LENGTH
1	GUN BOAT	Bruce Alexander	24
2	PIPPA	Jeffrey Woolhouse	24
3	WIND SPEED	Les Browne	36
4	CARPE DIEM	Paul Commins	50
5	THE SECRETARY	George Shaw	44
6	ALIBI	Dennis Hambleton	36
7	SALTSHAKER	Ken Gayler	30
8	BARNSTORMER	Brian Barnes	42
9	MAGIC	Phil Spry-Bailey	39
10	FOGGY DEW	Frank Hilliard	32

*Windward
Buoy*

MARK WINDWARD'S WORDS

Rowan's comments about Course 7 were correct. The amount of windward work was significant. Based upon the rhumb line length of the course 48% was a beat; 40% a run and 12% a reach. The large percentage of beating gave the larger yachts an advantage.

As handicapper Rowan has scored quite well on the 10 minute test of the number of yachts crossing the finish line in ten minutes. Thanks for all your time and effort Rowan.

Thanks also to Windward Buoy for another season of producing stats for Wednesday Wonders races. While he does not get up to the bar often until after presentation he is responsible for all the first part of these reports and the graphs etc. He always has them completed on time and we do exchange ideas about the race - so the bulk of the work is done by Graham Furness on MAGIC.

A plea from Mark to the tower to make early decisions on courses to allow some equality between all yachts starting.

Sail selection requires careful consideration, including the course that is to be sailed.

If the course is not chosen until five or ten mins before a yacht starts, it does not allow enough time to alter sails, particularly with those hanked on foresails.

Yachts starting later have this information for 30 or up to 60 mins before their start.

The same advantage occurs if a race is postponed. There is little time for the early yachts to prepare for a course, or for a change in wind strength or direction, to adjust starting positions, sail trim or sails.

Mark considers that all yachts in Wednesday Wonders should have the same information in making choices and therefore he advocates decisions on courses and starting times to be made at least 30min before the start to give all yachts equal time to prepare their yacht to race.

Should Daylight Saving Time apply to Wednesday Wonders?

Summer breezes come in late afternoon so for most summer races the wind increases about 30%. after 14:00.

Why do we need a class flag for Wednesday Wonders?

Should we have expected more than one division to be racing last week? Are different classes going to be introduced for Wednesday Wonders? The flag that Baby Doll inquired about, and some thought was a No.3, was a class flag. Flags are difficult to distinguish from the water, so it would be preferable to not add more complexity to the flag pole.

Close Winter Results

It seems like this is the season for close results with one point between 2nd and 3rd overall and a few other results have been very close. The bookies are not taking any bets for the MISTY BLUE trophy. Rumour has it that it is so close it has been checked five times to ensure a correct result. Come to Presentation Night to find out all the results for this season.

Jacqueline Hope Blog update Monday, 26 September 2016 S/V Shanti 0419 10 28 48

CLICK <http://shantiatsea.blogspot.com.au/>

Thanks to all the Wednesday Wonders skippers and crew and to those organizing Wednesday Wonders that have made Wednesdays such an enjoyable event. Particular thanks Di and Margaret and their helpers, not only in the tower but also for some excellent presentation nights.

For Summer season Mark may not comment on every race but Windward Buoy will still provide his weekly analysis.

Comment and Contributions send to [Mark Windward](#).

This late edition has been due to the weekend of celebrations of a family crew member.

All of us could take a lesson from the weather. It pays no attention to criticism.