

**“Come together right now...”**  
**Wednesday Wonders Winter Series 2015 Race 11**  
 10 Jun 2015

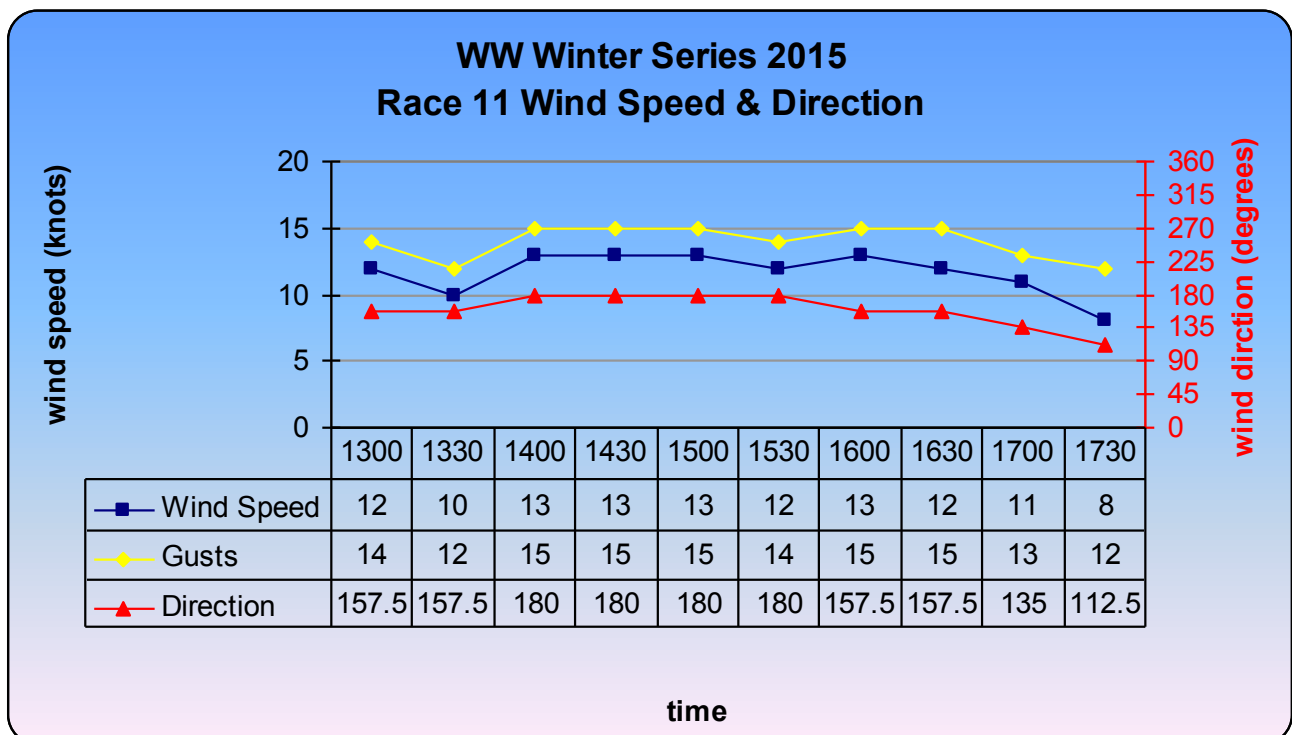


Race 10 saw the fleet finish further apart than when they started without any yacht finishing within 10 minutes of the winner. Race 11 saw the fleet *Come Together*. All of the 34 yachts finished within 28 minutes 47 seconds of each other and 22 yachts finished within 10 minutes of the winner.

There were 3 close finishes with 3 seconds separating 2<sup>nd</sup> from 3<sup>rd</sup> and only 1 second separating 12<sup>th</sup> from 13<sup>th</sup> and 20<sup>th</sup> from 21<sup>st</sup>. Three yachts recorded their first podium finish of the series and Start of the Day was won with a perfect start for the 6<sup>th</sup> time this series.

Chosen for the 2<sup>nd</sup> time this series was the 9.8 nautical miles, 6-leg course 14. Approximately 3.1 nautical miles separate the two marks of the second leg making it one of the longer legs between fixed marks in the list of courses.

Conditions were good for the race with relatively flat seas and an average wind speed of about 12 knots was recorded at Fawkner Beacon. Only after the race was over did the breeze fall below 10 knots. Although the sun shone for the start of the race, cloud cover did increase as the race progressed and there was a corresponding decrease in the temperature. Even some of the most stoic wearers of sailing shorts chose long trousers.





Recording her first win of the series was the Jarken 925 SALTSHAKER (Ken Gayler). She had a good start only 6 seconds late for 16 minute handicap from 4<sup>th</sup> place. SALTSHAKER was in 2<sup>nd</sup> place at the first rounding of number 4 and held the lead at the finish line. She sailed the course in 2:12:27 and crossed the finish line at 15:58:27. SALTSHAKER has completed 5 races this series and this win gave her a big lift in the aggregate from 17<sup>th</sup> to 8<sup>th</sup> place.



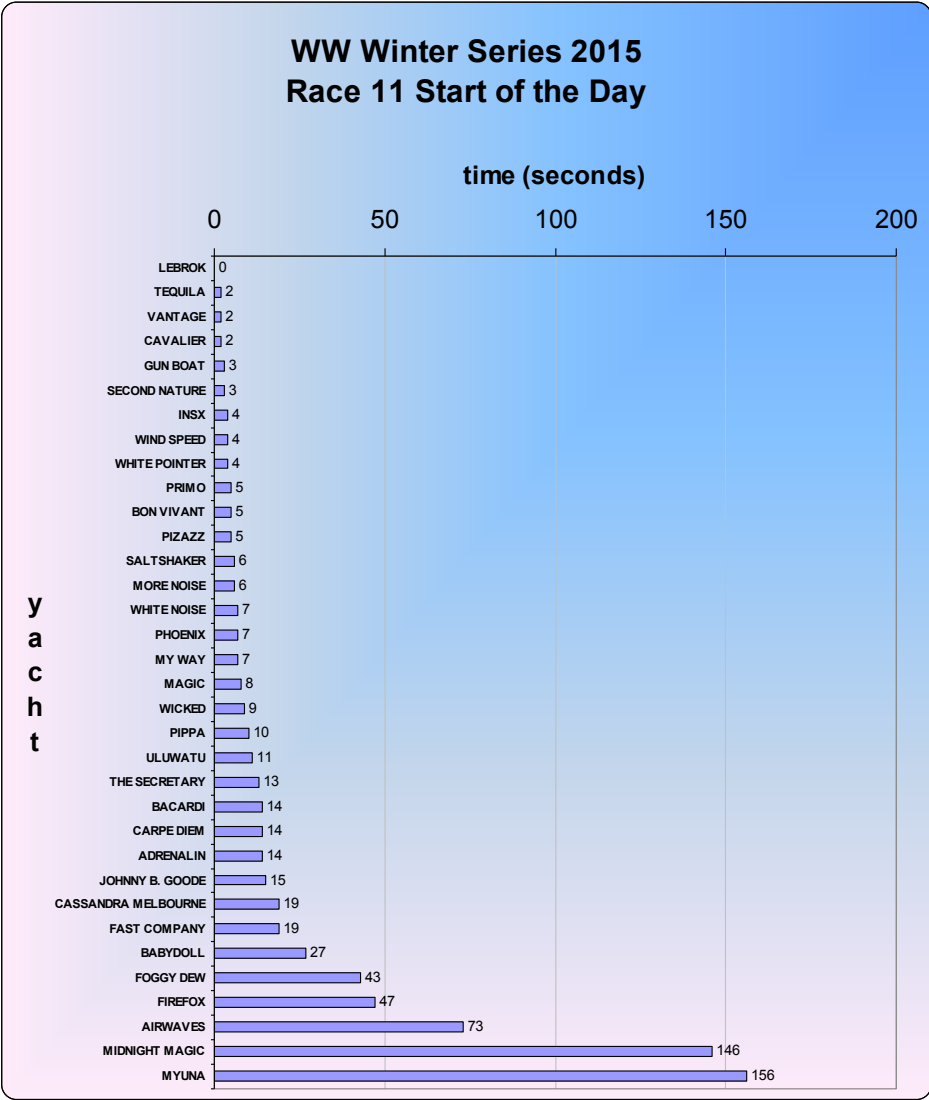
The Beneteau First 35 WHITE NOISE (Daniel Edwards) is one of 10 yachts to have sailed all 8 completed races this series. She started race 11 from 23<sup>rd</sup> place 7 seconds late for her 36 minute handicap. By the first rounding of number 4 WHITE NOISE had moved up 11 places in to 12<sup>th</sup> place and then improved her position by another 10 places to finish 2<sup>nd</sup>. She crossed the finish line at 15:59:10 only 43 seconds behind SALTSHAKER. WHITE NOISE sailed the course in 1:53:10 and this podium finish helped her into 12<sup>th</sup> place in the aggregate with a total of 35 points.



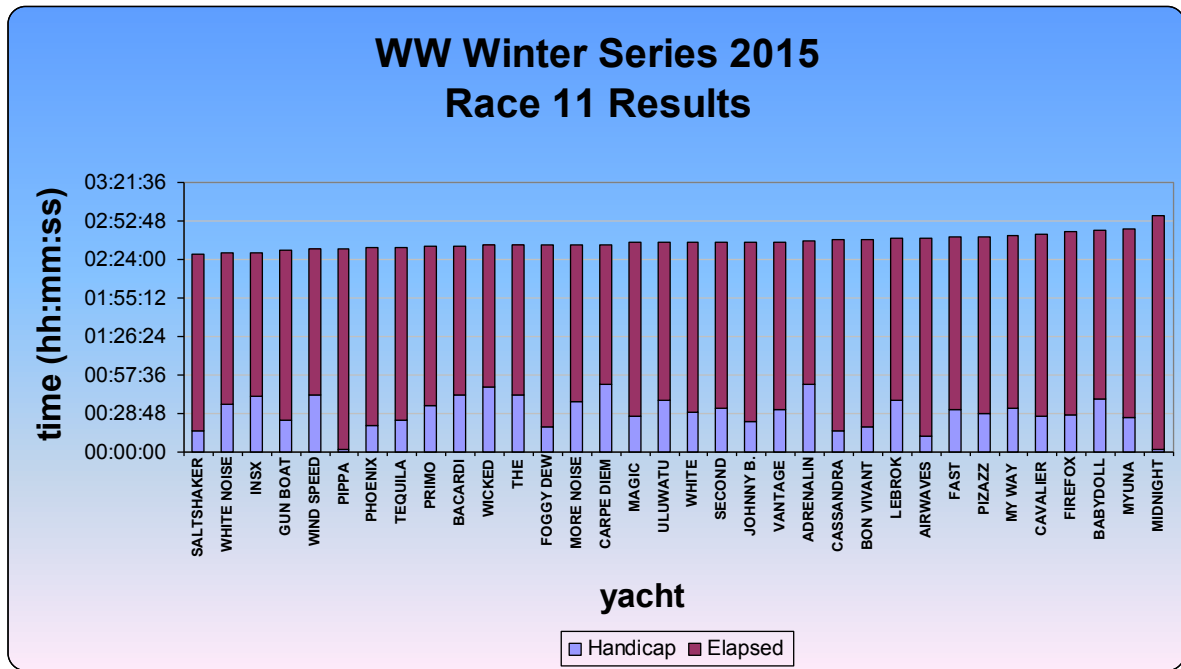
It was the NSX 38, INSX (Rob Sills) that finished only 3 seconds behind WHITE NOISE. INSX had started from 28<sup>th</sup> place only 4 seconds late for her 42-minute handicap – her lowest handicap of the series. She put in a very strong performance sailing the course in the 4<sup>th</sup> fastest time of the race – 1:47:13 – crossing the finish line at 15:59:13. INSX had improved her position by 13 places at the first rounding of number 4 and she improved it by 12 places during the last 3 legs of the race. INSX is another yacht to have completed the 8 races this series and is 18<sup>th</sup> in the aggregate on 46 points.

With the perfect start to the race it was the Beneteau 367 LEBROK (Theo Korbel) that won Start of the Day. Overall the fleet had a great start with a record median start time for the series (7 seconds). All but 6 of the 34 yachts started within 20 seconds of their respective start times. *What were very impressive were the clear hand signals given by Lebrok*

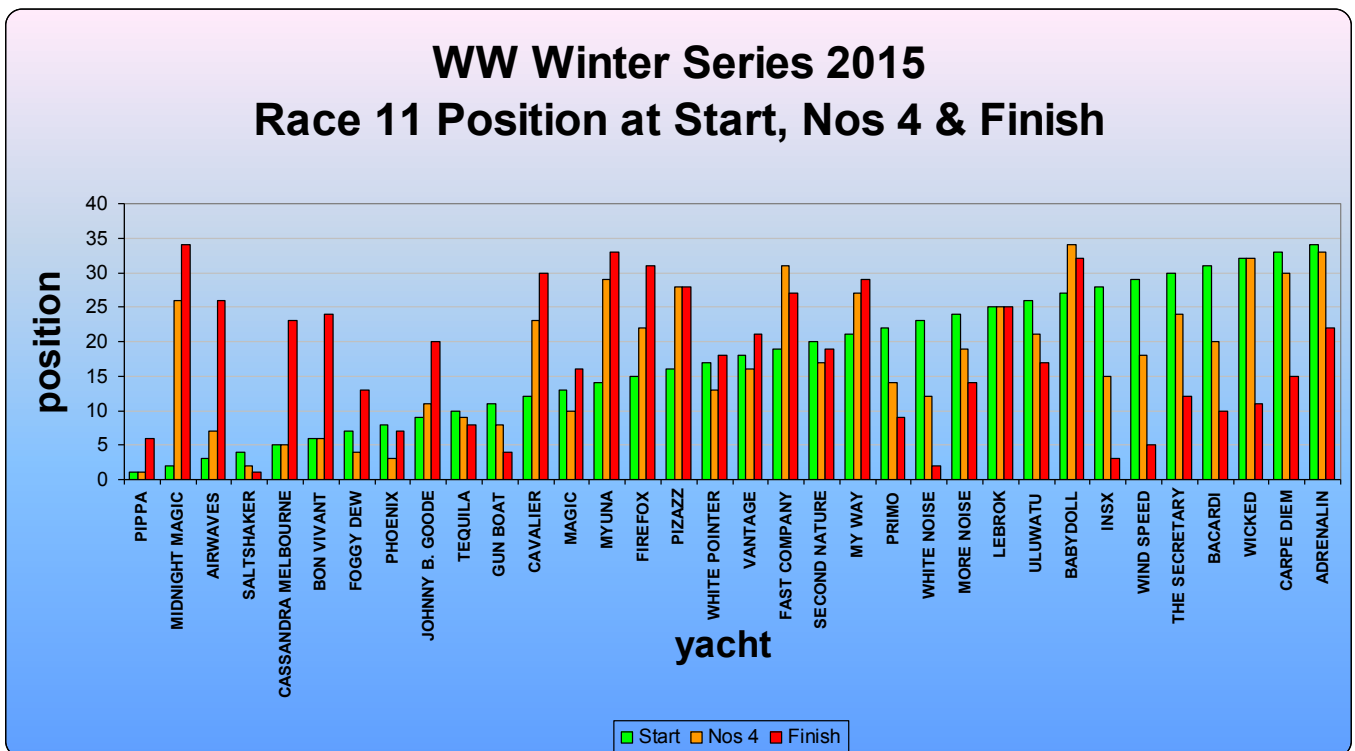
I think all yachts should give clear hand signals like that when turning left.



With the fleet starting within 49 minutes of each other this was the most compact start to the series so far. By the first rounding of number 4 only 22 minutes 1 second separated the fleet, which finished 28 minutes 47 seconds apart.



Five yachts that started amongst the first 11 yachts and 5 that started amongst the last 11 yachts made up 10 of the first 11 yachts to finish. Half (6) of the mid fleet starters finished amongst the last 11 yachts with 3 early starters and 2 late starters making up the 11.

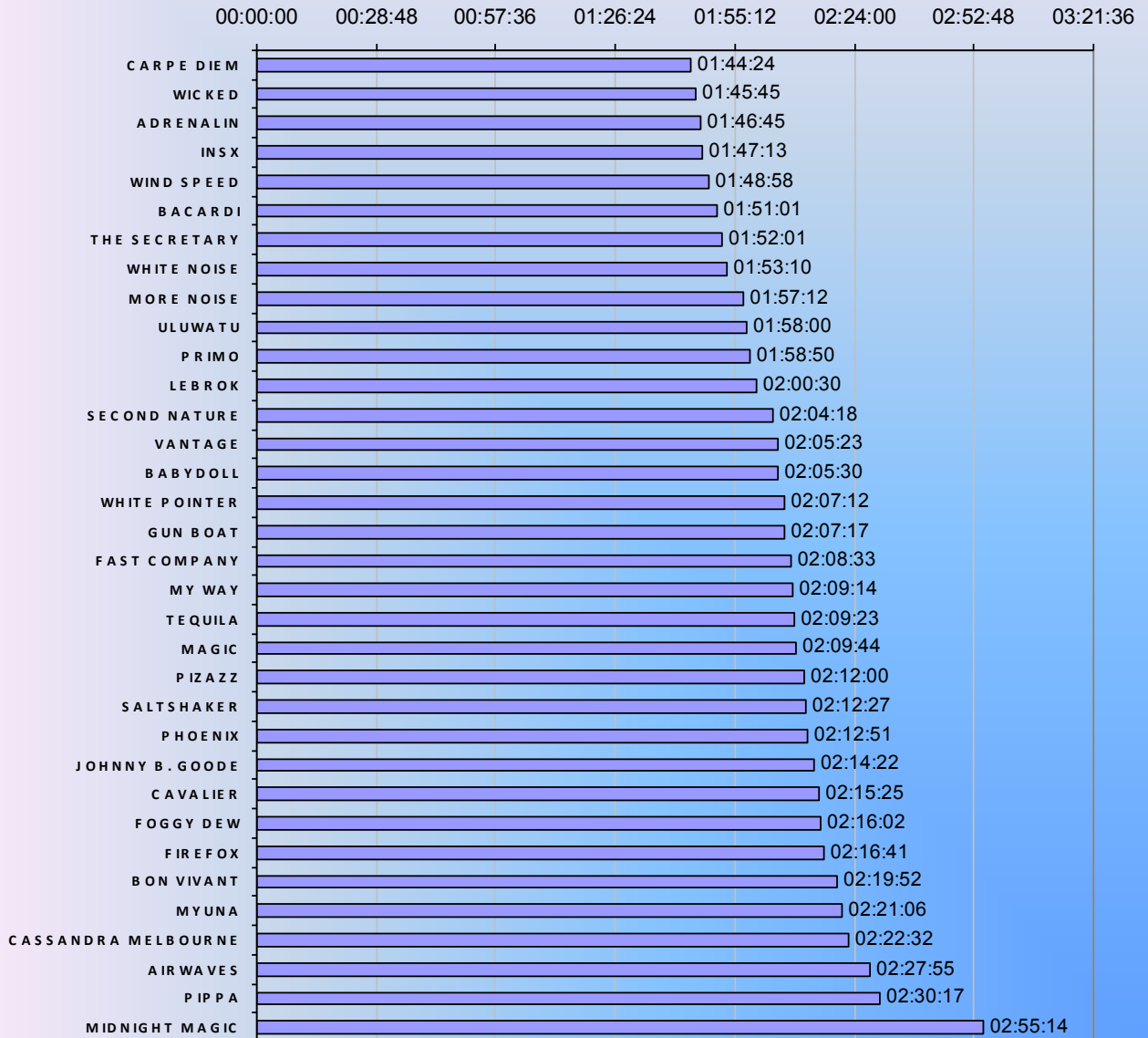


With a time of 1:44:24 it was the Beneteau First 50, CARPE DIEM (Paul Commins) that recorded the shortest elapsed time for the race. She was followed closely by the Beneteau First 40 WICKED (Mike Welsh) and Sydney 38 ADRENALIN (I.Beer & A.Molnar) 1 minute 21 seconds and 2 minutes 21 seconds behind CARPE DIEM respectively. The average elapsed time for the race was 2:07:16 with 23 yachts having over 2 hours sailing.

# WW Winter Series 2015 Race 11 Elapsed Time

time(hh:mm:ss)

y  
a  
c  
h  
t



Handicaps regularly move both up and down throughout the WW series and this series is no different. The average adjustment over the first 11 races was 5 minutes 8 seconds. LEBROK received the largest adjustment of 14 minutes. The table on the following page illustrates the handicap changes this series.

YACHT	AVERAGE	RACE								
		1	2	3	4	5	8	9	10	11
ADRENALIN	00:52:00				00:56:00	00:49:00				00:51:00
AIRWAVES	00:10:48	00:11:00	00:12:00		00:09:00	00:10:00				00:12:00
ALIBI	00:49:30	00:52:00	00:51:00		00:52:00	00:48:00	00:48:00	00:46:00		
BABYDOLL	00:40:00									00:40:00
BACARDI	00:45:30		00:50:00		00:49:00	00:44:00		00:44:00	00:43:00	00:43:00
BARNSTORMER	00:49:00	00:49:00	00:49:00		00:49:00					
BELLABLU	00:34:30	00:37:00				00:32:00				
BON VIVANT	00:18:20				00:19:00	00:17:00				00:19:00
CARPE DIEM	00:52:30		00:56:00		00:55:00	00:51:00	00:51:00		00:51:00	00:51:00
CASSANDRA MELBOURNE	00:15:00	00:18:00	00:17:00		00:17:00	00:13:00	00:12:00	00:12:00		00:16:00
CAVALIER	00:21:43		00:21:00		00:21:00	00:17:00	00:22:00	00:22:00	00:22:00	00:27:00
DARK ENERGY	00:39:40				00:43:00	00:39:00			00:37:00	
DEJA VU	00:32:00	00:32:00								
ESPRIT	00:54:30	00:54:00	00:56:00		00:56:00	00:52:00				
FAST COMPANY	00:32:51	00:34:00	00:34:00		00:34:00	00:30:00	00:34:00		00:32:00	00:32:00
FIREFOX	00:28:40	00:33:00	00:32:00		00:32:00	00:23:00	00:24:00			00:28:00
FOGGY DEW	00:17:17	00:20:00			00:20:00	00:16:00	00:13:00	00:14:00	00:19:00	00:19:00
FORZADO	00:29:30	00:30:00			00:30:00	00:29:00	00:29:00			
FUN AND GAMES	00:38:30	00:41:00	00:41:00		00:38:00	00:34:00				
GUN BOAT	00:25:52	00:27:00	00:27:00		00:30:00	00:24:00	00:26:00	00:26:00	00:23:00	00:24:00
INSX	00:47:00	00:55:00	00:51:00		00:50:00	00:46:00	00:46:00	00:44:00	00:42:00	00:42:00
JOHNNY B. GOODE	00:24:36		00:25:00		00:28:00	00:24:00			00:23:00	00:23:00
LEBROK	00:41:17		00:50:00		00:47:00	00:39:00	00:39:00	00:39:00	00:36:00	00:39:00
LUCILLE	00:33:00	00:33:00								
MAGIC	00:27:15	00:30:00	00:30:00		00:28:00	00:24:00	00:25:00	00:27:00	00:27:00	00:27:00
MIDNIGHT MAGIC	00:04:00		00:08:00		00:06:00	00:02:00			00:02:00	00:02:00
MOANA	00:21:12	00:19:00	00:23:00		00:24:00	00:20:00		00:20:00		
MORE NOISE	00:40:50		00:45:00		00:44:00	00:40:00		00:40:00	00:38:00	00:38:00
MY WAY	00:31:53	00:35:00	00:35:00		00:35:00	00:30:00	00:30:00	00:28:00	00:29:00	00:33:00
MYUNA	00:26:00									00:26:00
PHOENIX	00:21:30				00:25:00		00:21:00		00:20:00	00:20:00
PIPPA	00:03:45	00:04:00	00:05:00		00:10:00	00:03:00	00:03:00	00:01:00	00:02:00	00:02:00
PIAZZ	00:26:43	00:24:00	00:26:00		00:26:00		00:25:00	00:28:00	00:29:00	00:29:00
PRIMO	00:38:48				00:43:00	00:39:00	00:39:00	00:38:00		00:35:00
PUBLIC BAR	00:50:30	00:53:00	00:53:00		00:50:00	00:46:00				
SALT WHISTLE	00:25:00	00:27:00	00:27:00			00:23:00		00:23:00	00:25:00	
SALTSHAKER	00:15:48	00:19:00					00:14:00	00:14:00	00:16:00	00:16:00
SECOND NATURE	00:32:15	00:34:00	00:34:00		00:34:00	00:30:00	00:30:00	00:30:00	00:33:00	00:33:00
SHIMMER	00:46:00				00:48:00	00:44:00				
STAMPEDE	00:55:00		00:58:00		00:59:00	00:55:00	00:54:00	00:52:00	00:52:00	
SURI	00:25:09	00:24:00	00:25:00		00:25:00	00:26:00	00:25:00	00:25:00	00:26:00	
TEQUILA	00:24:40	00:27:00			00:27:00	00:23:00		00:23:00	00:24:00	00:24:00
THE SECRETARY	00:44:17		00:46:00		00:46:00	00:43:00	00:44:00	00:45:00	00:43:00	00:43:00
TRUE COLOURS	00:26:00					00:26:00				
ULUWATU	00:39:08	00:39:00	00:40:00		00:42:00	00:38:00	00:38:00	00:38:00	00:39:00	00:39:00
UPBEAT	00:36:15	00:36:00	00:37:00		00:38:00	00:34:00				
VANTAGE	00:29:45	00:24:00	00:29:00		00:33:00	00:29:00	00:29:00	00:30:00	00:32:00	00:32:00
WHITE NOISE	00:38:22	00:43:00	00:41:00		00:41:00	00:37:00	00:37:00	00:36:00	00:36:00	00:36:00
WHITE POINTER	00:30:00									00:30:00
WICKED	00:51:40	00:55:00			00:55:00	00:51:00		00:51:00	00:49:00	00:49:00
WILLARIE	00:05:00				00:05:00					
WIND SPEED	00:47:22	00:53:00	00:51:00		00:50:00	00:47:00	00:47:00	00:45:00	00:43:00	00:43:00



A Noisy Yacht



Just needed a bit more Magic

**RULE REMINDER**

What happens if someone calls for Water?

1. Do you serve them a drink?
2. Throw a bucket of water over them?
3. Check your rule book to see if you can just ignore the call?
4. Get out of their way so they don't crash into a rock?

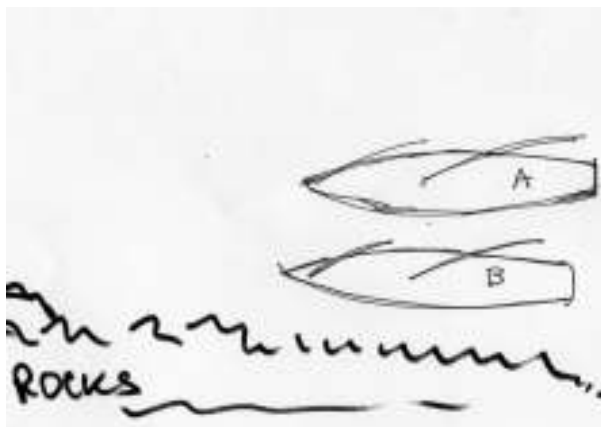
Skippers are reminded that in the revision of sailing rules 2013 – 2016 rule **20 Room to tack at an obstruction** was completely rewritten. The rewrite reinforced that the hailed yacht must act even if the hail is improper.

In the following situation:

What happens if yacht B calls for water?

See if you can answer this yourself.

Note: you will need an up to date Blue Book 2013 -2016



The answer will appear next week.

### Summer Starting time

Skippers will have received a note from the SYC sailing committee about the Wednesday Wonders Summer races starting at 14:00.

Mark has a vested interest in going back to a 14:00, as Pippa is often the first off. So added to these comments are some more impartial notes from Windward Buoy.

It is frustrating to start a race and have only very light wind and then see it increase, as your handicap time is gobbled up. Not only has your boat moved a lot slower but it often has also travelled a longer distance. Within the first 40 mins the race is just about all over.

It is why I like sailing in winter with a steady breeze that is consistent from the start of the race. I should add a note from the handicapper's yacht that the skipper's highlight of WW racing is not just to win but also to get to first mark before Pippa.

For handicaps to work successfully a consistent breeze is needed. This does not happen with the summer 13:30 starts.

Another advantage is that sailors will have more time to enjoy their meals and less cases of indigestion will result.

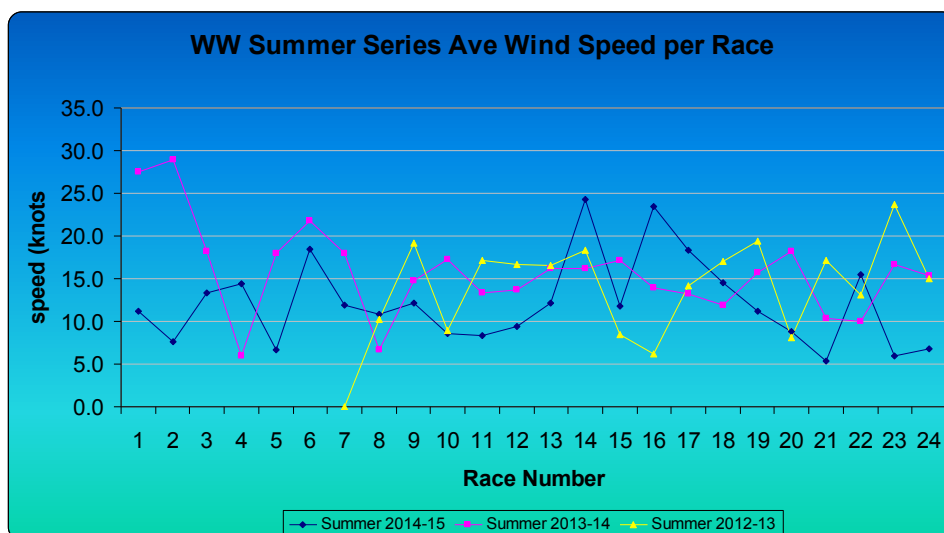
### TWO O CLOCK START – Windward Buoy Notes

Below is a chart that plots the average wind speed per race over the past 3 summer series. The values are observations at Fawkner Beacon. The average wind speed for each series was:

SERIES	AVE
2012 -13*	14.7
2013-14	15.8
2014-15	12.1

\* No values for races 1 to 8

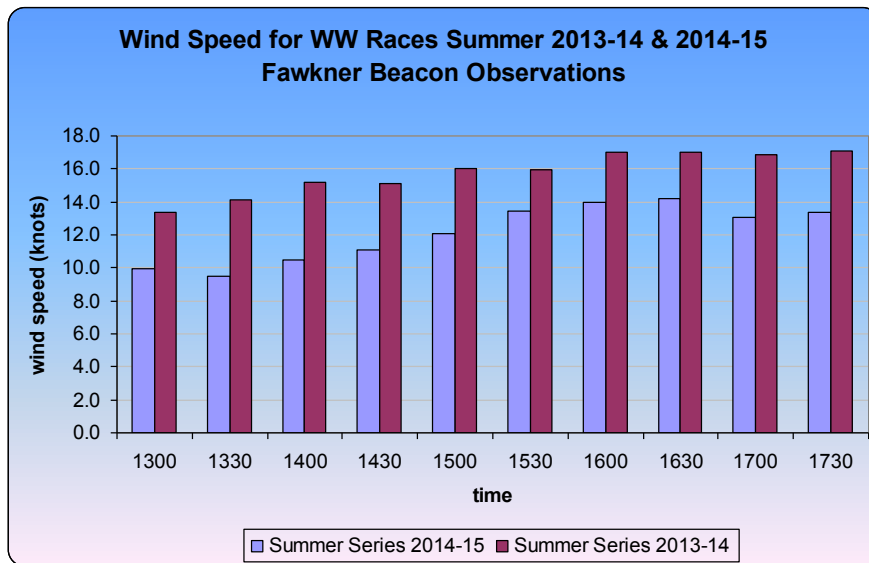
It is worth noting that the average wind speed for the 2014-15 series was noticeably less than in the previous 2 series.



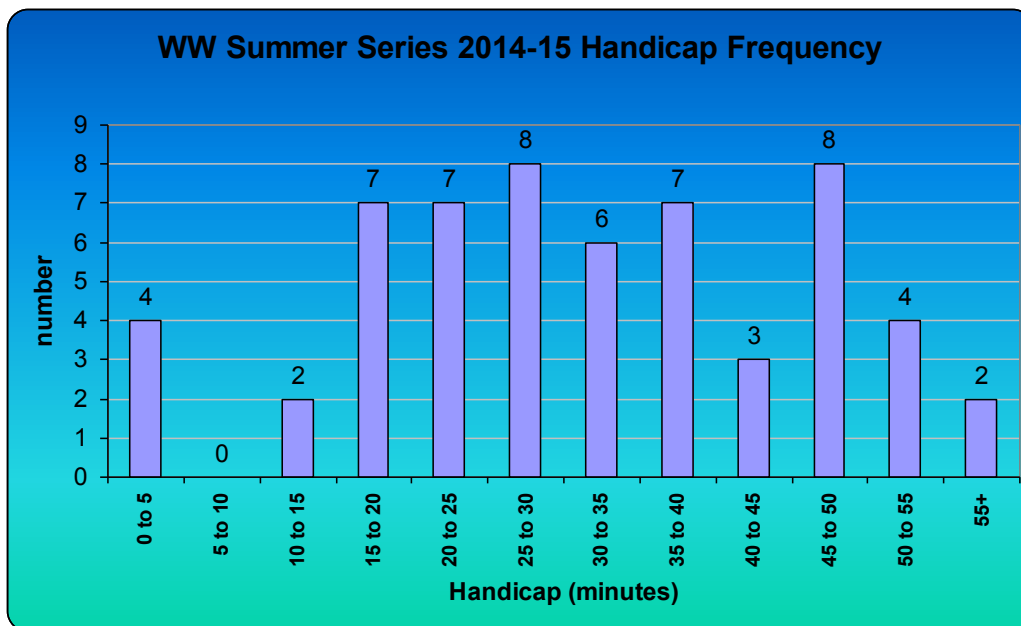
The graph below compares the wind speed at 30-minute intervals for every race day (regardless of whether it was abandoned) in the 2013-14 and 2014-15 series.

In both cases there is an increase as the afternoon progresses. There were 13 occasions during 2014-15 when the wind speed was 7 knots or less at 1330 at Fawkner Beacon. There were 7 occasions during 2013-14 when the wind speed was 7 knots or less at 1330 at Fawkner Beacon.





There were 58 yachts that completed races in the summer series. Of the 58 yachts 30 had an average handicap of 30 minutes or more. That is, they already started at 1400 or later. The chart below shows the number of yachts in each 5-minute handicap group.



By inference a later start would mean a later finish. The later finishes in the 2014-15 summer series were in the region of 1615-1630. This would suggest finishes around 1645 to 1700 with a 1400 start. In light conditions later finishes could be avoided if there were shorter courses. It may be worth pondering the effect on food, beverage and raffle receipts at both lunch and dinner times with a start at 1400.

Congratulations to the current top position GUN BOAT. Changing the yacht's name does not seem to have brought her any bad luck. She had another 4<sup>th</sup> position finish in this race, which is her third 4<sup>th</sup> for the season. This places her in top position in the series, 1 point ahead of VANTAGE, and followed by a small non-white yacht.

### **Answer to QUESTION 10** *What ship am I?*

I was built at Cockatoo Island. I had a sea life of only six years. I spent some time in Australia before being transferred to the East Indies. I also spent time in the Red Sea operating in that area as ferry. I was transferred to South East Asia. I was trying to do my job but was sunk in the process of carrying out my duties. I was one of 13 of my class of ships. Maximum Speed 16.5knts. I had geared turbines with a power of 2,000 horsepower.

The answer is the H.M.A.S. YARRA She was named after the Yarra River and was a Grimsby Class Sloop of which there were 13. Four of the class were built in Australia. The ship's company in peacetime was 135 officers and sailors; this increased to 160 during the war.

*On January 1942 with the deterioration in Southeast Asia and the withdrawal from that area, she was assigned to escort duties. On March 2 she was to escort Anking, Francol MMS-51. The next day she rescued 40 survivors from the Paragi, a Dutch ship. On March 4<sup>th</sup> she encountered a Japanese convoy of 3 cruises and four destroyers. She attempted to lay down a smoke*



*screen so the other boats could scatter while she attempted to hold off the Japanese ships. The other three ships were pursued and sunk, and the Yarra was sunk by cruiser gunfire. Only 34 survived including some of the rescued Dutch sailors. By the time the Dutch Sub K-X1 rescued them on the 9<sup>th</sup> March only 13 had survived.*

On the anniversary of the Yarra's loss in March 2014, a [Unit Citation for Gallantry was awarded retrospectively to the ship's company at the time of her sinking.](#)

To find out more about [Click.](#) This includes her operational history.

### **Race 11 Question: What ship am I?**

I am certain that all of you would have sailed past me quite a few times. I am the only survivor of my class of ship thanks to a dedicated group of people who have cared for me since 1974. I have travelled 117,000 miles 188,300 kilometres mainly around the coast of Australia. My range of travel is about 2500 – 3000 Nm. One of my longest stretches "At sea" was for 327 days. My draft is only 2.5meters, which enabled me to be used close to the shoreline.

I was built in Australia. I had a crew of 70 when I was first launched but this grew to about 100 as extra equipment was added to me. I am now moored close to the where I was built. My engines were built in Castlemaine.

From November 1945 I changed my role and served a different purpose, until the 70's.

**This weeks Warning:** Elastic luggage strap injuries. Death or serious injury can occur if an elastic luggage strap fails while carrying a heavy load. On average, 16 reported injuries per annum in Victoria occur as a result of elastic luggage straps.

Please send your answer to [MARK WINDWARD.](#)

Thanks to Andrew Cavalier for photos and others. Thanks to Windward Buoy and to the editors of this publication. Please share your photos, stories, your perspective of the race and your replies to the rules test, just to prove you understand them, to Mark Windward

*When everything is coming your way, you're probably on the wrong tack.*