

The Closest Finish Yet!

Wednesday Wonders Race 15 Summer Series 2016-17

(18 Jan 2017)

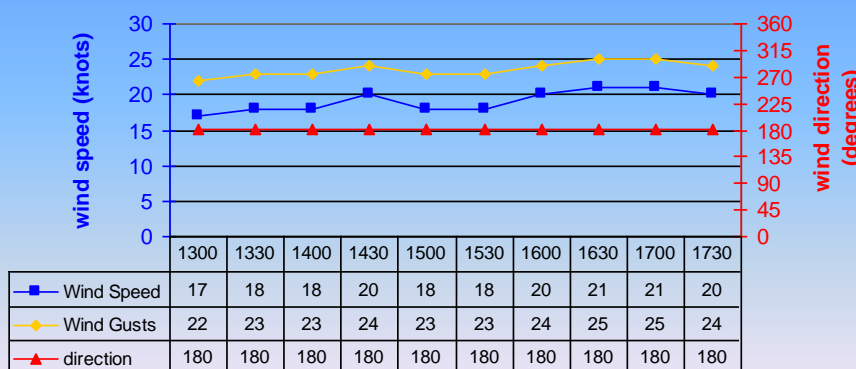


With a yacht crossing the finish line on average every 21 seconds this was the closest finish to a race this series. After starting 52 minutes 55 seconds apart all 34 yachts completed the race within 11 minutes 47 seconds of the winner. Despite the infamous “Port Philip Chop” this became the second fastest race around the longest course this series. STAMPEDE (Christopher Gendala) was first across the line to record her second win of the series. Not only did she win the race she also sped around the 8 leg course in the fastest time of the day. She was the 3rd last yacht to start and it wasn’t until the 8th and final leg of the race she found the lead. She won by 31 seconds. In 2nd place was MOANA (Stan Rankin) who made this her second podium finish. Crossing the line 1 minute 3 seconds behind MOANA was HOT CHIPPS (John Chipp) in 3rd place making this her second 3rd place and 3rd podium finish for the series.

NUTCRAKER II won Start of the Day for the second time. Even with a good start, 2 seconds late for her handicap, it was a bit slower than the 0 and 1 second starts that have become the “norm”. After being the sole leader of the aggregate for 2 successive weeks PIPPA (Jeffrey Woolhouse) finds herself in a tie for top spot with DÉJÀ VU (Peter Dransfield). DÉJÀ VU finished 7th in this race which helped lift her from 3rd place to joint leader on 47 points. Returning to the aggregate top ten was SURI (Rick Blanck) who finished the race in 4th place. Moving in the opposite direction was BON VIVANT (Russell Keays) who slipped from 4th to 14th place.

The steady southerly breeze that averaged about 19 knots at the Fawkner played an important role in the race. Of the 10.1 nautical mile rhumb line distance, about 63% was sailed on a reach with the remainder being a beat.

WW Summer Series 2016-17
Race 15 Wind & Direction



time



STAMPEDE started her summer with a win in the first race. In the 11 races that followed she was unable to record another podium finish until this race. She got away to her best start of the series only 4 seconds late for her 51 minute handicap. STAMPEDE sailed the first 4 legs of the course in 44 minutes 40 seconds and the last 4 legs of the course in 34 minutes 37 seconds. She moved from 32nd place to 26th in the first 4 legs and from 26th to 1st place in the remaining 4 legs. STAMPEDE sailed the course in 1:19:21 to cross the finish line at 15:40:21. She started 46 minutes 57 seconds behind the first yacht to start, WILLARIE (Graeme Kaufman) and finished 11 minutes 47 seconds ahead. STAMPEDE moves up from 27th to 16th place in the aggregate.

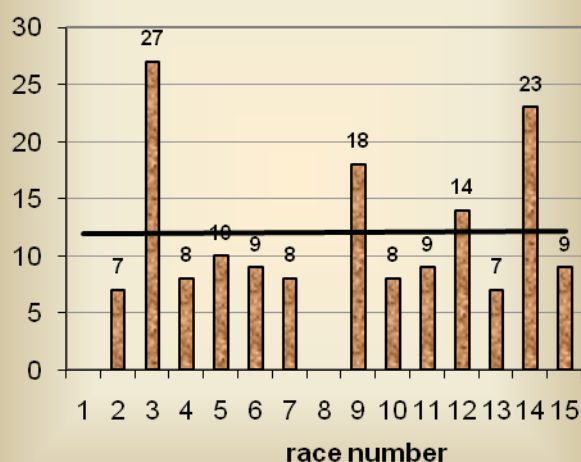
MOANA moved from 19th to 11th place in the aggregate following her 2nd place in this race. She is one of 8 yachts to have completed 12 races and has now accumulated 2 podium and a further top ten finish. She started from 6th place 15 seconds late for her 21 minute handicap. She was still in 6th place after completing the first 4 legs of the course in 1:02:44. It was during the last 4 legs of the race that MOANA made her move to finish in 2nd place, 31 seconds behind the winner. She had sailed the course in 1:49:52 and crossed the finish line at 15:40:52.



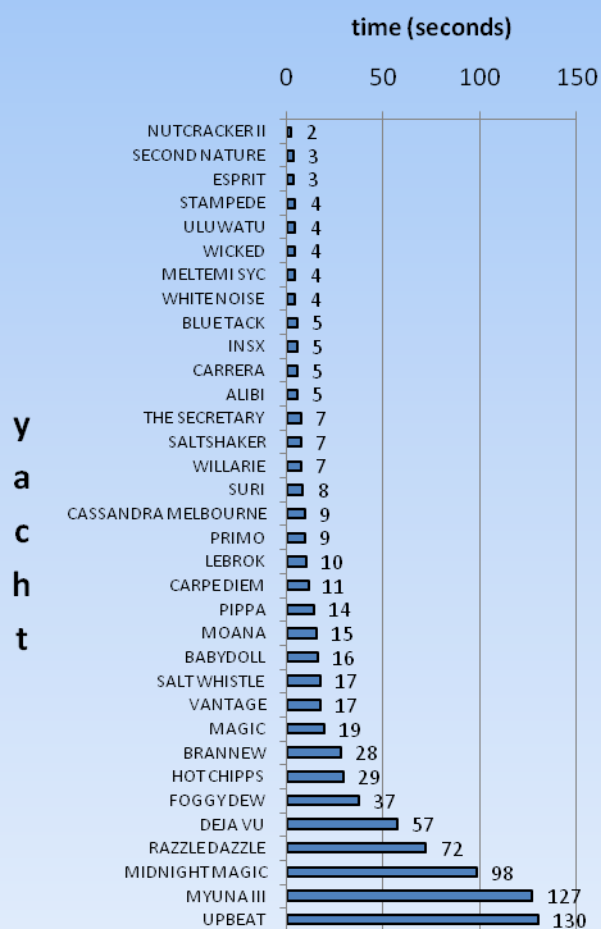
This is the first full series that the Oceanis 41 HOT CHIPPS has been able to contest. The Oceanis series of yachts seem to get better results when the breeze is about 15 knots or more. HOT CHIPPS has sailed 10 races this series with the last 4 showing 3 podium finishes. The breeze has averaged 16 knots or over for her 3 podium finishes. She started this race from 16th place 29 seconds late for her 32 minute handicap. On rounding number 4 for the first time she had moved into 12th place still 8 minutes 18 seconds behind the leader. HOT CHIPPS crossed the finish line in 3rd place at 15:41:55 after sailing the course in 1:39:55. She moves up the aggregate by 8 places from 30th to 22nd.

The median start time was 9 seconds - below the 12 second average. NUTCRACKER II won Start of the Day with SECOND NATURE (Paul Mentiplay) and ESPRIT (Garry Anderson) close behind with 3 second starts. Four and five second starts proved popular with a total of 9 yachts off these times. All but 5 yachts started within 37 seconds or less of their handicaps with only 4 yachts starting more than 60 seconds late. There were no early starters.

**WW Summer Series 2016-17
Start of the Day - Median Value**

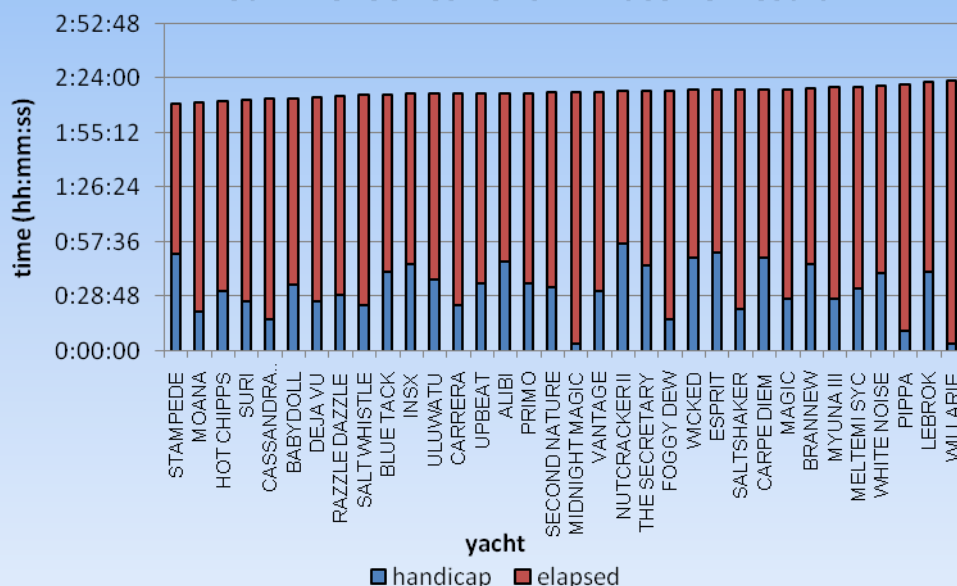


**WW Summer Series 2016-17
Race 15 Start of the Day**

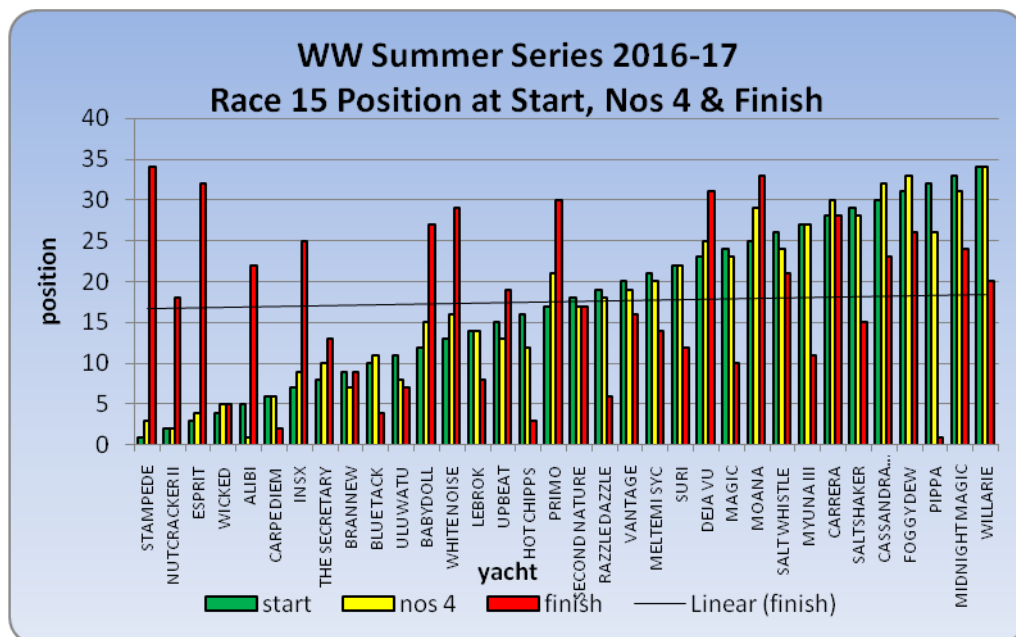


The fleet started the race 52 minutes 55 seconds apart. By the first rounding of number 4 this gap had reduced to 20 minutes 45 seconds and finished with the fleet 11 minutes 47 seconds apart.

WW Summer Series 2016-17 Race 15 Result

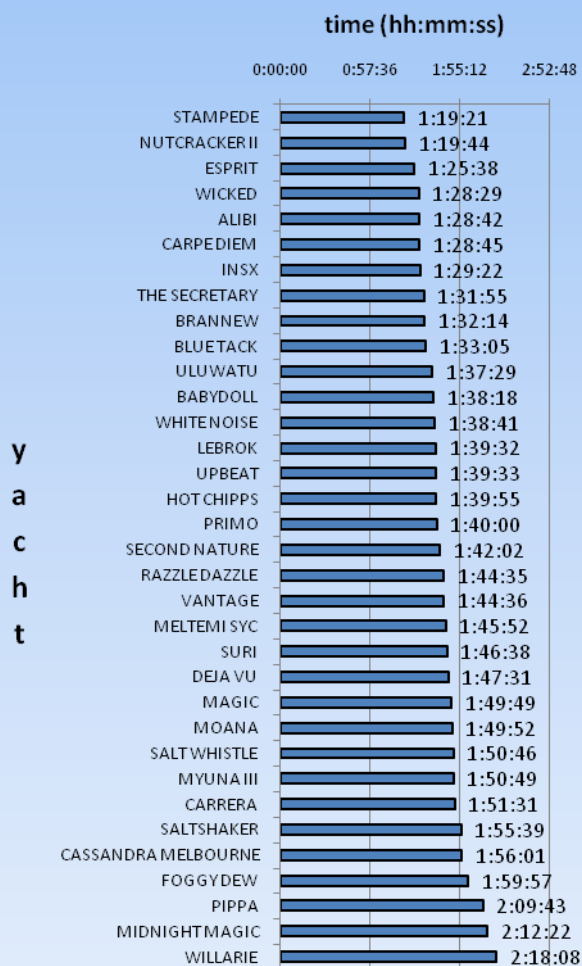


Separated by 2 seconds were: THE SECRETARY (George Shaw) and FOGGY DEW (Frank Hilliard) in 21st and 22nd place; PRIMO (Steve Copley) and SECOND NATURE in 16th and 17th place whilst 4 seconds separated ULUWATU (Mal Billings), CARRERA (Geoffrey Simpson) and UPBEAT (Peter Dunne) who finished 12th, 13th and 14th respectively.



Most of the overtaking took place during the last 4 legs of the race. On average each yacht changed places by 2 positions during the first 4 legs. They changed places by 12 places during the last 4 legs. The black trend line indicates that early, mid fleet and early starters were quite evenly distributed at the finish.

WW Summer Series 2016-17 Race 15 Elapsed Time



For the 4th time this series STAMPEDE proved to have the fastest elapsed time in the race. Her time of 1:19:21 was 23 seconds faster than NUTCRACKER II and 23 minutes 47 seconds faster than the fleet average of 1:43:08. The average elapsed time was the 2nd best of the series and only 3 yachts were admitted into the exclusive Two Hour Club.

Windward Buoy

Mark Windward ask the questions

TWO-HOUR CLUB ...with inclusion of those who just missed out Is any other yacht missing?

						Seconds late	
	Yacht	Handicap	time taken	finish place	start time	past No 4	
Sm303	Pippa	11	2:09:43	32	14.00	4	
SM1101	Midnight Magic	4	2:12:22	18	98.00	2	
Sm315	Willeri	4	2:18:08	34	7.00	3	
Sm32	Foggy Dew	17	1:59:57	22	37.00	1	
Sm 1147	Cassandra	17	1:56:01	5	9.00	5	

IN RACE 15.....?

Which yacht had two crew down below, one acting as a nurse and the other as a patient?

Which class of yachts all had trouble at No3 with rounding up and doing a 360° without hitting the mark?

Clue: It is a slower class which needs a little more space when rounding buoys that larger yachts do not seem to need.

Which yacht maybe had their sail number with the course possible due to fog and in a costly detour misted the correct mark?



Who was the male who has been displaying himself well within the range of the powerful binoculars of the tower ladies and checking the depth of the water?

Please consider the unfair size differences when some items are viewed in such a manner and the effect it could have on smaller males (Photo with held this time)

Which yacht did not have its sails properly washed, dried and ironed before being hoisted and as a result had sails with lots of creases

Which yacht forgot to check that their bungs were in tight and the cocks shut off?



Which yacht was seriously considering sending a crew member over the side to clean the bottom of the hull where is a bit dirty



Which yacht had one regular crew back on board and one extra who looks to have weighed the yacht down?



Which yacht needed another 10 people on the rail not just 4 legs hanging over the side to get her to sit flatter and her speed up?



Which yacht should try to go around the waves and not crash through them



Which skipper with a brand new yacht should take a little more care to gently look after his new?



Thanks to Windward Buoy, the 'Pappa art sea' Ian. Barry and Graham, and to other contributions from the tower management and 'anamous' WW sailors.

Please send your photos, comments. or reports about your boat in the race... particularly any reports to the crew etc. to

[MARK WINDWARD](#)

Who do you think said this?

My goal in sailing isn't to be brilliant or flashy in individual races, just to be consistent over the long run.

