

WW Summer Series 2014-15 Race 23 - Light Breeze Teases Fleet in Jaffa Cup

(18 mar 2015)

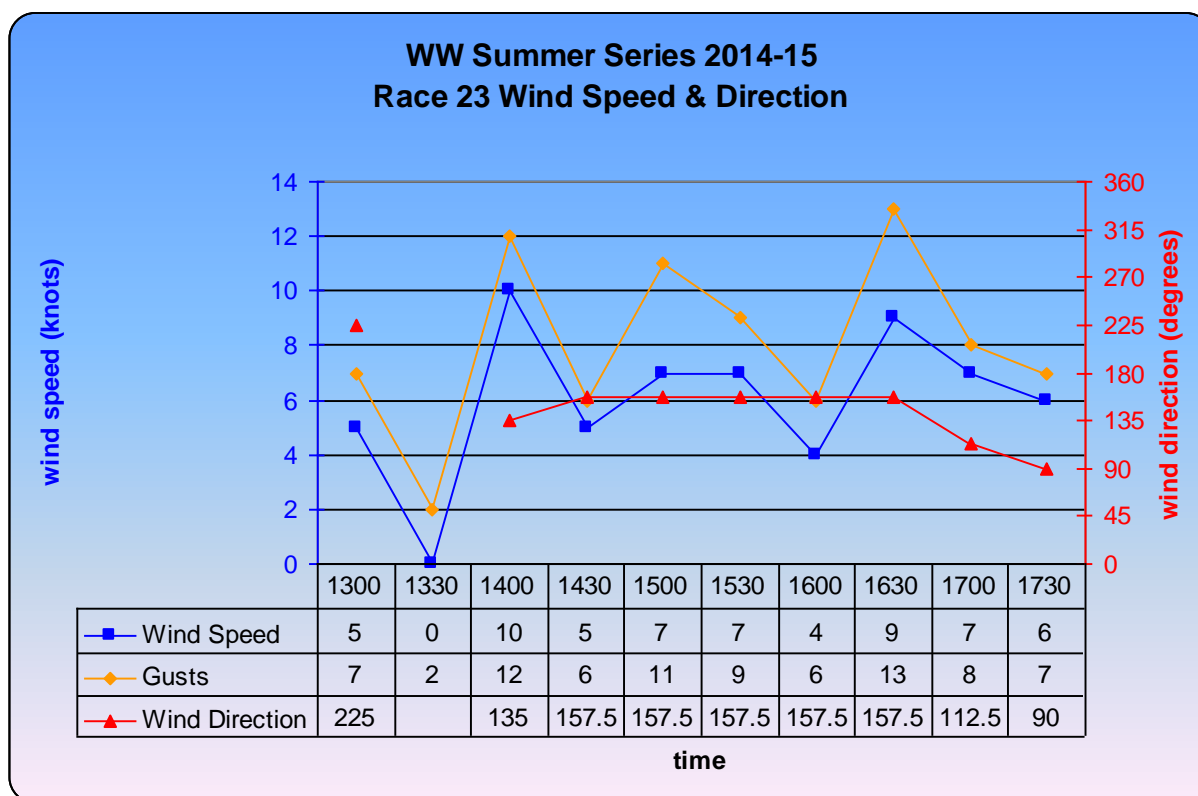


With an average breeze of 6 knots that varied both up and down several times between 0 to 10 knots, the race for the Jaffa Trophy around a shortened course became a test of perseverance, patience and concentration.

There were a number of occasions when the “breeze had settled in for the afternoon” but it was only teasing and disappeared as quickly as it appeared. With zero breeze being recorded at Fawkner Beacon at 1330, starting was the first challenge. Of the 36 starters, 4 yachts started too soon and penalized by 5 minutes, whilst one yacht was 19 minutes 19 seconds late.

The second challenge was making the first mark and it was during this initial leg that it became obvious that handicaps were not going to play a major role in the result. At one stage the fleet was aiming at all points of the compass being guided by the tide and Port Philip Chop as much as by the rudder. Some yachts were lucky or skilful enough to find the breeze to establish a lead at least for part of the time.

At one stage the fleet was stretched along all 4 legs of the shortened course. As time passed by with the chance of a result looking more and more unlikely, yachts began to retire. Of the 36 starters a record 13 (over 33%) Did Not Finish. The remaining 23 yachts finished about 34 minutes further apart than when they started with the final finisher crossing the line at 17:50:12. The average time to complete the course was the 2nd longest of the series and the average apparent speed to sail the course was the slowest of the series at 1.48 knots.



Note the wind at 13.30 '0' knts and at 14.00 10knts (MW)



Making this her 2nd win in 3 races was INSX (Rob Sills). She had a good start from 31st place only 5 seconds late for her highest handicap start of the series – 51 minutes. She sailed the course in the 2nd shortest time of the race and was on the last of 4 legs before she got to the front of the fleet to finish the race at 16:23:30 to win the Jaffa Cup for 2014-15 series. This ensured the finish time for the race was extended by 45 minutes. INSX has completed 20 of the races this series, recorded 8 top ten and 3 podium finishes. This win consolidated her 3rd place in the aggregate, 8 points behind the leader.



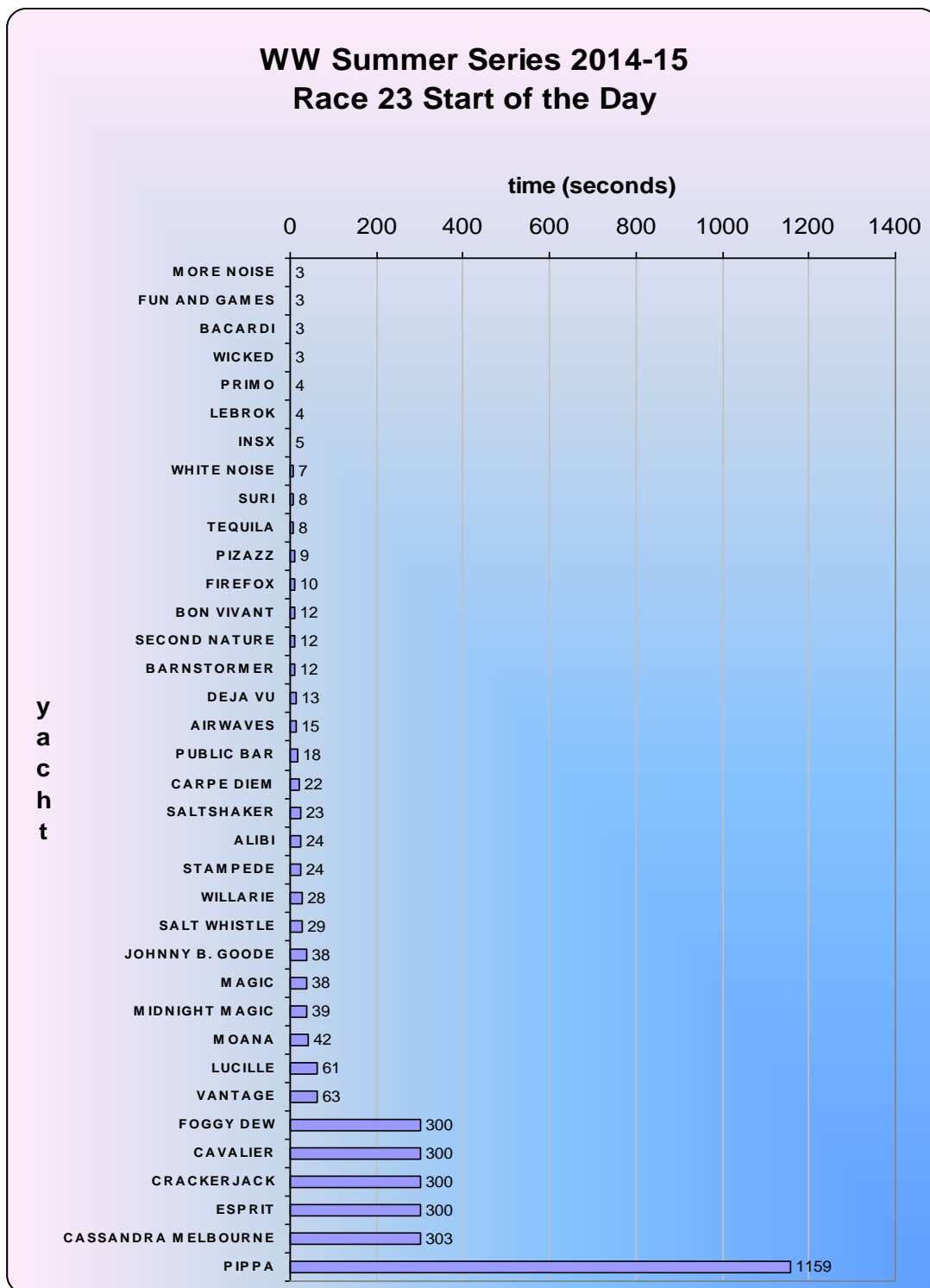
Crossing the line in 2nd place after sailing the course in the shortest time of the race was STAMPEDE (Christopher Gendala). STAMPEDE has completed 17 races this series and amassed 8 top ten and 3 podium finishes. She was 24 seconds late for her 56 minute start from second last place but made steady progress along the shortened course. STAMPEDE sailed the course in 1:57:40 - the only yacht to sail the course in less than 2 hours - and crossed the finish line at 16:23:40. This helped lift STAMPEDE from 16th to 8th place in the aggregate.



After leading the fleet for most of the race it was the J24 CRACKERJACK (Doug MacGregor) that was 3rd across the finish line. She didn't have the best of starts crossing the line too early for a 28-minute handicap in 18th place. CRACKERJACK sailed a good race only being overtaken on the last leg of the race in a variable breeze. She sailed the course in 2:30:41 to cross the line at 16:28:41. On this occasion the 5 minute penalty for the early start didn't cost her a place. This was the first race of the series for CRACKERJACK sailing as a visitor.

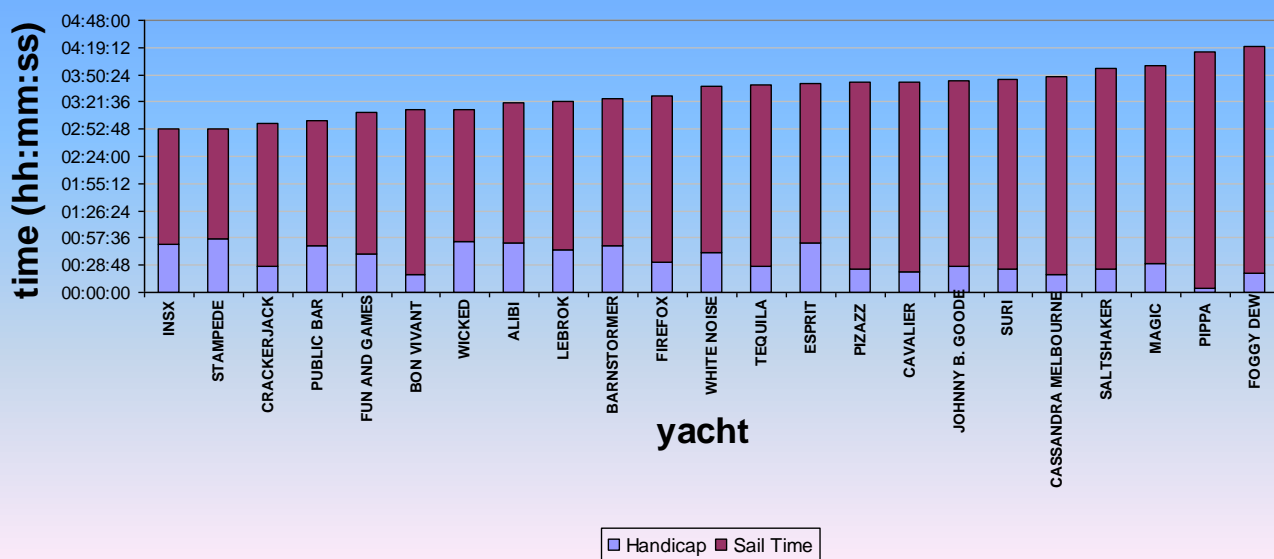
It was very polite for Crackerjack to wait for such a long time at the finish line for the other much bigger yachts to catch up. As a visitor the skipper may not know that it is not necessary to be quite that considerate of other yachts. MW

All 36 yachts did get a start, some better than others. Four yachts had the best started each 3 seconds late for their respective handicaps. MORE NOISE (Jason Close), FUN & GAMES (Alan EDWARDS), BACARDI (Martin Power) and WICKED (Mike Welsh). The median start was 18 seconds with 12 yachts starting within 10 seconds of their handicap.



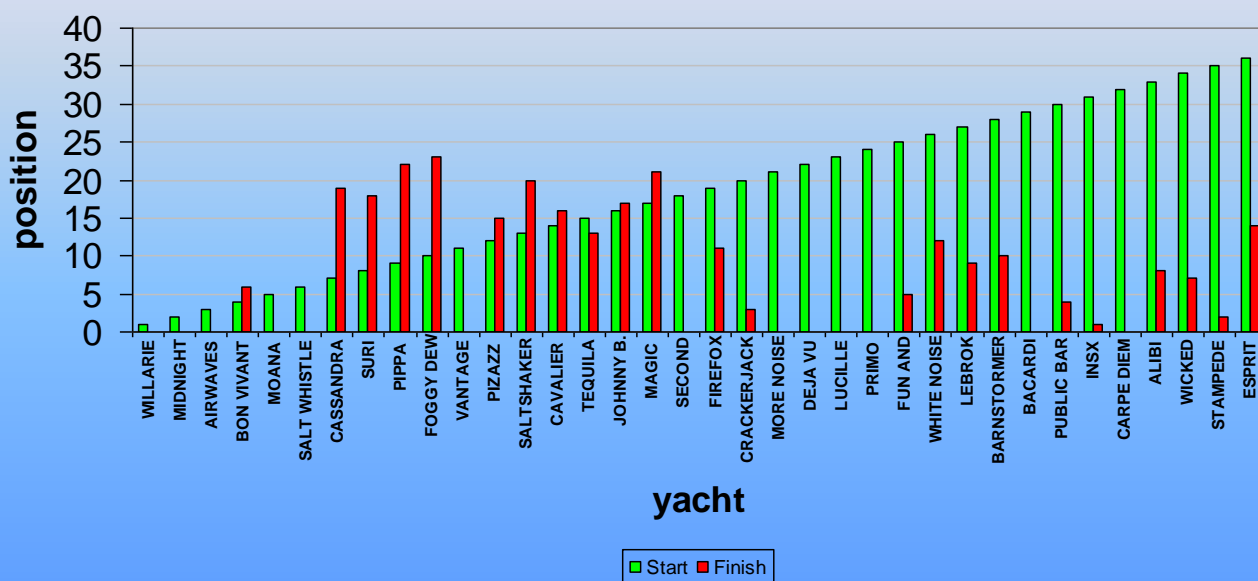
The closest finish of the race was the 10 seconds that separated INSX from STAMPEDE. There were 3 instances where yachts were separated by more than 9 minutes at the finish line. PUBLIC BAR (Clive Sondheim) finished 9 minutes 10 seconds ahead of FUN & GAMES; FIREFOX (Kim Beveridge Howard) finished 9 minutes 16 seconds ahead of WHITE NOISE (Daniel Andrews); the same margin separated CASSANDRA of MELBOURNE (Bob Reeves) from SALTSHAKER (Ken Gayler) whilst 14 minutes 3 seconds separated MAGIC (Phil Spry Bailey) from PIPPA (Jeffrey Woolhouse).

WW Summer Series 2014-15 Race 23 Results



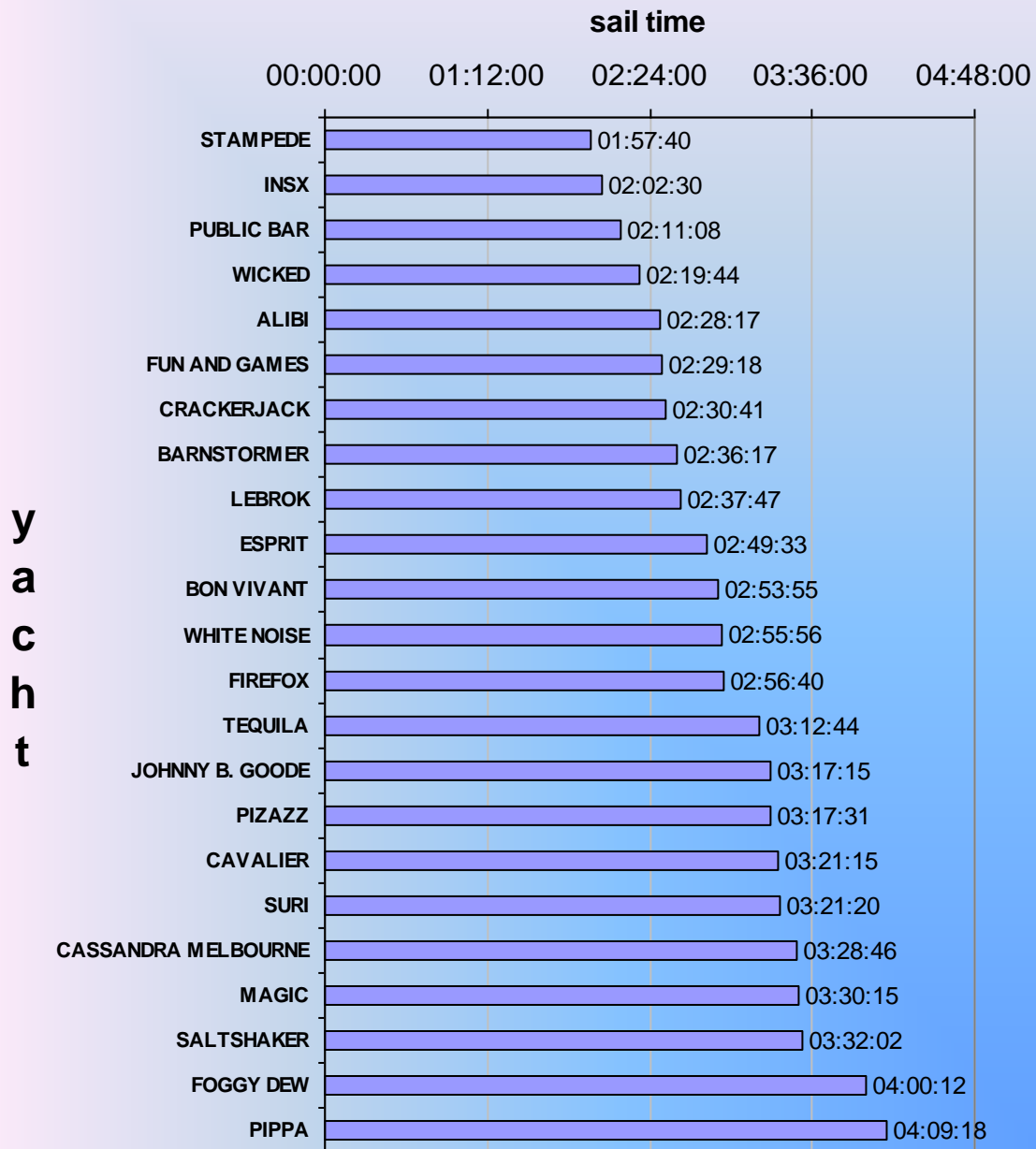
Of the first 12 yachts to start the race only 6 finished and only one finished in the first twelve across the line. Of the second twelve yachts to start only 7 finished and again only one finished in the first twelve. Only one of the last twelve yachts to start failed to finish with 8 of the late starters amongst the first ten to finish.

WW Summer Series 2014-15 Race 23 Position at Start & Finish



The average time to sail the shortest course in the Sailing Instructions was one of the longest in the series. Only STAMPEDE sailed the course in less than 2 hours, 12 yachts took between 2 and 3 hours to complete the course, 8 yachts took between 3 and 4 hours with 2 yachts taking more than 4 hours. The average time was 2:57:24.

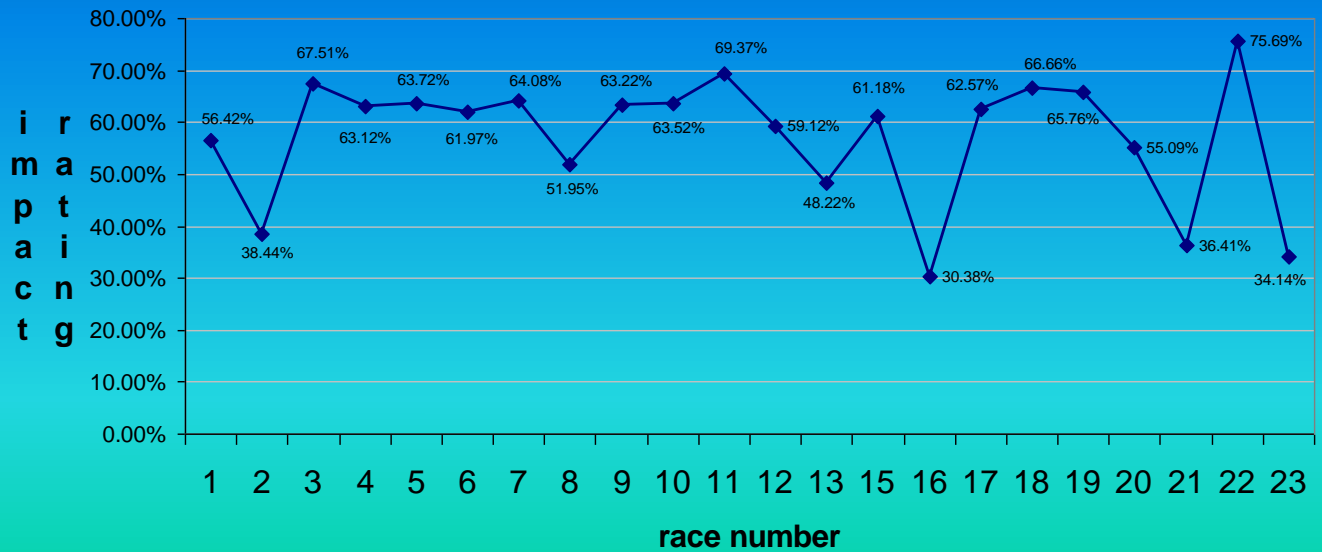
WW Summer Series 2014-15 Race 23 Sail Time



Throughout this summer series a new Handicappers Impact Rating System (HIRS) has been in operation. In keeping with the WW yacht handicaps it should not be taken too seriously. How it operates is surrounded by mystery and intrigue except to say that is delivered by the computer.

The system is objective and does not use sacrifices, incantations or any sort of spiritualism in its derivation. With only one race remaining the HIR for this series is 57.21% (Target 100%). The following graph shows the HIR for each race in the series.

WW Summer Series 2014-15 Handicappers Impact Rating



It is interesting to note that the handicapper's impact on races 2, 16, 21 and 23 was well below average. Three of these four races were shortened. On the other hand the handicapper had most impact (75.69%) on the outcome of race 22. Nevertheless, the target 100% does seem a distant aspiration.

Windward Buoy

WINDWARD WAFFLE

Time Limits: Just a reminder of time limits to save you asking the tower.

As per sailing instructions:

22. TIME LIMIT The time limit for races will be as set out in the following table. If one boat finishes within the specified time limit, it will be extended by the amount specified.

Boats that do not finish within the time limit, or the extended time limit if applicable, will be scored DNF. This changes RRS 35.

Time limits for other races will be notified in the relevant NORs

Race Type	Time Limit	Extension
Day races during Daylight Savings Time	17 30 hrs.	45 minutes
Day races during Australian Eastern Standard Time	16 30 hrs.	30 minutes
Twilight Series	Earlier of sunset or 20 00 hrs	Nil
Sunday Sailors	12 30 hrs	Nil

At the expiry of the time limit, the Race Officer may advise on the working VHF Channel that no boat in a division has finished within the time limit.

BARBIE Brendon has a replacement for Wavelength, a 40ft Hanse. It should be arriving from Eden by the time you read this. Brendon is believed to have gone out and purchased a few Barbie Dolls to match the name of his new yacht called **BABY DOLL**. Perhaps the B Kruger is really Barbie Kruger?

Forzado is still looking for a buyer. Bruce wants to make it clear that it is still for sale. See Sundance [Click](#)

RECOMMENDATIONS FROM RACE 23 - MARK WINDWARD

When there is no wind do not start a race.

Why are the starts of Wednesday Wonders races not delayed when there is NO wind?

Recommendation:

When there is less than 5 knts at Fawkner Beacon the race should be delayed 30 or 60 mins. If the wind does Knot arrive there is simply no race. If the wind does come in, a delayed start would give some chance for the handicaps to even out the racing.

Start Wednesday Wonders at 14:00 for Summer races.

If you have read Windward Buoy's stats you will be aware that the breeze increases from 13:30 to 14:00. I think in only 2 races this summer it has slightly decreased. How can handicaps work with this variation affecting results? For the first part of this season this was very evident. The data for the current series suggests that the average wind speed is about 3 knots (20%) less than the previous series.

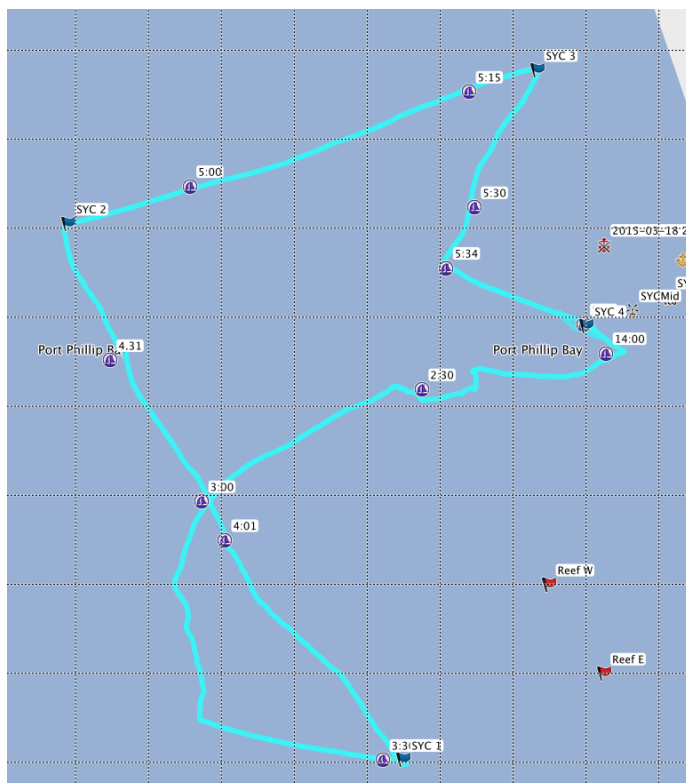
Short Courses.

A suggestion has been made to Mark that with about 30% of yachts (10 out of 36 starters) withdrawing from Race 23, an achievable target to finish should be set in similar conditions, to encourage yachts to complete the race.

What should be set is a course e.g. Start -1 - 3 - finish (3.3nm).

The map below is how the time panned out for one yacht that finished the race albeit second last, at 17:44:18 and the last yacht crossed the line at 17:50:45.

It should be noted that the wind in the last throes of the race did increase.



Presentation for race 23 Due to the very late finishing the handicapper had to leave the club while the tower management were still taking down finishing times. So the presentation for race

23 will be held at the conclusion of Race 24 and the finish of the Summer series.

Answer to Race 21 Question

Dennis Hambleton may be a bit older than I thought, or he is well informed about types of yachts. Dennis' responses are 100% correct. (Manufacturer's names added)

1 Triton

Triton Boat Company, Sydney - 4 at SYC

2 Cavalier 26 (used to be one on F row)

Cavalier Yachts Bankstown NSW

3 Endeavour 24 (has several siblings)

Endeavour Yachts, Hurstville NSW

4 Blue Bird 22

Formit Fiberglass, Sydney. Mark's first experience in a keelboat was on a BB

5 Hood 23 (mostly Sydney based)

Hood Boat Company Sydney

6 Columbia 27 (lots up the bay at St Kilda)

International Marina, Melbourne

7 Folk Boat (haven't seen one for years)

Dulminson Marine, Wyong NSW - Hull, Swedish Designed

8 Top Hat 25 (ditto)

Form-It Fiberglass Warriewood NSW

9 Waarschipp 23 (there is a bigger Waarschip on B row)

Anchove Marine, Sandringham

10 Contessa 25

East Coast Yachts, Gosford

11 East Coast 31 (Bernie?)

Bruce Fairlie, Gosford, NSW

12 Red Jacket 17

(It helped to grow up in Perth where there were lots of these, also its Red Witch sibling)

Ken & Dale Cameron Yachts, Nedlands. WA

What ever happened to locally built yachts?

Question 23 Summer: What Schooner is this?

I have a city in Victoria named after me.

I was skippered by a Cornishman born at Millbrook Cornwall who served in the Royal Navy in 1812.

I was built in Devon and was designed to be fast as I was carrying fruit from the Mediterranean to London.

I was sold in 1834 to a Baron who redesigned my interior for use as a cruising yacht.

A main Melbourne street carries his name.

My name derived from Norwegian and Latin and a connection to the New Hebrides.

I was sold in 1841 and used as a trading vessel and frequently visited Port Phillip and usually just moored off the shore.

In 1842 I sailed for Canton and a log of this voyage is in the National library.

I was sold in 1843 from Sydney and was wrecked in Tahiti (date unknown).

I did have a Sculpture of me on a Melbourne beach display for a while until it was said to be too dangerous.



Some races need a touch of Magic to get your yacht to the start line and back into the marina. Pippa without a prop needed some Magic to assist her. The Pippa Skipper thanks both Midnight Magic and Magic for their help. A new prop has been fitted and ready for next Wednesday.



Enjoy your last Summer 2015 race,
Race 24 is
Your last chance to win the series,
Last chance to win The Century Class
Last chance to make the top ten
The last time you can improve your result to finish in front of those 2 or 3 other yachts you like to beat.
Or just the last chance to improve your series score.

We would welcome any stories about the season, or races, or answers to the question for this race....or any other comments. Thanks to Windward Buoy, Dennis, Colin X2 and a few other anonemouse sailors.

[Mark Windward](#)

Website for this week: [Click](#) to find out what songs were being played when you were born.

Definitions that you may be unaware of

Willy-nilly: adj. Impotent

Testicle: n. A humorous question on an exam

Negligent: adj. Absentmindedly answering the door when wearing only a nightgown.