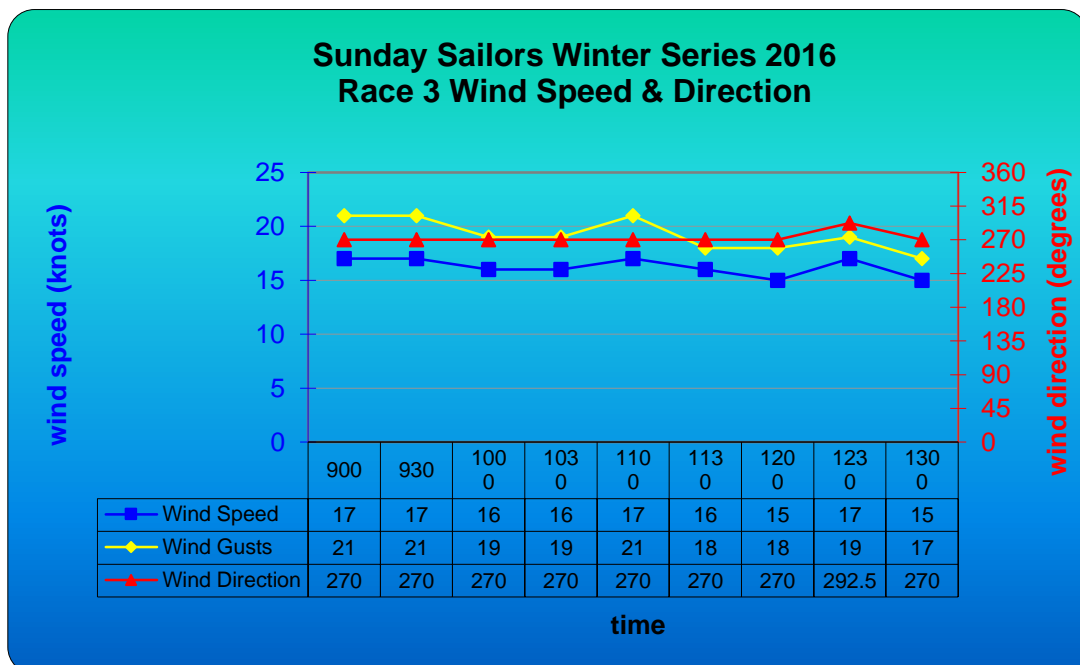


Early Starters Hard to Catch



Although the course and the number of yachts were the same, the breeze was stronger and from a different direction than that experienced in race 2. This resulted in the fleet sailing the course in an average time almost 22 minutes faster than race 2 and also brought three different yachts to the podium. All three podium finishers had handicaps of a minute or less and were among the first 5 yachts to start the race. It was a tough race for the yachts with higher handicaps. Although all finished the race, none of them were among the first third of the fleet to finish.

The winner was the Mull 31, SILVERADO (John Barbieri) sailing in her first race of the winter series. The Beneteau 50 CARPE DIEM (Paul Commins) sailed the 7 leg, 10.8 nautical mile course 8 in the shortest time of 1:23:08. This was 6 minutes 58 seconds faster than the best time recorded in race 2. Only one yacht took more than 2 hours to sail the course. Recording the best Start of the Day was the Beneteau 45 DEBONNAIRE (Phil Gomez) who was only 4 seconds late for her 43 minute handicap. Overall, yachts didn't have the best possible start with 8 of the 22 starters more than a minute late for their respective handicaps.



It was a steady westerly that drove the fleet around the course with observations from Fawkner Beacon averaging 16 knots for the morning.



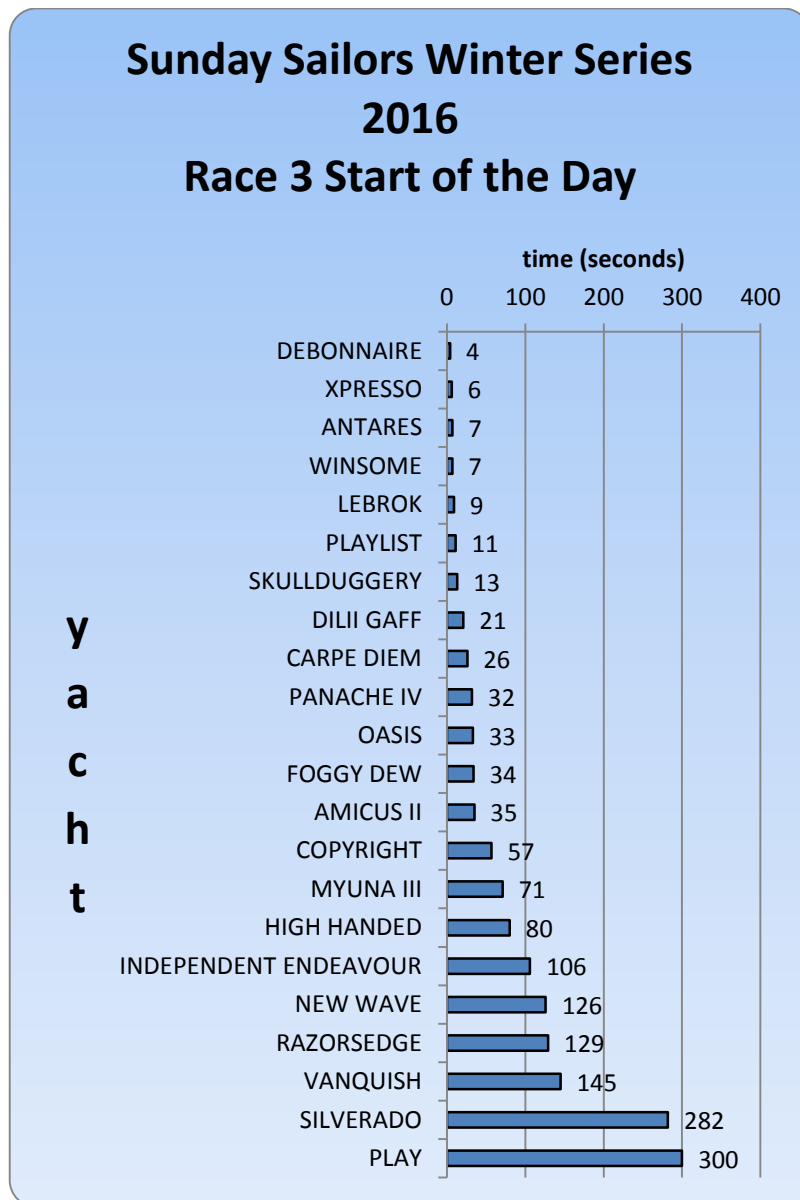
SILVERADO completed 9 races in the summer series with a handicap of between 18 and 20 minutes and finished 10th in the aggregate. She started this series from 5th place 4 minutes 42 seconds late for a 1 minute handicap. By the time SILVERADO was rounding number 4 for the first time she was in the lead. A position she held for the rest of the race. She sailed the course in 1:44:52 and crossed the finish line at 11:15:52. This puts SILVERADO at the top of the aggregate in a tie with PLAY (Iain Pridgeon).

The extra breeze gave the S&S 34 VANQUISH (Bob Beresford) a reversal in fortunes in this race. In race 2 she finished last but crossed the line in 2nd place in race 3. Like SILVERADO, VANQUISH had a 1 minute handicap which she didn't use to best advantage starting 2 minutes 24 seconds late from 4th place. By the time she rounded number 6 VANQUISH led the fleet but relinquished the lead in the following leg. VANQUISH sailed the course in 1:48:20 crossing the finish line at 11:19:20 – 3 minutes 28 seconds behind SILVERADO. VANQUISH is tied for 2nd place in the aggregate.



The Salar 40 PANACHE IV (Egils E Stokans) was the first yacht to start this race. Being 32 seconds late for a 0 handicap wasn't her best start. Nevertheless, she sailed the course very well holding off all but 2 yachts in the fleet. PANACHE IV sailed the course in 1:54:12 and crossed the finish line 4 minutes 52 seconds behind VANQUISH at 11:24:12 in 3rd place. PANACHE IV has sailed both races in the series and is currently placed 5th in the aggregate.

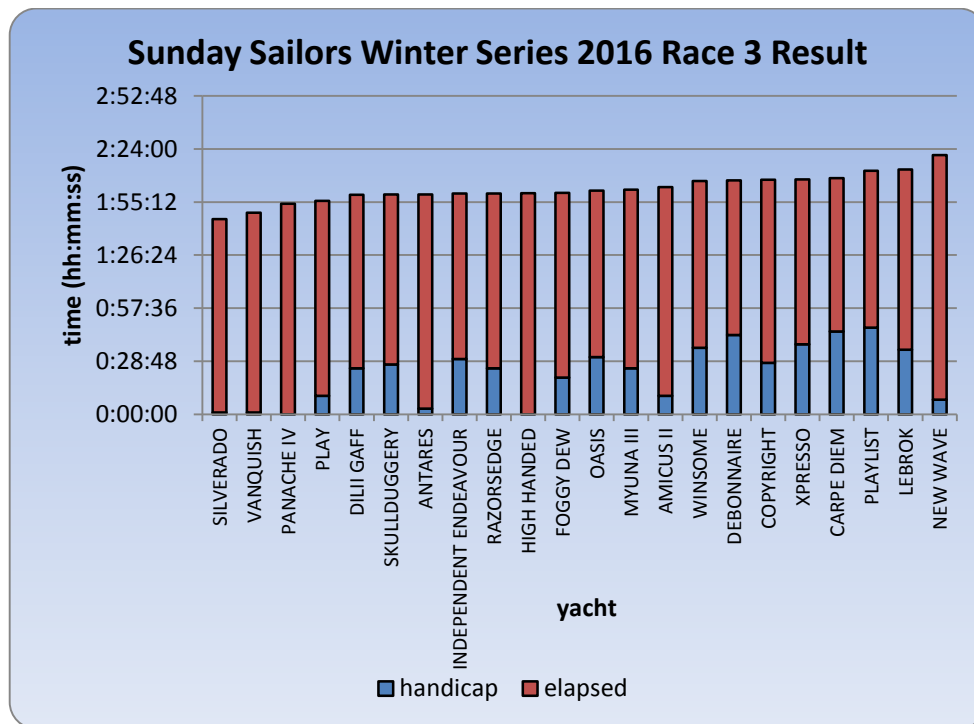
As mentioned earlier DEBONNAIRE won Start of the Day 4 seconds late for handicap with XPRESSO (Ari Abrahams) with next best start. If the median start time of 33 seconds is any guide then it is necessary to return to race 8 of the previous series to find a slower one. The start was particularly costly for PLAY who crossed the line too early and the subsequent 5 minute penalty cost her a podium finish.



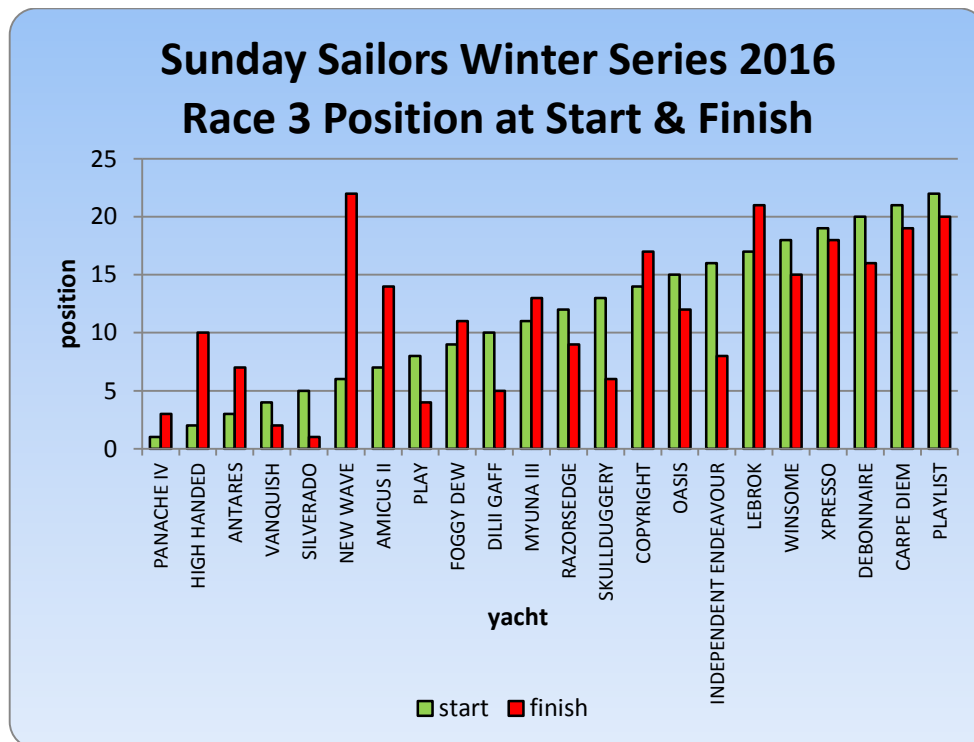
y
a
c
h
t

At about the half way stage of the race the fleet was in a long thin line reaching from number 7, around number 6 and on the way to number 5. The yachts had started 46 minutes 39 seconds apart and finished 34 minutes 55 seconds apart. Only 4 yachts finished within 10 minutes of the winner. There was a tussle for both 6th and 8th places. SKULLDUGGERY (Garry McCarten) crossed the line in 6th place 1 second ahead of ANTARES (G Stewart & D Pearce) whilst the same margin separated

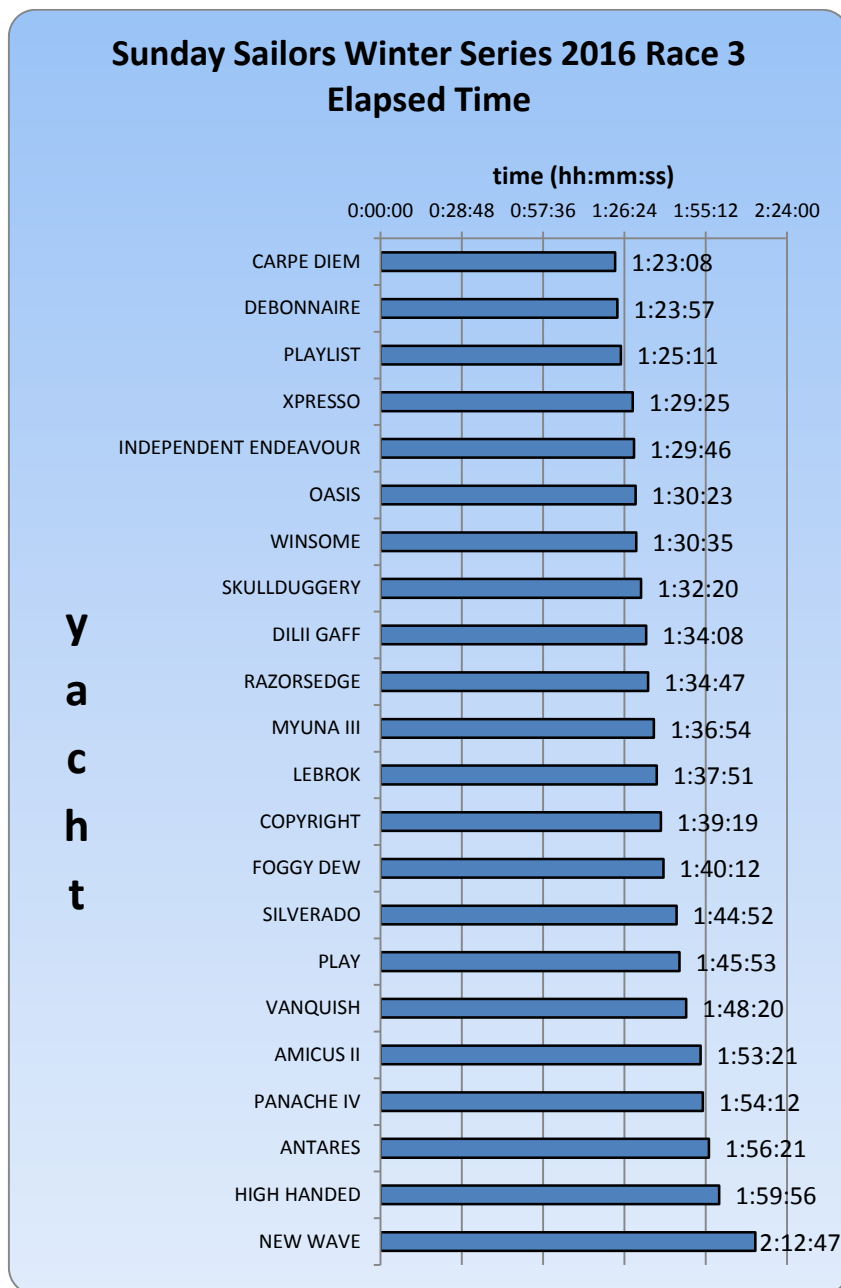
INDEPENDENT ENDEAVOUR (Malcolm Mohr) from RAZORSEGE (Simon Lipman) who finished 8th and 9th respectively.



INDEPENDENT ENDEAVOUR had a good race finishing 8 places better than her start position whilst NEW WAVE found herself losing 16 places during the race.

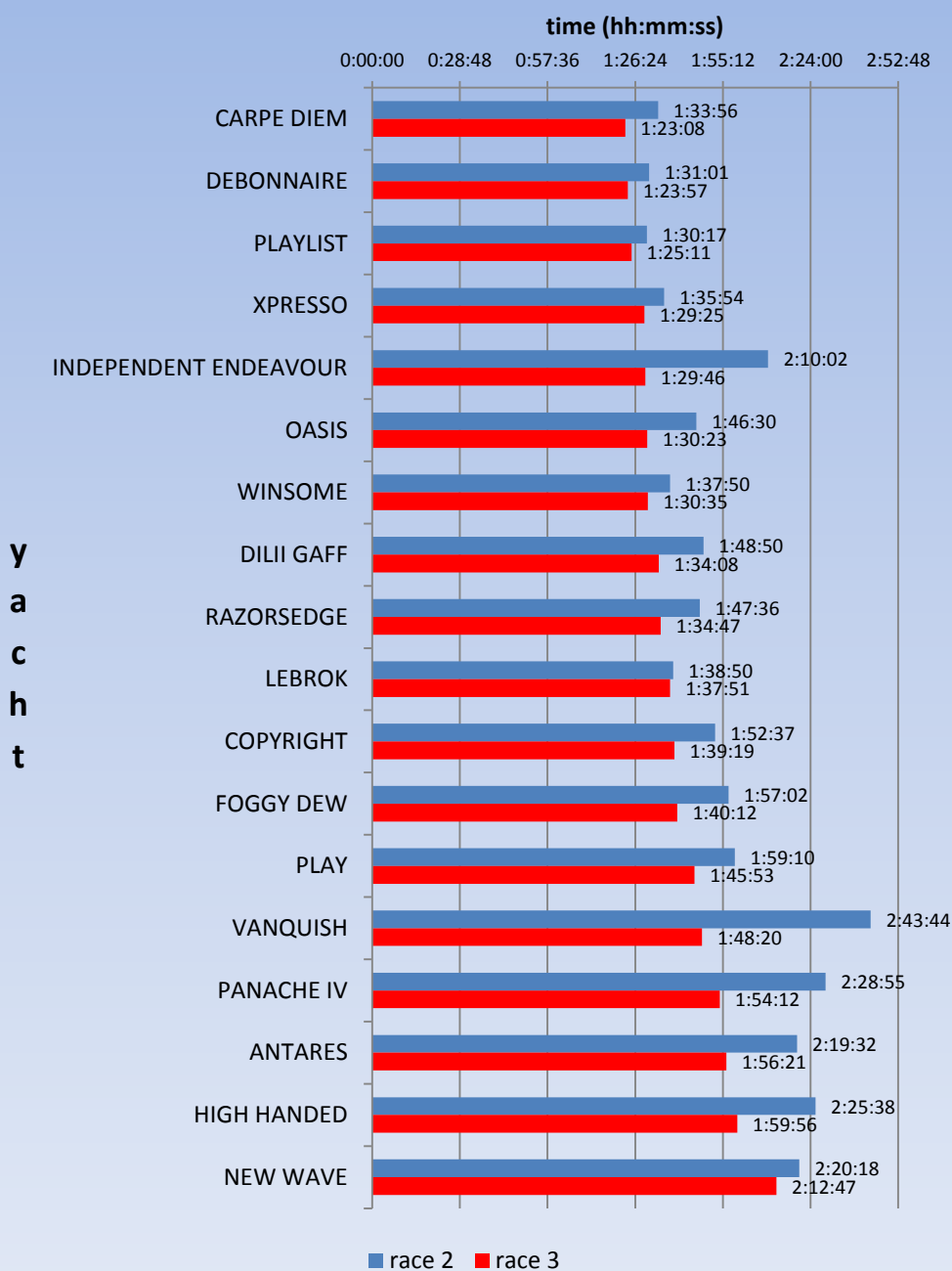


Despite this being a long course it was a comparatively short race with all but one yacht completing the race in less than 2 hours. Thirteen yachts sailed the course faster than the average elapsed time of 1:40:10



With both races 2 and 3 sailing course 8 it is interesting to compare the elapsed time of yachts that completed both races. These elapsed times are shown on the chart over the page.

Sunday Sailors Winter Series 2016 Elapsed Time Races 2 & 3



y
a
c
h
t

Due to the Public Holiday there is a 3 week break between races with Sunday Sailors Race 4 scheduled for 19th June 2016.

