

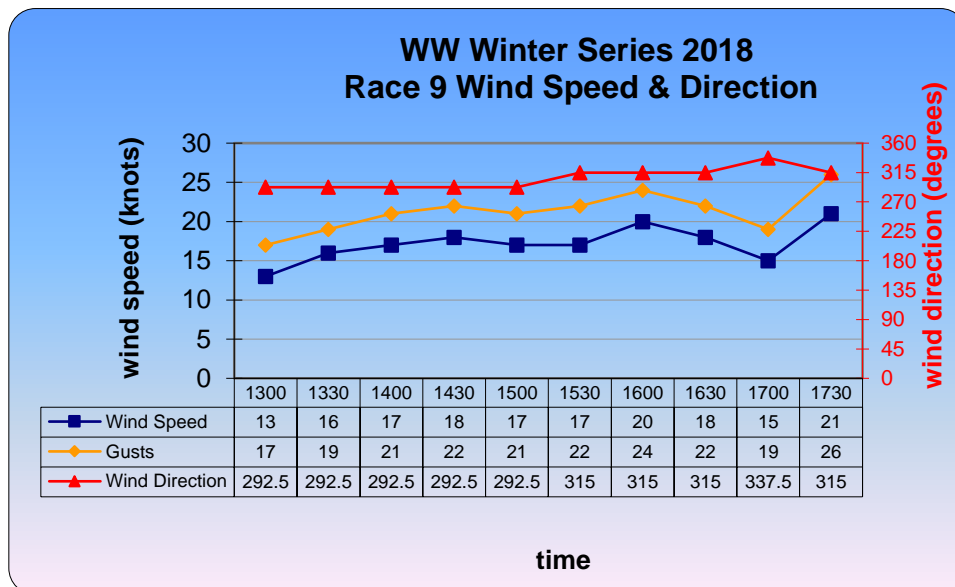
A Hint of Déjà Vu

WW Winter Series 2018 Race 9

(30 May 2018)



Both races 8 and 9 were around the same 10.1 nautical mile course 28 but conditions were quite different. The breeze averaged around 17 knots for race 9 rather than the 12 knots experienced in race 8 and came from about 45 degrees further north. The stronger breeze produced a race with the fastest elapsed time of the series. However, the late starters again found it difficult to catch the early yachts. None of the late starters were among the first third of the 37 fleet to finish.



For the second successive week UPBEAT (Peter Dunne) won Start of the Day with yet another perfect start. This time he shared the honour with SUMMER WIND (Martyn Sly) who also had a perfect start. Becoming the 8th different yacht to win a race this series was FOGGY DEW (Frank Hilliard). Recording her second podium finish in successive races was SUMMER WIND. She finished in 2nd place 1 minute 49 seconds after the winner. In third place was the summer series aggregate winner WHITE POINTER (Tom Raft). This was her first podium finish of the winter series. Relishing the stronger breeze was STAMPEDE (Christopher Gendala) who sailed the course in the fastest elapsed time of 1:23:28. This was 10 minutes 30 seconds faster than she sailed the same course in race 8.

After sailing into top spot in the aggregate last week PIPPA (Jeffrey Woolhouse) finished 9th this week holds on to top position. Second in the aggregate is SALTSHAKER (Ken Gayler) who finished in 32nd place. However, both these top two yachts are the only yachts to have accumulated 5 top ten finishes in the series. Third in the aggregate for the 3rd successive week is the Armitage 30 PHOENIX (Alex Tseberg).



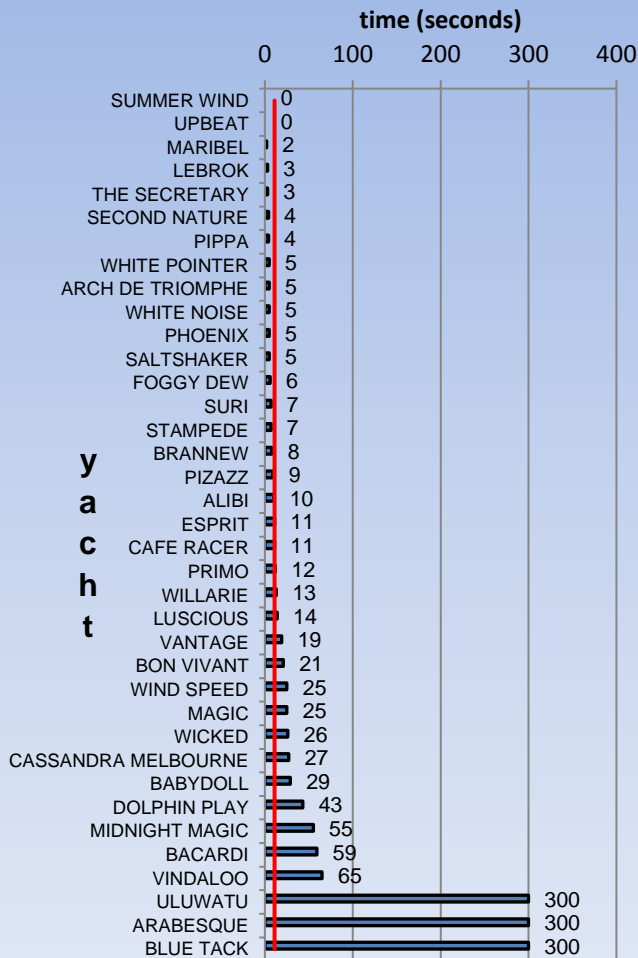
This was the 5th race completed by FOGGY DEW this series. Her first 3 races saw her finish 39th, 42nd and 44th. Her handicap was reduced and her last 2 races have yielded 2 podium finishes. She had a good start to this race only 6 seconds late for her 15 minute handicap from 5th place. On completion of the first 4 legs FOGGY DEW had moved into 2nd place still well behind the race leader. She completed the final 4 legs of the course in 45 minutes 57 seconds and established a healthy lead. FOGGY DEW had sailed the entire course in 1:50:27 and was first across the finish line at 15:35:27. The Bavaria 32 sailed the course faster than the Oceanis 34 PIZAZZ (P. Martyn & R.Kemp) and only 1 minute 3 seconds slower than the other Oceanis 34 SURI (Rick Blanck). Despite her win FOGGY DEW moves up only 2 places in the aggregate to be 40th.

In contrast the 2nd yacht across the finish line SUMMER WIND moved 11 places up the aggregate table from 22nd to 11th place. SUMMER WIND started exactly on her 24 minute handicap from 12th place. She had the same handicap as LUSCIOUS (Michael Butler) but started 14 seconds ahead. Rounding number 4 for the first time she had a lead over LUSCIOUS of 5 places and 4 minutes 32 seconds. By the time SUMMER WIND crossed the finish line she had established a lead of 6 minutes 39 seconds over LUSCIOUS who finished 8 places behind. SUMMER WIND sailed the course in 1:43:16 and crossed the finish line at 15:43:35. She has completed 7 of the 9 races in the series and after a slow start has accumulated three top ten places which includes 2 podium finishes.



Despite an increasing handicap – from 32 to 37 minutes, WHITE POINTER has recorded 3 top ten finishes in her 9 completed races. She seems to perform better in the stronger breezes and about 15 knots or more of breeze brings out her best. WHITE POINTER was only 5 seconds late for her 37 minute handicap when she started from 21st place. She sailed the first 4 legs of the course in 51 minutes 53 seconds by which time she was in 14th place. The last 4 legs of the course were completed in 40 minutes 45 seconds and WHITE POINTER crossed the finish line at 15:39:43 – 2 minutes 27 seconds behind SUMMER WIND. WHITE POINTER had the 5th fastest elapsed time of the race. She started 55 seconds and 75 seconds ahead of UPBEAT and PRIMO (Steve Copley) respectively. By the finish line the gap had widened to 6 minutes 7 seconds and 11 minutes 9 seconds. WHITE POINTER moved from 11th to be 4th in the aggregate.

WW Winter Series 2018 Race 9 Start of the Day



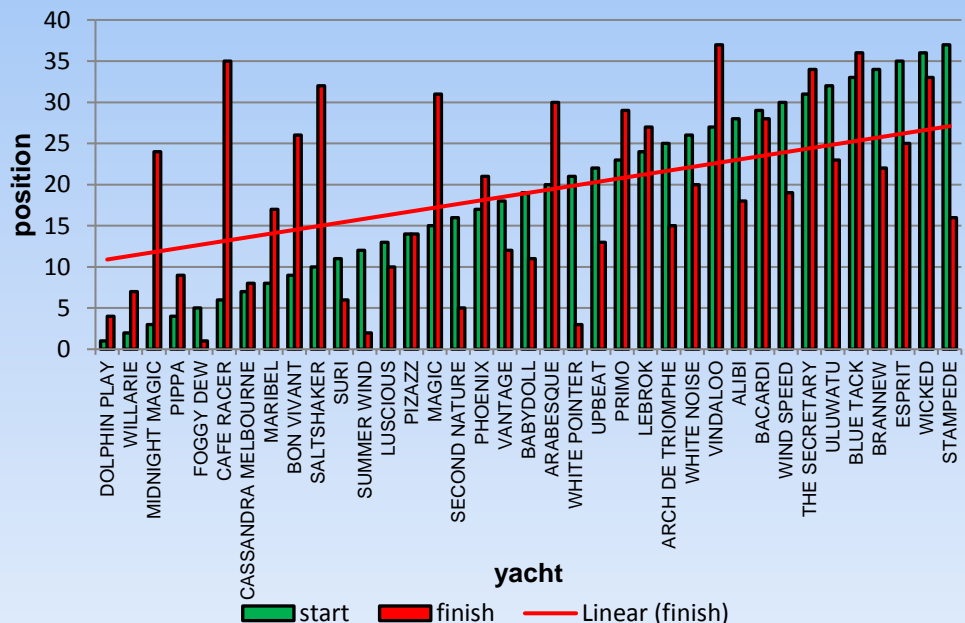
The median start time for the race was 11 seconds with 12 yachts recording starts of 5 seconds or less. Three yachts started too soon and in a tightly packed finish this proved costly. Each of the three yachts probably finished 12 or more places lower than what they could have.

The search for the coveted Misty Blue Trophy has begun in earnest. If past series are any guide then a consistent start time of 5 seconds or less is needed to win the trophy. The yachts in the hunt at this stage of the series are shown in the table below. There is still a long way to go.

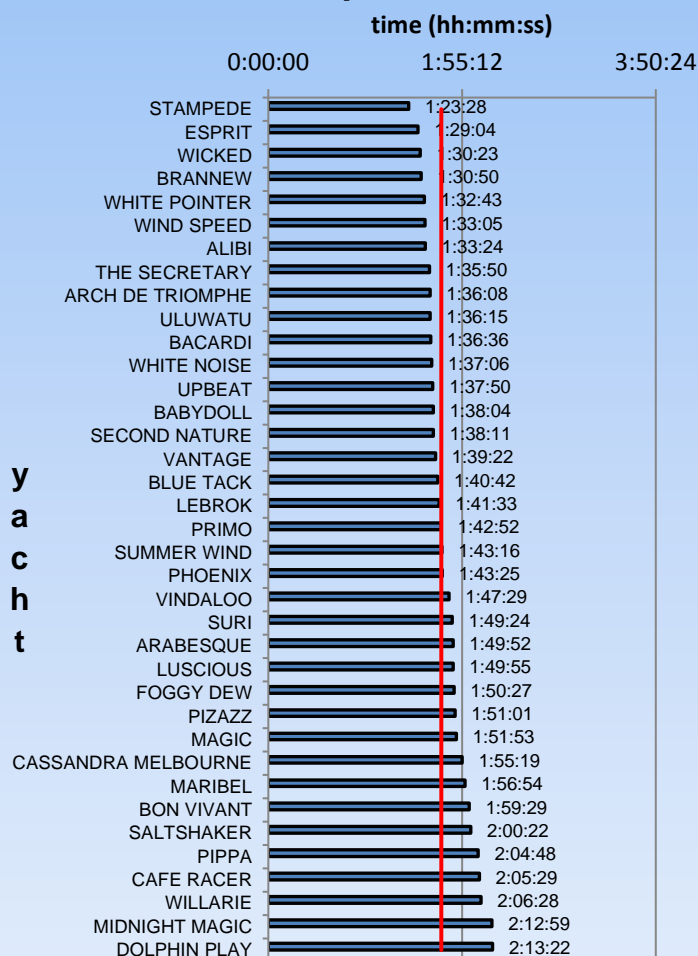
Number of Times the Start is Less than 5 Seconds	
YACHT	Number
WICKED	6
LEBROK	5
WHITE NOISE	5
UPBEAT	5
ARCH DE TRIOMPHE	4
SUMMER WIND	4
SALTSHAKER	4

As mentioned earlier it proved difficult for the late starters to move into the top third of the fleet at the finish. Of the first 12 yachts to cross the finish line 7 were early starters and 5 started from mid fleet.

WW Winter Series 2018 Race 9 Position at Start & Finish



WW Winter Series 2018 Race 9 Elapsed Time



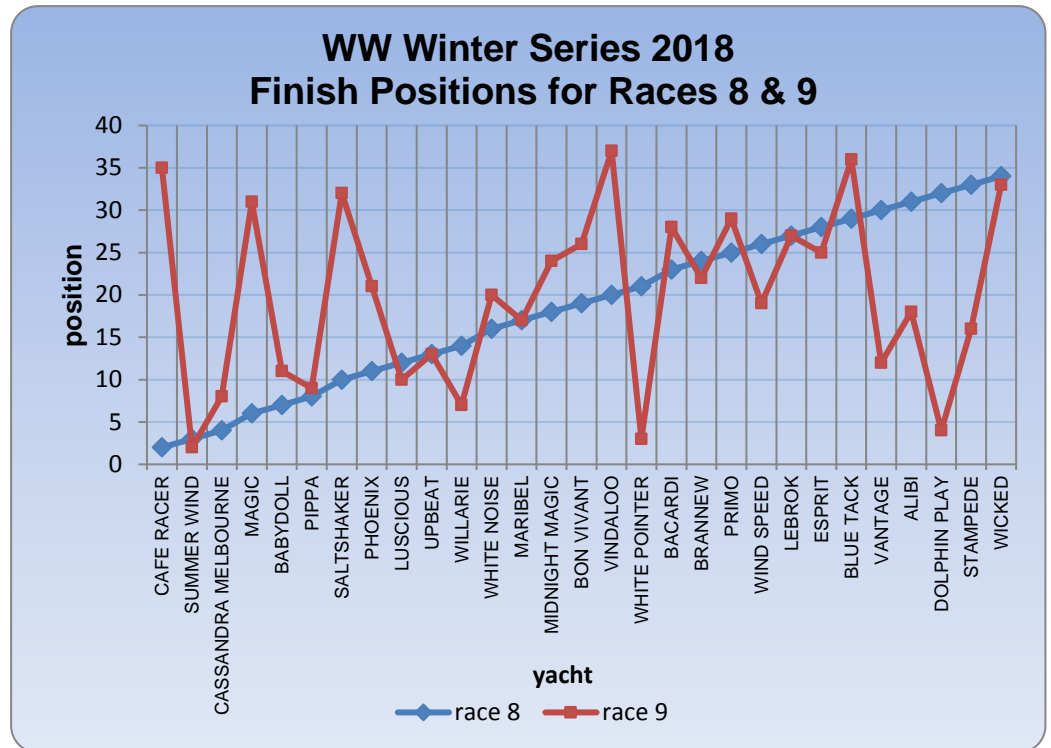
The average elapsed time for the race was 1:45:33 – the fastest of the series. For the 3rd time this series STAMPEDE recorded the fastest elapsed time - 5 minutes 36 seconds faster than her closest rival. The range of elapsed times was 49 minutes 54 seconds – the second lowest of the series.

Race 9 included the second race in the Century Class Winter Series. Ten yachts were in the race won by DOLPHIN PLAY (John Brennan). She finished 1 minute 54 seconds ahead of WILLARIE (Graeme Kaufman) in 2nd place with CASSANDRA of MELBOURNE (Bob Reeves) finishing 3rd. The full result is shown in the table below.

Century Class Winter 2018 Race 2 Result						
POSITION	YACHT	DESIGN	SKIPPER	ELAPSED	FINISH	HANDICAP
1	DOLPHIN PLAY	Triton 24	John Brennan	2:13:22	15:40:22	-3
2	WILLARIE	Triton 24	Graeme Kaufman	2:06:28	15:42:28	6
3	CASSANDRA MELBOURNE	Mottle 33	Bob Reeves	1:55:19	15:43:19	18
4	PIPPA	Triton 24	Jeffrey Woolhouse	2:04:48	15:43:48	9
5	MIDNIGHT MAGIC	East Coast 31	Bernadette Moore	2:12:59	15:49:59	7
6	BON VIVANT	S80	Russell Keays	1:59:29	15:50:29	21
7	ARABESQUE	Farr 1020	Milton Green	1:49:52	15:51:52	32
8	MAGIC	S & S 39	Phil Spry-Bailey	1:51:53	15:51:53	30
9	SALTSHAKER	Jarkan 925	Ken Gayler	2:00:22	15:52:22	22
10	THE SECRETARY	J44	George Shaw	1:35:50	15:52:50	47

By The Way

Twenty nine yachts sailed in both races 8 and 9. Of the 29, 3 yachts recorded the same result, 12 did better in race 9 whilst 14 had a worse result. The differences in the finish positions of the 29 yachts in the two races are shown in the chart on the right.



(Left) Sibling rivalry? UPBEAT & PRIMO, both Beneteau 367's.

(Right) PIPPA leads the aggregate for the second successive week.





(Left) There's something very French about Arch de Triomphe.

(Below) Dolphin spotting in the bay?



(Below) The handicapper made quite a splash this week. SECOND NATURE finished 5th.



(Right) The Cafe might be closed Wednesday afternoons but the racing still goes ahead.





(Left)The camera may have image stabilisation but there's something wrong with the tilt correction. Even BABYDOLL (below) has a bit of a lean on.



(Below) BON VIVANT found a few "pot holes in the road".

(Below) SECOND NATURE caught SURI.

They finished 5th and 6th respectively.



PHOTOS:

Bruce Parry



The concept of Wednesday Wonders has been recently included in the Saturday Round the Stix Winter Series. There is now a Non-spinnaker Division for those wanting to race on Saturdays. Although there are differences between Wednesday and Saturday races the courses are likely to be familiar to Wednesday Wonders regulars. There have already been 2 races and the next is scheduled for 16 Jun 2018 starting at 1330.